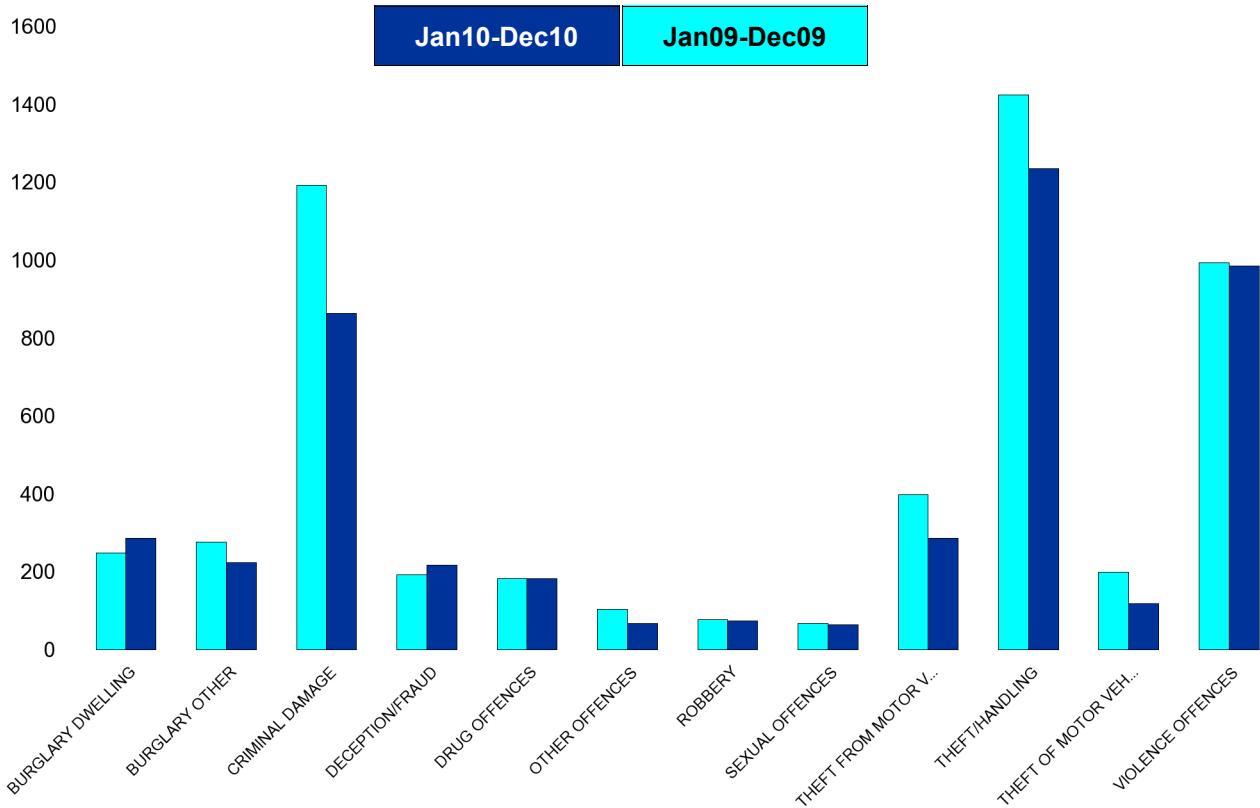


# Kettering Town Forum Report

## Kettering Town SCT - Crime

HO Group	No of Crimes (Jan10-Dec10)	No of Crimes (Jan09-Dec09)	+/- Crime	% Change	No of Cleared Up Crimes	Detection Rate (Past 12 Months)
BURGLARY DWELLING	286	248	38	15%	60	21%
BURGLARY OTHER	224	276	-52	-19%	31	14%
CRIMINAL DAMAGE	864	1193	-329	-28%	164	19%
DECEPTION/FRAUD	218	192	26	14%	61	28%
DRUG OFFENCES	182	182	0	0%	188	103%
OTHER OFFENCES	67	104	-37	-36%	64	96%
ROBBERY	74	77	-3	-4%	22	30%
SEXUAL OFFENCES	65	68	-3	-4%	34	52%
THEFT FROM MOTOR VEHICLES	287	398	-111	-28%	51	18%
THEFT/HANDLING	1235	1425	-190	-13%	472	38%
THEFT OF MOTOR VEHICLES	118	200	-82	-41%	32	27%
VIOLENCE OFFENCES	986	994	-8	-1%	442	45%
<b>Sum:</b>	<b>4606</b>	<b>5357</b>	<b>-751</b>	<b>-14%</b>	<b>1621</b>	<b>35%</b>

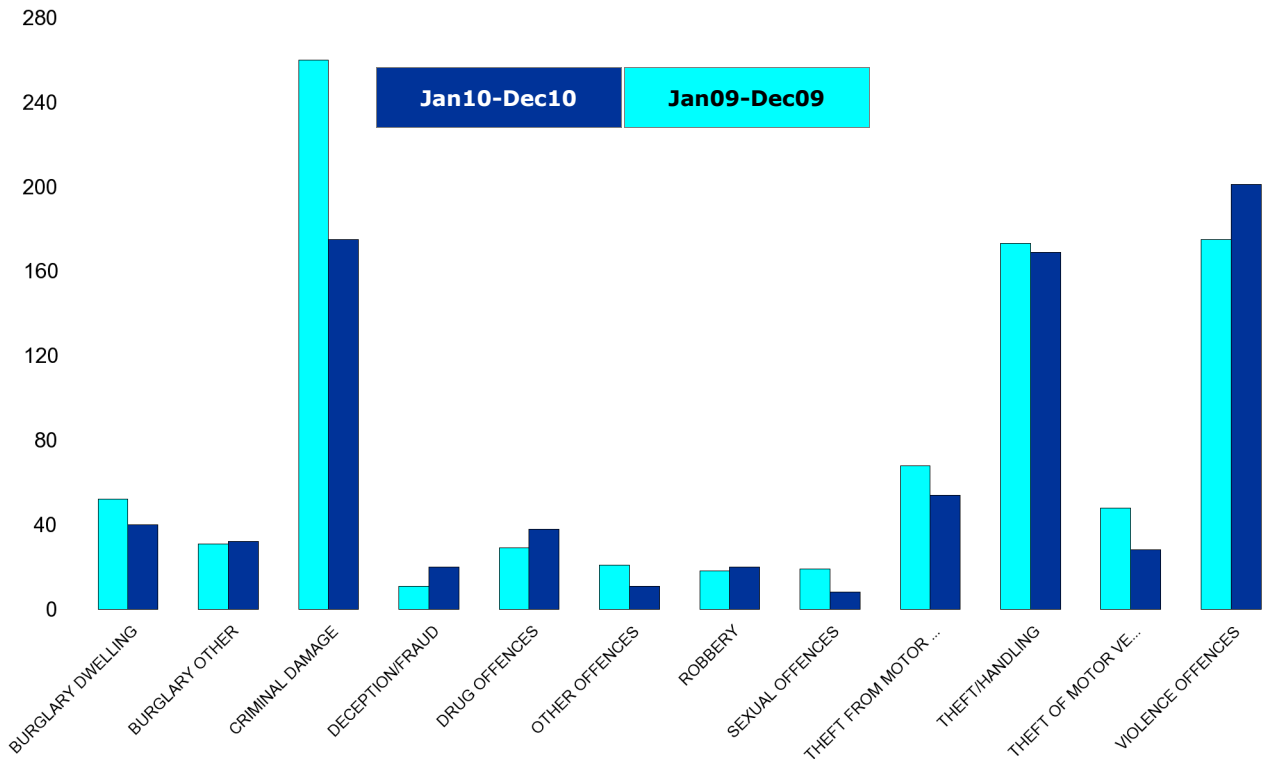


## Kettering Town Forum Report

### All Saints

HO Group	No of Crimes (Jan10-Dec10)	No of Crimes (Jan09-Dec09)	+/- Crime	% Change
BURGLARY DWELLING	40	52	-12	-23%
BURGLARY OTHER	32	31	1	3%
CRIMINAL DAMAGE	175	260	-85	-33%
DECEPTION/FRAUD	20	11	9	82%
DRUG OFFENCES	38	29	9	31%
OTHER OFFENCES	11	21	-10	-48%
ROBBERY	20	18	2	11%
SEXUAL OFFENCES	8	19	-11	-58%
THEFT FROM MOTOR VEHICLES	54	68	-14	-21%
THEFT/HANDLING	169	173	-4	-2%
THEFT OF MOTOR VEHICLES	28	48	-20	-42%
VIOLENCE OFFENCES	201	175	26	15%
<b>Sum:</b>	<b>796</b>	<b>905</b>	<b>-109</b>	<b>-12%</b>

No of Cleared Up Crimes	Detection Rate (Past 12 Months)
8	20%
4	13%
30	17%
3	15%
41	108%
13	118%
7	35%
1	13%
6	11%
56	33%
11	39%
92	46%
<b>272</b>	<b>34%</b>

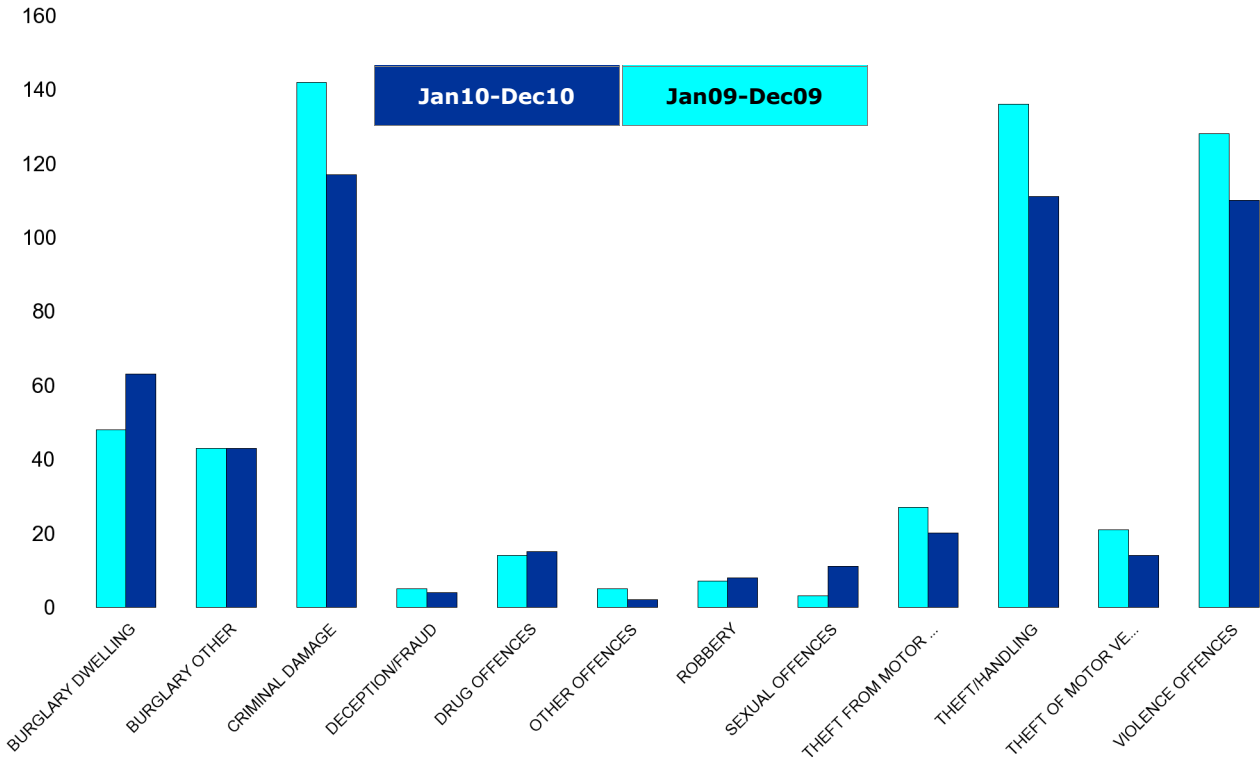


## Kettering Town Forum Report

### Avondale Grange

HO Group	No of Crimes (Jan10-Dec10)	No of Crimes (Jan09-Dec09)	+/- Crime	% Change
BURGLARY DWELLING	63	48	15	31%
BURGLARY OTHER	43	43	0	0%
CRIMINAL DAMAGE	117	142	-25	-18%
DECEPTION/FRAUD	4	5	-1	-20%
DRUG OFFENCES	15	14	1	7%
OTHER OFFENCES	2	5	-3	-60%
ROBBERY	8	7	1	14%
SEXUAL OFFENCES	11	3	8	267%
THEFT FROM MOTOR VEHICLES	20	27	-7	-26%
THEFT/HANDLING	111	136	-25	-18%
THEFT OF MOTOR VEHICLES	14	21	-7	-33%
VIOLENCE OFFENCES	110	128	-18	-14%
<b>Sum:</b>	<b>518</b>	<b>579</b>	<b>-61</b>	<b>-11%</b>

No of Cleared Up Crimes	Detection Rate (Past 12 Months)
15	24%
2	5%
20	17%
0	0%
17	113%
2	100%
3	38%
10	91%
3	15%
39	35%
6	43%
43	39%
<b>160</b>	<b>31%</b>

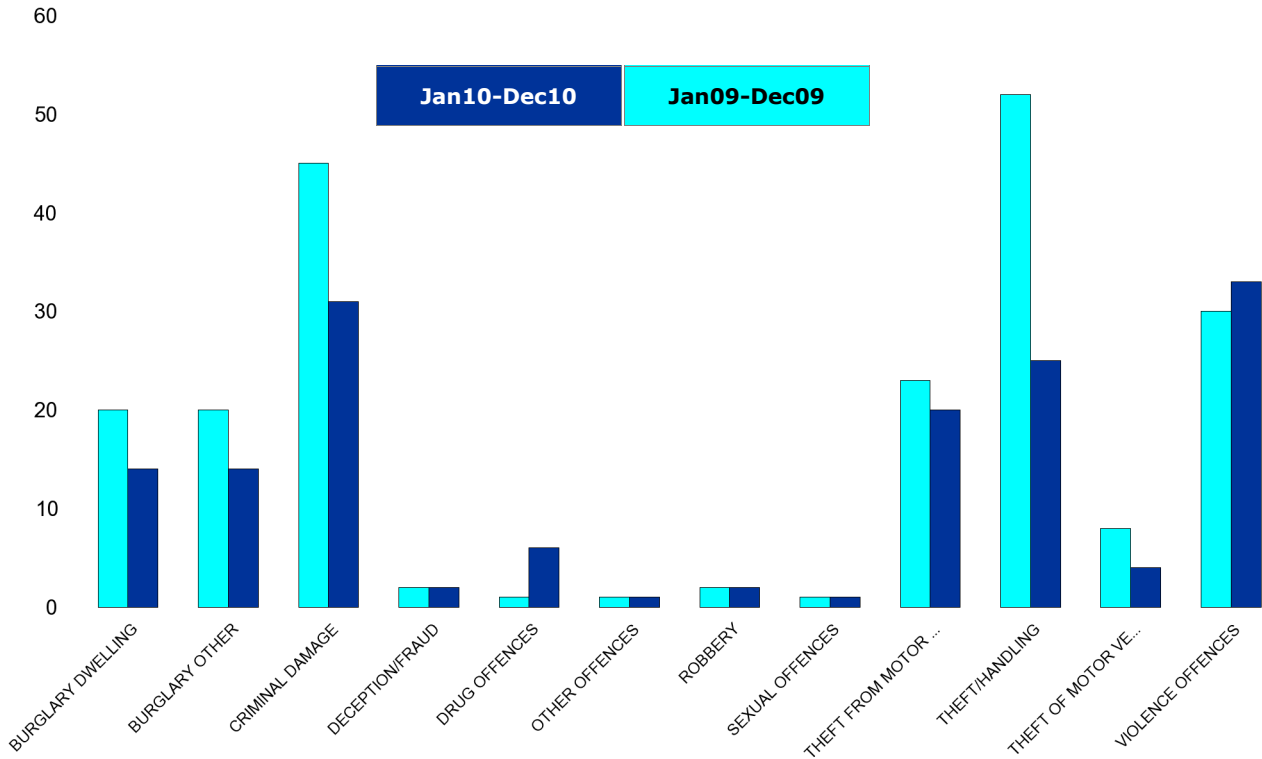


## Kettering Town Forum Report

### Brambleside

HO Group	No of Crimes (Jan10-Dec10)	No of Crimes (Jan09-Dec09)	+/- Crime	% Change
BURGLARY DWELLING	14	20	-6	-30%
BURGLARY OTHER	14	20	-6	-30%
CRIMINAL DAMAGE	31	45	-14	-31%
DECEPTION/FRAUD	2	2	0	0%
DRUG OFFENCES	6	1	5	500%
OTHER OFFENCES	1	1	0	0%
ROBBERY	2	2	0	0%
SEXUAL OFFENCES	1	1	0	0%
THEFT FROM MOTOR VEHICLES	20	23	-3	-13%
THEFT/HANDLING	25	52	-27	-52%
THEFT OF MOTOR VEHICLES	4	8	-4	-50%
VIOLENCE OFFENCES	33	30	3	10%
<b>Sum:</b>	<b>153</b>	<b>205</b>	<b>-52</b>	<b>-25%</b>

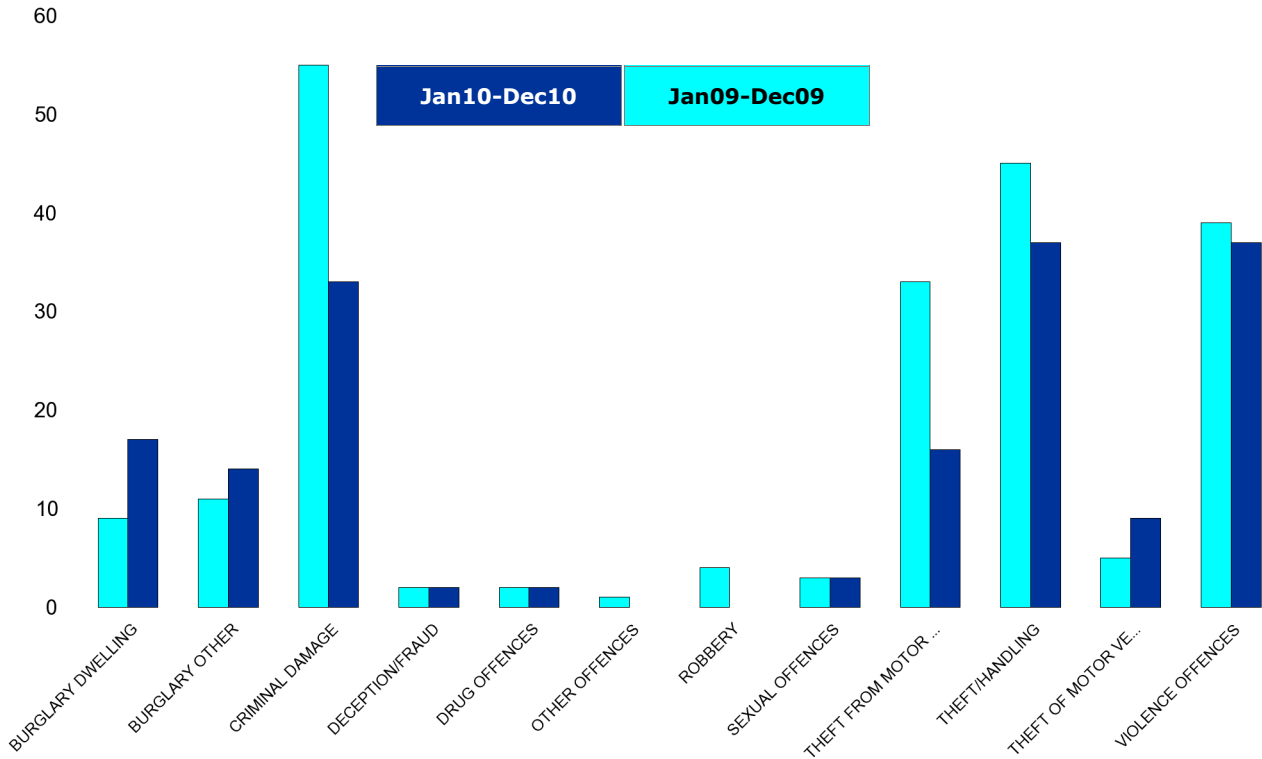
No of Cleared Up Crimes	Detection Rate (Past 12 Months)
0	0%
0	0%
3	10%
0	0%
6	100%
0	0%
0	0%
0	0%
5	25%
4	16%
2	50%
9	27%
<b>29</b>	<b>19%</b>



## Kettering Town Forum Report

### Ise Lodge

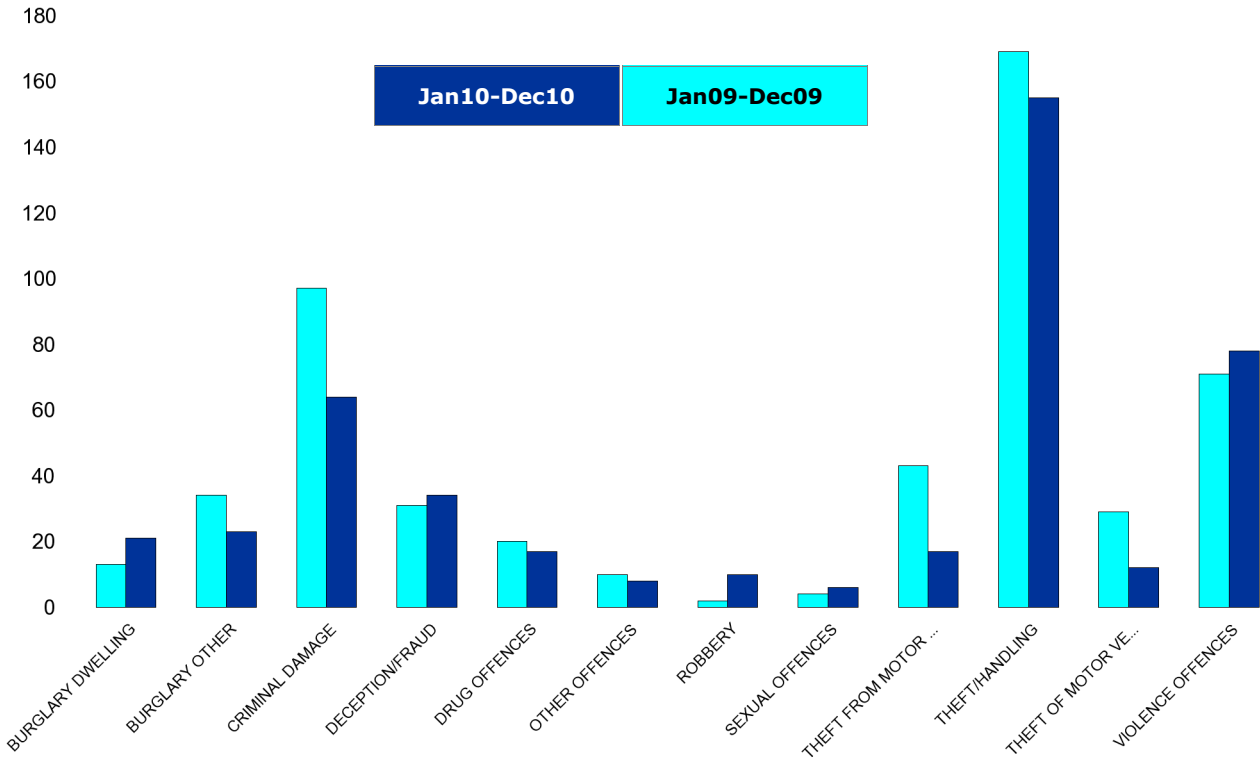
HO Group	No of Crimes (Jan10-Dec10)	No of Crimes (Jan09-Dec09)	+/- Crime	% Change	No of Cleared Up Crimes	Detection Rate (Past 12 Months)
BURGLARY DWELLING	17	9	8	89%	0	0%
BURGLARY OTHER	14	11	3	27%	1	7%
CRIMINAL DAMAGE	33	55	-22	-40%	6	18%
DECEPTION/FRAUD	2	2	0	0%	0	0%
DRUG OFFENCES	2	2	0	0%	2	100%
OTHER OFFENCES	0	1	-1	-100%	0	0%
ROBBERY	0	4	-4	-100%	0	0%
SEXUAL OFFENCES	3	3	0	0%	1	33%
THEFT FROM MOTOR VEHICLES	16	33	-17	-52%	0	0%
THEFT/HANDLING	37	45	-8	-18%	9	24%
THEFT OF MOTOR VEHICLES	9	5	4	80%	0	0%
VIOLENCE OFFENCES	37	39	-2	-5%	15	41%
<b>Sum:</b>	<b>170</b>	<b>209</b>	<b>-39</b>	<b>-19%</b>	<b>34</b>	<b>20%</b>



## Kettering Town Forum Report

### Northfield

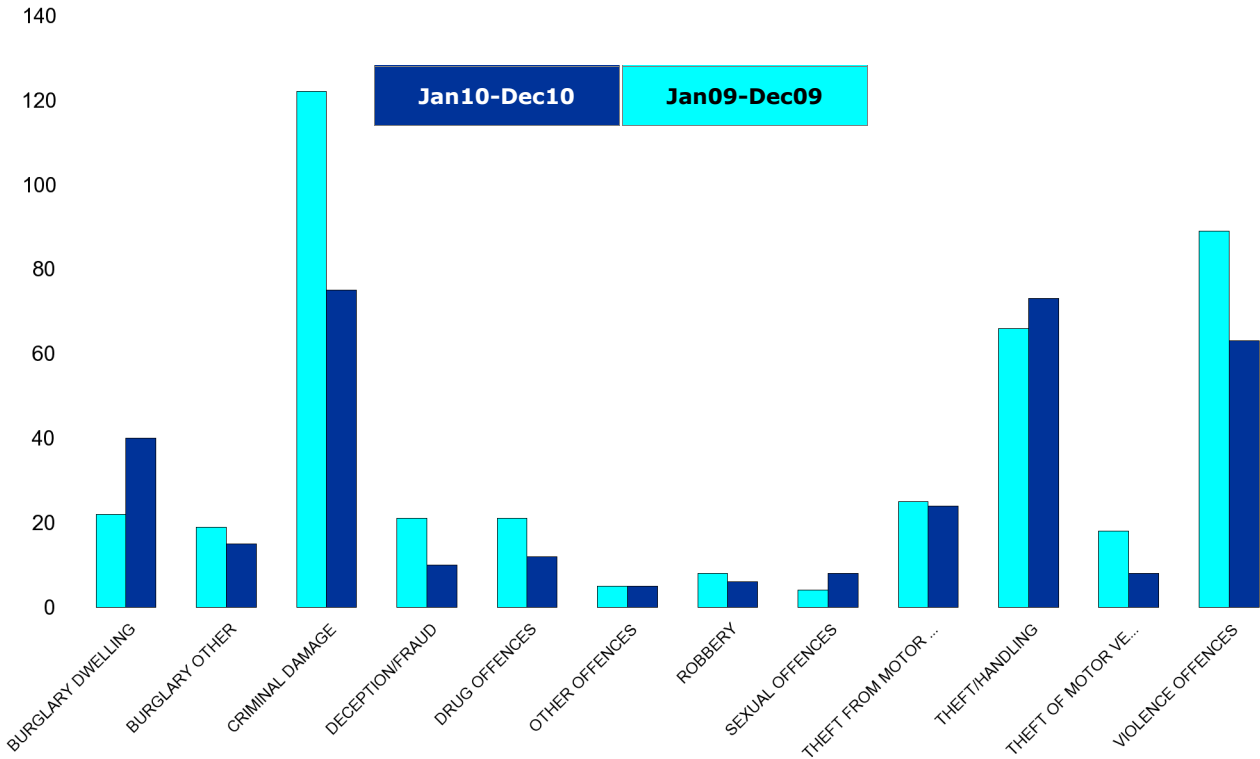
HO Group	No of Crimes (Jan10-Dec10)	No of Crimes (Jan09-Dec09)	+/- Crime	% Change	No of Cleared Up Crimes	Detection Rate (Past 12 Months)
BURGLARY DWELLING	21	13	8	62%	4	19%
BURGLARY OTHER	23	34	-11	-32%	5	22%
CRIMINAL DAMAGE	64	97	-33	-34%	9	14%
DECEPTION/FRAUD	34	31	3	10%	10	29%
DRUG OFFENCES	17	20	-3	-15%	17	100%
OTHER OFFENCES	8	10	-2	-20%	7	88%
ROBBERY	10	2	8	400%	2	20%
SEXUAL OFFENCES	6	4	2	50%	3	50%
THEFT FROM MOTOR VEHICLES	17	43	-26	-60%	0	0%
THEFT/HANDLING	155	169	-14	-8%	73	47%
THEFT OF MOTOR VEHICLES	12	29	-17	-59%	3	25%
VIOLENCE OFFENCES	78	71	7	10%	35	45%
<b>Sum:</b>	<b>445</b>	<b>523</b>	<b>-78</b>	<b>-15%</b>	<b>168</b>	<b>38%</b>



## Kettering Town Forum Report

### Pipers Hill

HO Group	No of Crimes (Jan10-Dec10)	No of Crimes (Jan09-Dec09)	+/- Crime	% Change	No of Cleared Up Crimes	Detection Rate (Past 12 Months)
BURGLARY DWELLING	40	22	18	82%	8	20%
BURGLARY OTHER	15	19	-4	-21%	1	7%
CRIMINAL DAMAGE	75	122	-47	-39%	7	9%
DECEPTION/FRAUD	10	21	-11	-52%	2	20%
DRUG OFFENCES	12	21	-9	-43%	16	133%
OTHER OFFENCES	5	5	0	0%	5	100%
ROBBERY	6	8	-2	-25%	2	33%
SEXUAL OFFENCES	8	4	4	100%	0	0%
THEFT FROM MOTOR VEHICLES	24	25	-1	-4%	2	8%
THEFT/HANDLING	73	66	7	11%	16	22%
THEFT OF MOTOR VEHICLES	8	18	-10	-56%	1	13%
VIOLENCE OFFENCES	63	89	-26	-29%	29	46%
<b>Sum:</b>	<b>339</b>	<b>420</b>	<b>-81</b>	<b>-19%</b>	<b>89</b>	<b>26%</b>

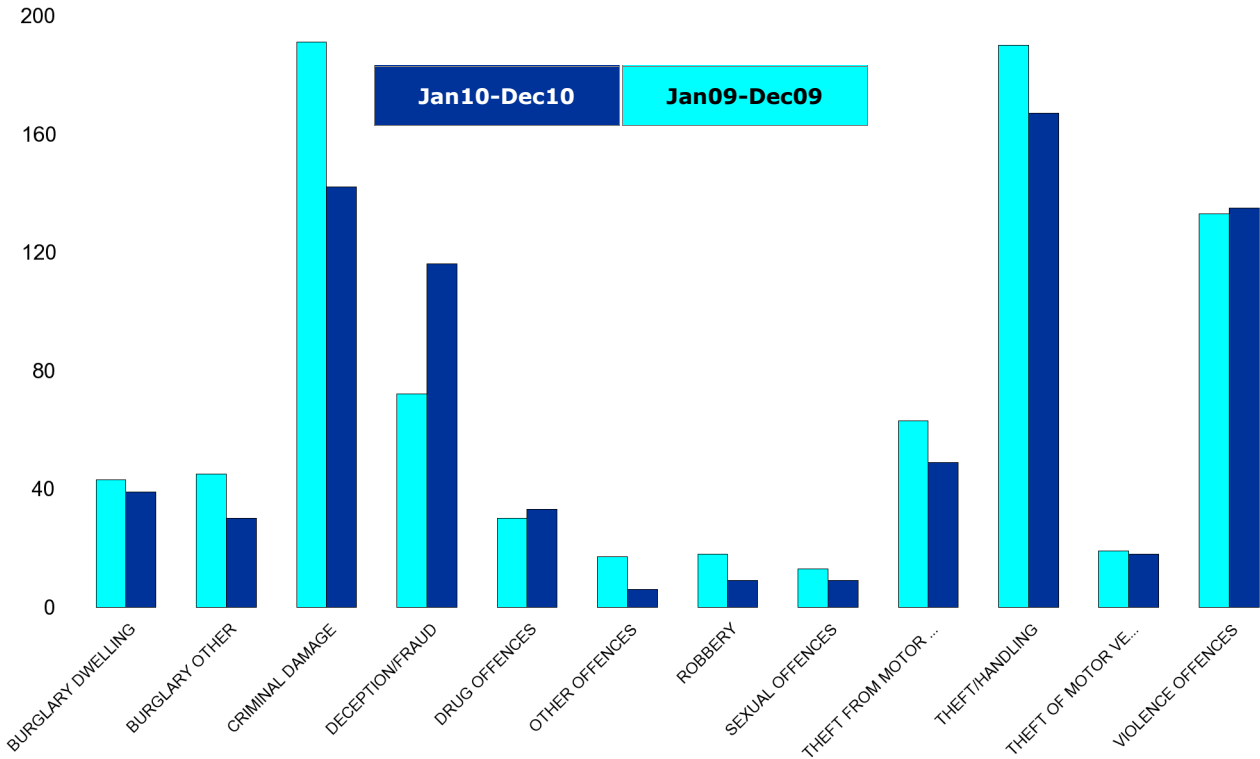


## Kettering Town Forum Report

### St Michaels and Wicksteed

HO Group	No of Crimes (Jan10-Dec10)	No of Crimes (Jan09-Dec09)	+/- Crime	% Change
BURGLARY DWELLING	39	43	-4	-9%
BURGLARY OTHER	30	45	-15	-33%
CRIMINAL DAMAGE	142	191	-49	-26%
DECEPTION/FRAUD	116	72	44	61%
DRUG OFFENCES	33	30	3	10%
OTHER OFFENCES	6	17	-11	-65%
ROBBERY	9	18	-9	-50%
SEXUAL OFFENCES	9	13	-4	-31%
THEFT FROM MOTOR VEHICLES	49	63	-14	-22%
THEFT/HANDLING	167	190	-23	-12%
THEFT OF MOTOR VEHICLES	18	19	-1	-5%
VIOLENCE OFFENCES	135	133	2	2%
<b>Sum:</b>	<b>753</b>	<b>834</b>	<b>-81</b>	<b>-10%</b>

No of Cleared Up Crimes	Detection Rate (Past 12 Months)
9	23%
7	23%
36	25%
27	23%
31	94%
9	150%
4	44%
9	100%
18	37%
51	31%
5	28%
55	41%
<b>261</b>	<b>35%</b>

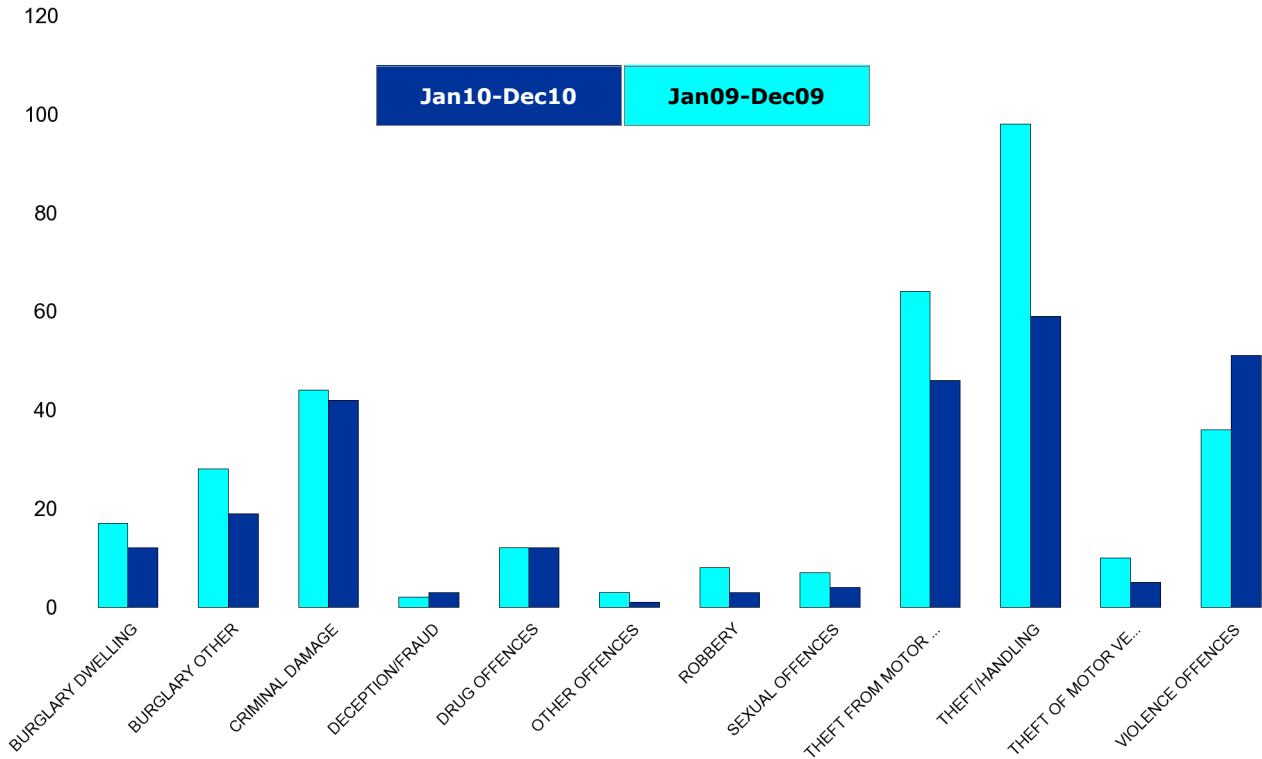




## Kettering Town Forum Report

### St Peters

HO Group	No of Crimes (Jan10-Dec10)	No of Crimes (Jan09-Dec09)	+/- Crime	% Change	No of Cleared Up Crimes	Detection Rate (Past 12 Months)
BURGLARY DWELLING	12	17	-5	-29%	2	17%
BURGLARY OTHER	19	28	-9	-32%	6	32%
CRIMINAL DAMAGE	42	44	-2	-5%	10	24%
DECEPTION/FRAUD	3	2	1	50%	1	33%
DRUG OFFENCES	12	12	0	0%	9	75%
OTHER OFFENCES	1	3	-2	-67%	1	100%
ROBBERY	3	8	-5	-63%	3	100%
SEXUAL OFFENCES	4	7	-3	-43%	4	100%
THEFT FROM MOTOR VEHICLES	46	64	-18	-28%	4	9%
THEFT/HANDLING	59	98	-39	-40%	9	15%
THEFT OF MOTOR VEHICLES	5	10	-5	-50%	1	20%
VIOLENCE OFFENCES	51	36	15	42%	20	39%
<b>Sum:</b>	<b>257</b>	<b>329</b>	<b>-72</b>	<b>-22%</b>	<b>70</b>	<b>27%</b>

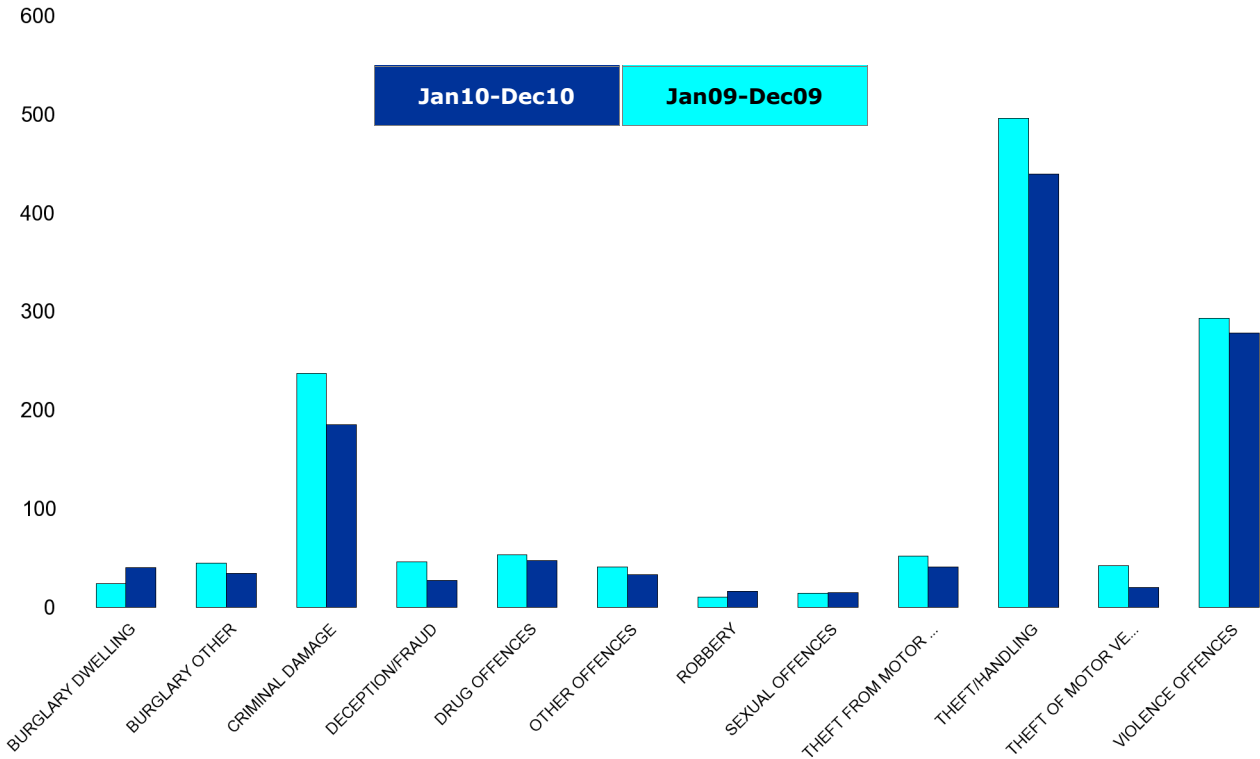


## Kettering Town Forum Report

### William Knibb

HO Group	No of Crimes (Jan10-Dec10)	No of Crimes (Jan09-Dec09)	+/- Crime	% Change
BURGLARY DWELLING	40	24	16	67%
BURGLARY OTHER	34	45	-11	-24%
CRIMINAL DAMAGE	185	237	-52	-22%
DECEPTION/FRAUD	27	46	-19	-41%
DRUG OFFENCES	47	53	-6	-11%
OTHER OFFENCES	33	41	-8	-20%
ROBBERY	16	10	6	60%
SEXUAL OFFENCES	15	14	1	7%
THEFT FROM MOTOR VEHICLES	41	52	-11	-21%
THEFT/HANDLING	439	496	-57	-11%
THEFT OF MOTOR VEHICLES	20	42	-22	-52%
VIOLENCE OFFENCES	278	293	-15	-5%
<b>Sum:</b>	<b>1175</b>	<b>1353</b>	<b>-178</b>	<b>-13%</b>

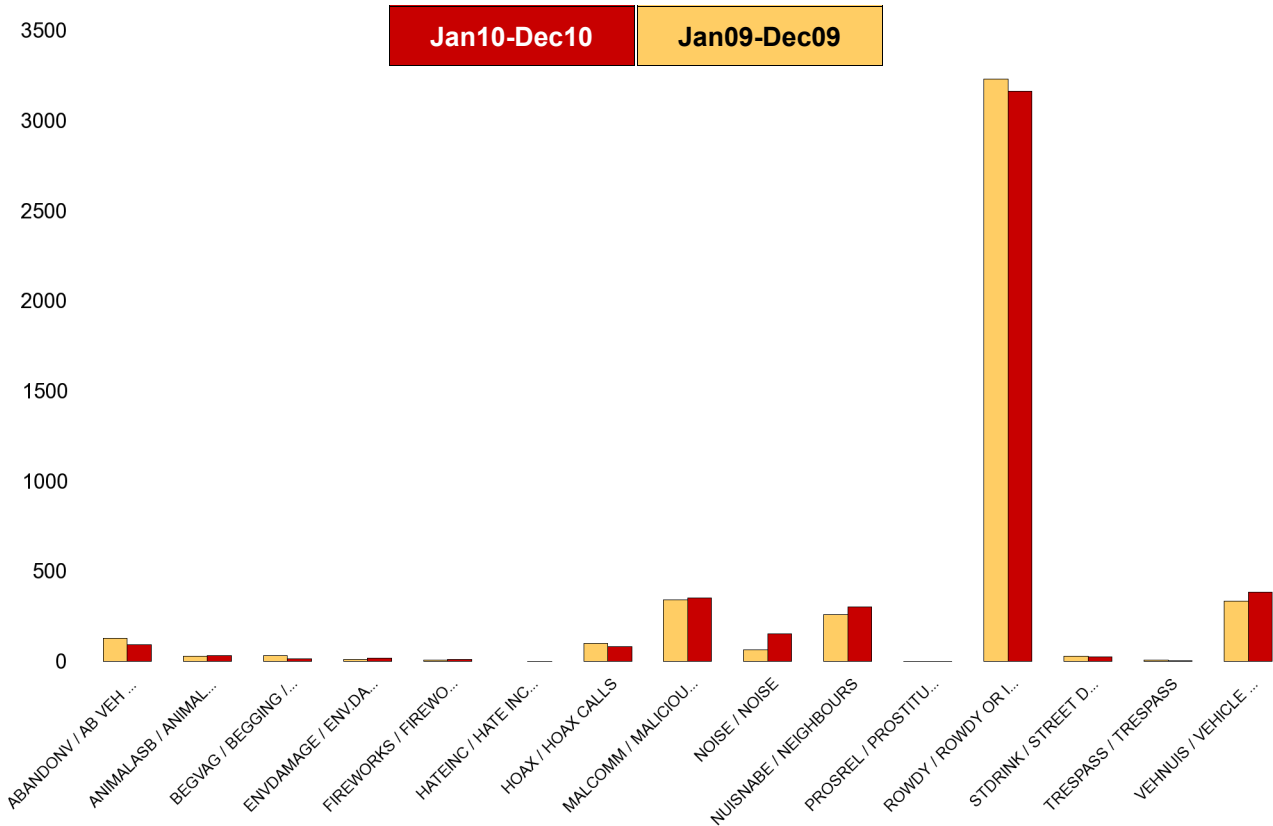
No of Cleared Up Crimes	Detection Rate (Past 12 Months)
14	35%
5	15%
43	23%
18	67%
49	104%
27	82%
1	6%
6	40%
13	32%
215	49%
3	15%
144	52%
<b>538</b>	<b>46%</b>



# Kettering Town Forum Report

## Kettering Town SCT - ASB

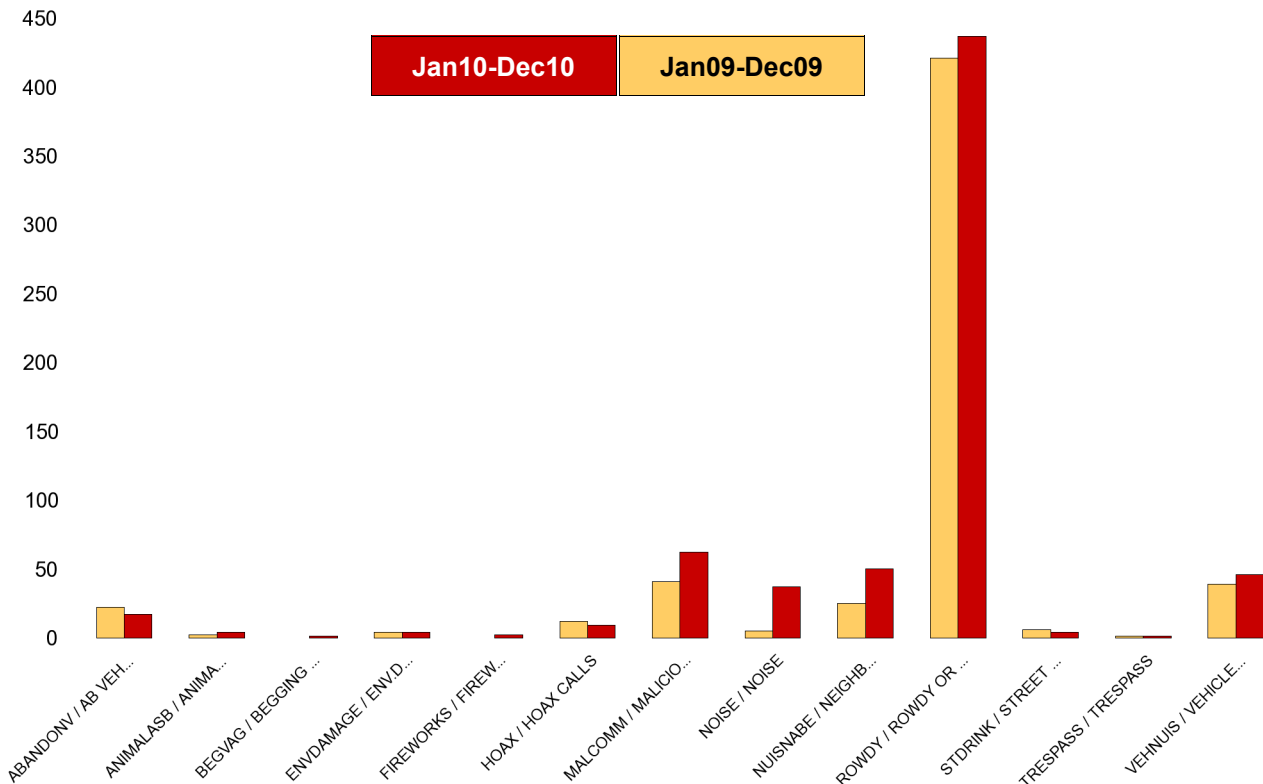
NSIR Closing Category 1 Desc	No of Incidents (Jan10-Dec10)	No of Incidents (Jan09-Dec09)	+/- Incidents	% Change Incidents
AB VEH NOT STOLEN/OBSTRUCT	93	131	-38	-29%
ANIMAL RELATED INC ANTI-SOCIAL	33	30	3	10%
BEGGING / VAGRANCY	17	35	-18	-51%
ENV.DAMAGE/ LITTER/ NEEDLES	21	14	7	50%
FIREWORK RELATED INCIDENTS	12	8	4	50%
HATE INC (NOT NOTIFIABLE CRIME	1	0	1	0%
HOAX CALLS	84	103	-19	-18%
MALICIOUS / NUISANCE COMMS	354	342	12	4%
NOISE	153	66	87	132%
NEIGHBOURS	303	260	43	17%
PROSTITUTION RELATED ACTIVITY	1	3	-2	-67%
ROWDY OR INCONSIDERATE BEHAV	3165	3234	-69	-2%
STREET DRINKING	25	31	-6	-19%
TRESPASS	4	10	-6	-60%
VEHICLE NUIS & INAPPROP VEH US	386	336	50	15%
<b>Sum:</b>	<b>4652</b>	<b>4603</b>	<b>49</b>	<b>1%</b>



## Kettering Town Forum Report

### All Saints

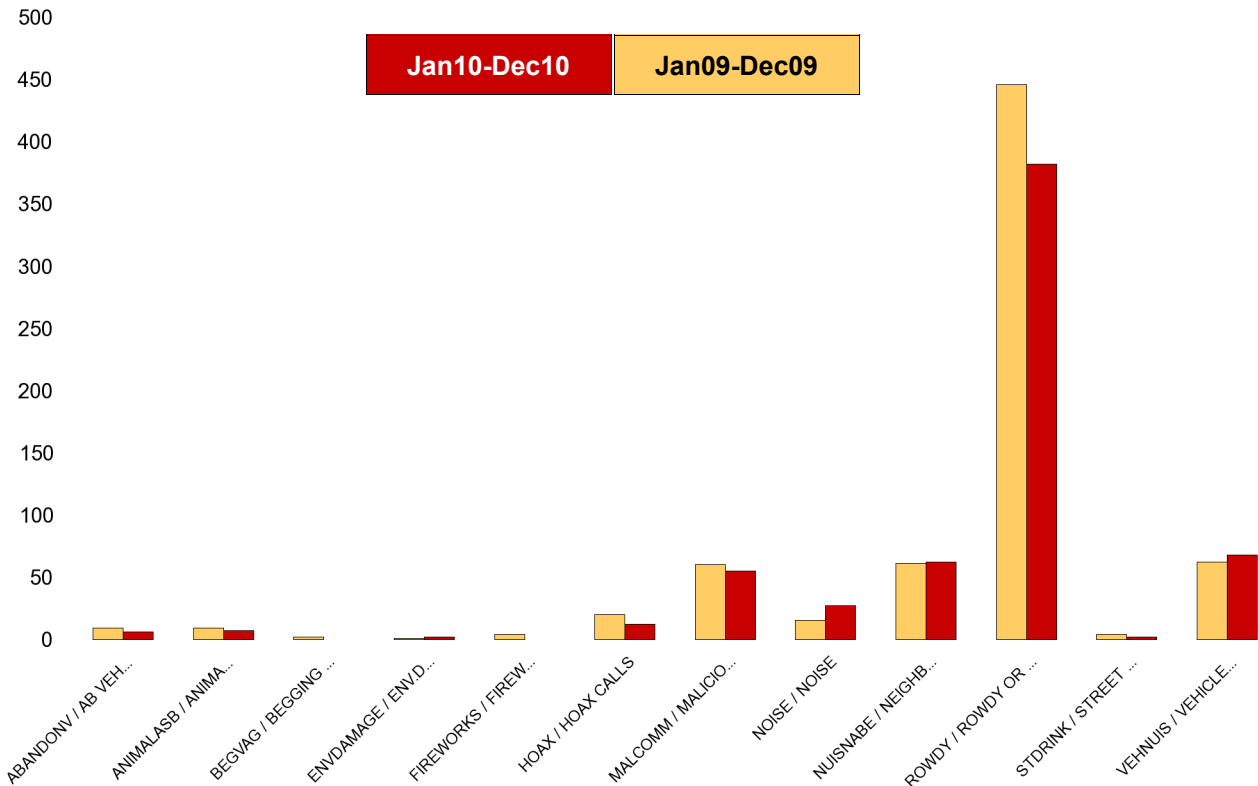
NSIR Closing Category 1 Desc	No of Incidents (Jan10-Dec10)	No of Incidents (Jan09-Dec09)	+/- Incidents	% Change Incidents
AB VEH NOT STOLEN/OBSTRUCT	17	22	-5	-23%
ANIMAL RELATED INC ANTI-SOCIAL	4	2	2	100%
BEGGING / VAGRANCY	1	0	1	0%
ENV.DAMAGE/ LITTER/ NEEDLES	4	4	0	0%
FIREWORK RELATED INCIDENTS	2	0	2	0%
HOAX CALLS	9	12	-3	-25%
MALICIOUS / NUISANCE COMMS	62	41	21	51%
NOISE	37	5	32	640%
NEIGHBOURS	50	25	25	100%
ROWDY OR INCONSIDERATE BEHAV	437	421	16	4%
STREET DRINKING	4	6	-2	-33%
TRESPASS	1	1	0	0%
VEHICLE NUIS & INAPPROP VEH US	46	39	7	18%
<b>Sum:</b>	<b>674</b>	<b>578</b>	<b>96</b>	<b>17%</b>



## Kettering Town Forum Report

### Avondale Grange

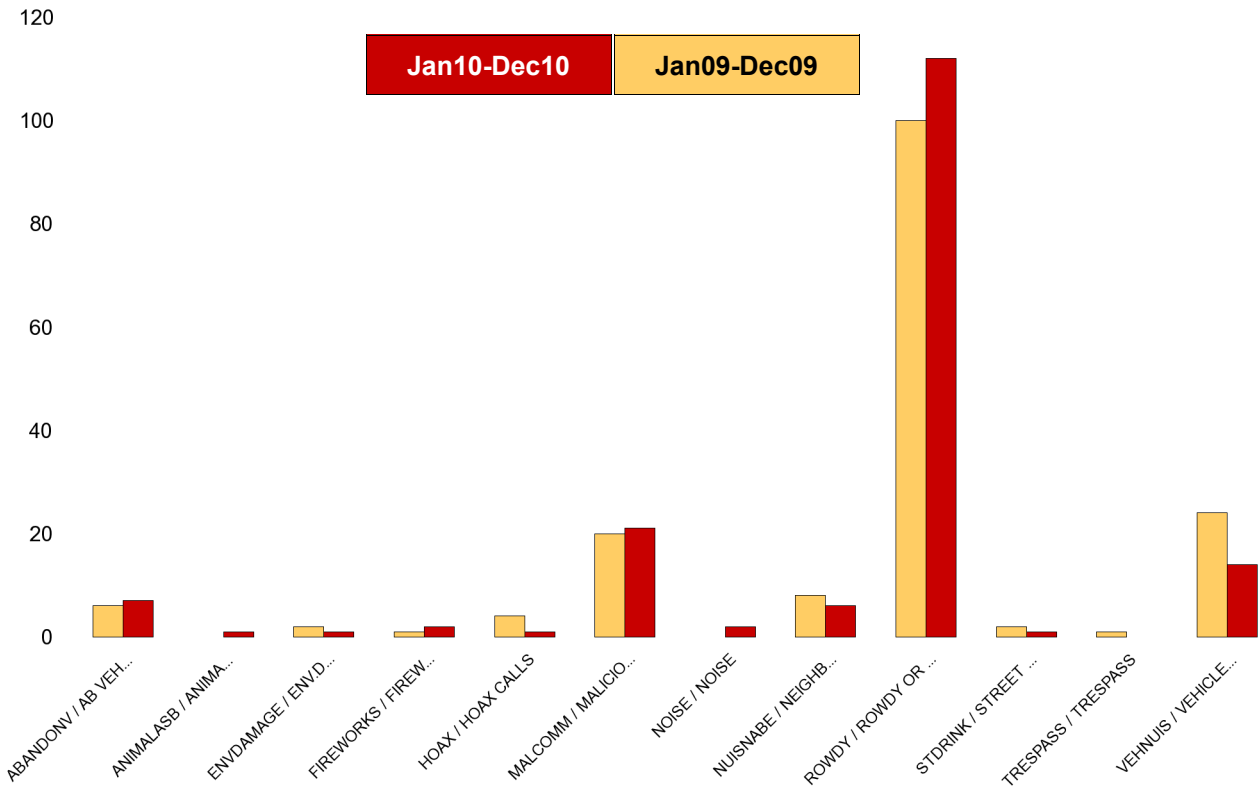
NSIR Closing Category 1 Desc	No of Incidents (Jan10-Dec10)	No of Incidents (Jan09-Dec09)	+/- Incidents	% Change Incidents
AB VEH NOT STOLEN/OBSTRUCT	6	9	-3	-33%
ANIMAL RELATED INC ANTI-SOCIAL	7	9	-2	-22%
BEGGING / VAGRANCY	0	2	-2	-100%
ENV.DAMAGE/ LITTER/ NEEDLES	2	1	1	100%
FIREWORK RELATED INCIDENTS	0	4	-4	-100%
HOAX CALLS	12	20	-8	-40%
MALICIOUS / NUISANCE COMMS	55	60	-5	-8%
NOISE	27	15	12	80%
NEIGHBOURS	62	61	1	2%
ROWDY OR INCONSIDERATE BEHAV	382	446	-64	-14%
STREET DRINKING	2	4	-2	-50%
VEHICLE NUIS & INAPPROP VEH US	68	62	6	10%
<b>Sum:</b>	<b>623</b>	<b>693</b>	<b>-70</b>	<b>-10%</b>



## Kettering Town Forum Report

### Brambleside

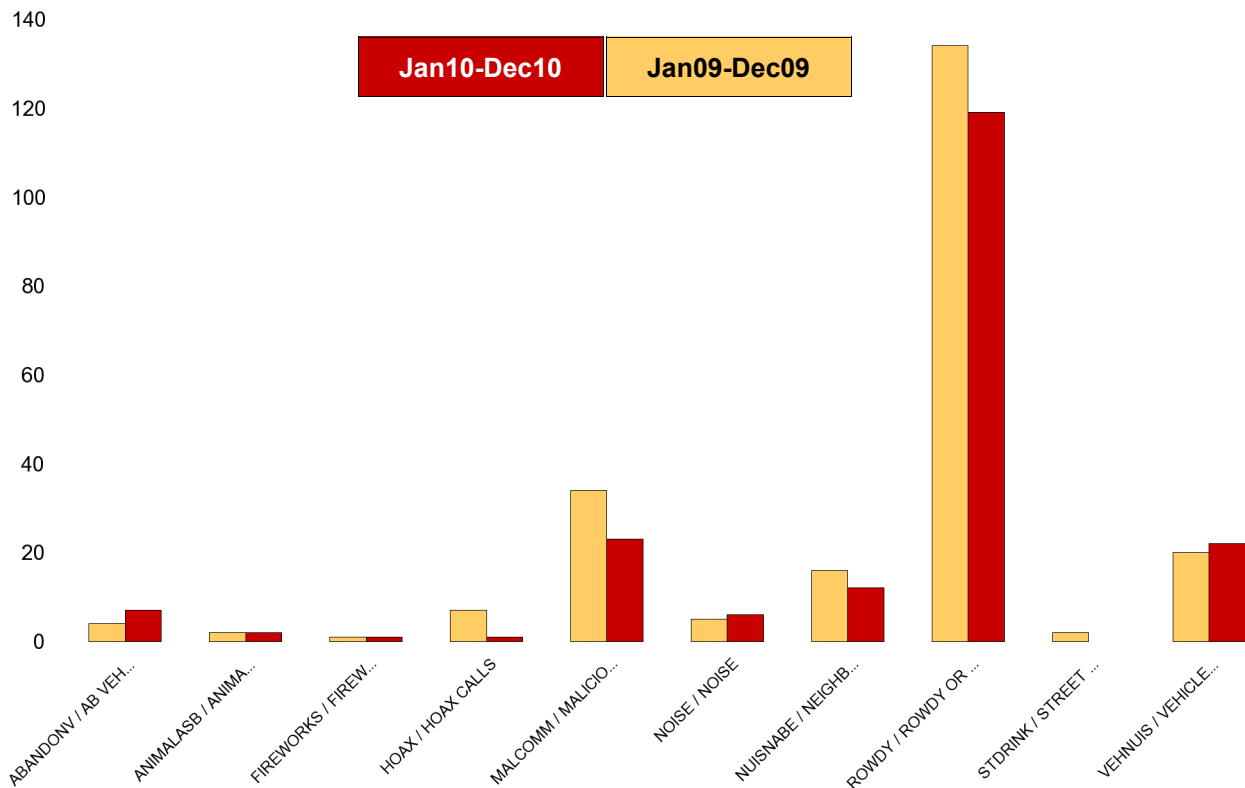
NSIR Closing Category 1 Desc	No of Incidents (Jan10-Dec10)	No of Incidents (Jan09-Dec09)	+/- Incidents	% Change Incidents
AB VEH NOT STOLEN/OBSTRUCT	7	6	1	17%
ANIMAL RELATED INC ANTI-SOCIAL	1	0	1	0%
ENV.DAMAGE/ LITTER/ NEEDLES	1	2	-1	-50%
FIREWORK RELATED INCIDENTS	2	1	1	100%
HOAX CALLS	1	4	-3	-75%
MALICIOUS / NUISANCE COMMS	21	20	1	5%
NOISE	2	0	2	0%
NEIGHBOURS	6	8	-2	-25%
ROWDY OR INCONSIDERATE BEHAV	112	100	12	12%
STREET DRINKING	1	2	-1	-50%
TRESPASS	0	1	-1	-100%
VEHICLE NUIS & INAPPROP VEH US	14	24	-10	-42%
<b>Sum:</b>	<b>168</b>	<b>168</b>	<b>0</b>	<b>0%</b>



## Kettering Town Forum Report

### Ise Lodge

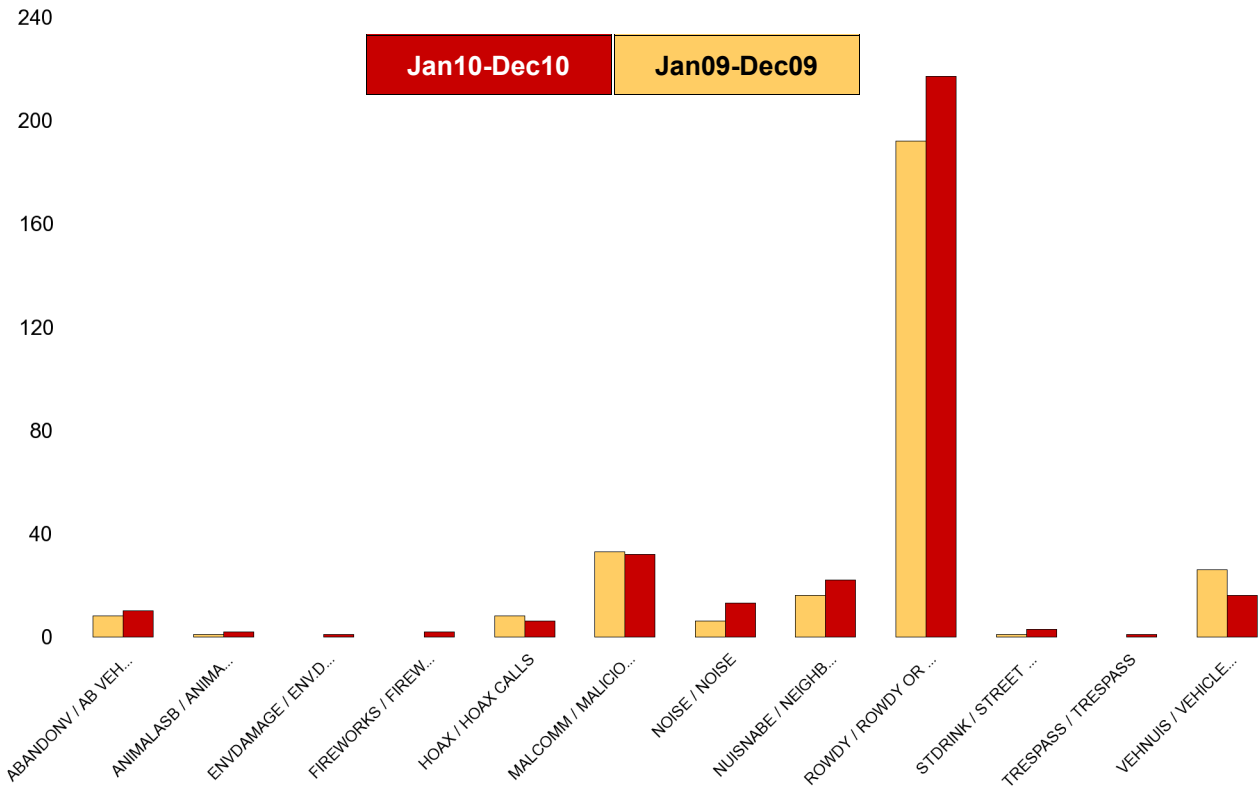
NSIR Closing Category 1 Desc	No of Incidents (Jan10-Dec10)	No of Incidents (Jan09-Dec09)	+/- Incidents	% Change Incidents
AB VEH NOT STOLEN/OBSTRUCT	7	4	3	75%
ANIMAL RELATED INC ANTI-SOCIAL	2	2	0	0%
FIREWORK RELATED INCIDENTS	1	1	0	0%
HOAX CALLS	1	7	-6	-86%
MALICIOUS / NUISANCE COMMS	23	34	-11	-32%
NOISE	6	5	1	20%
NEIGHBOURS	12	16	-4	-25%
ROWDY OR INCONSIDERATE BEHAV	119	134	-15	-11%
STREET DRINKING	0	2	-2	-100%
VEHICLE NUIS & INAPPROP VEH US	22	20	2	10%
<b>Sum:</b>	<b>193</b>	<b>225</b>	<b>-32</b>	<b>-14%</b>



## Kettering Town Forum Report

### Northfield

NSIR Closing Category 1 Desc	No of Incidents (Jan10-Dec10)	No of Incidents (Jan09-Dec09)	+/- Incidents	% Change Incidents
AB VEH NOT STOLEN/OBSTRUCT	10	8	2	25%
ANIMAL RELATED INC ANTI-SOCIAL	2	1	1	100%
ENV.DAMAGE/ LITTER/ NEEDLES	1	0	1	0%
FIREWORK RELATED INCIDENTS	2	0	2	0%
HOAX CALLS	6	8	-2	-25%
MALICIOUS / NUISANCE COMMS	32	33	-1	-3%
NOISE	13	6	7	117%
NEIGHBOURS	22	16	6	38%
ROWDY OR INCONSIDERATE BEHAV	217	192	25	13%
STREET DRINKING	3	1	2	200%
TRESPASS	1	0	1	0%
VEHICLE NUIS & INAPPROP VEH US	16	26	-10	-38%
<b>Sum:</b>	<b>325</b>	<b>291</b>	<b>34</b>	<b>12%</b>

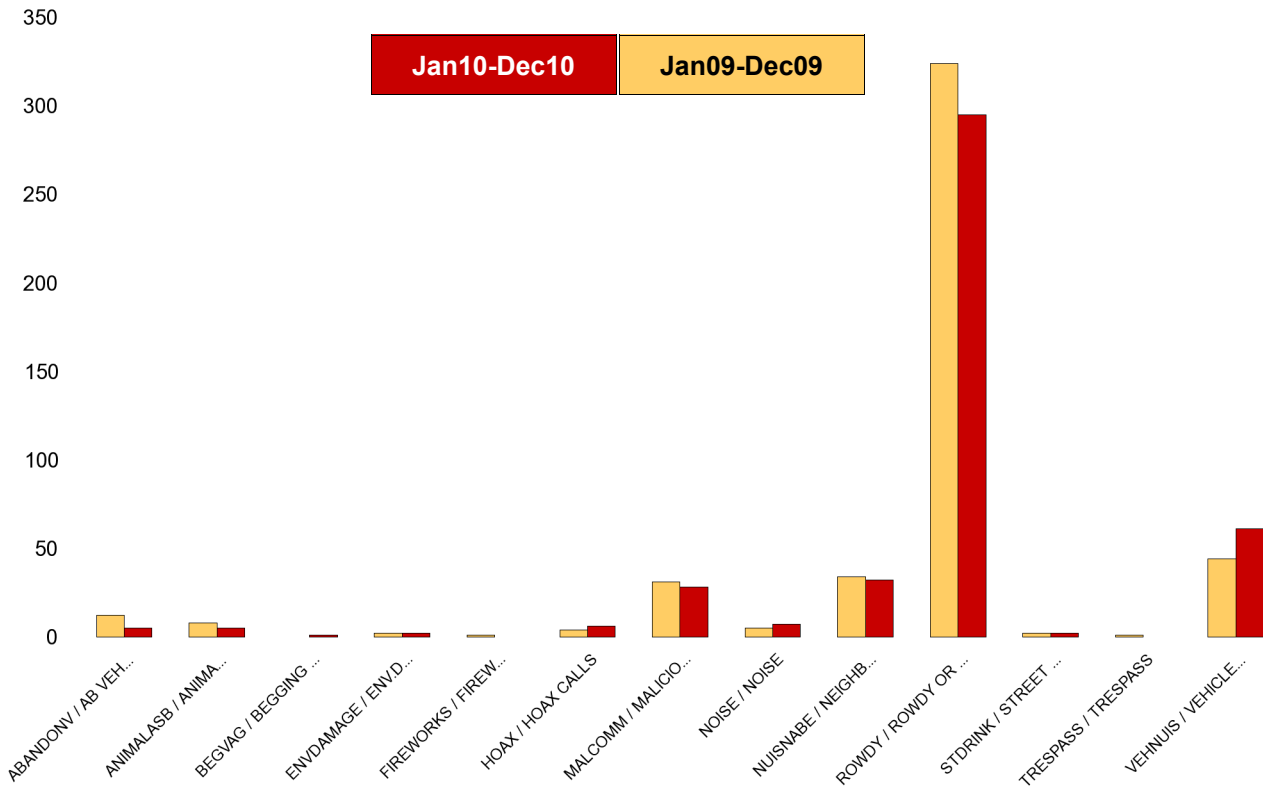




## Kettering Town Forum Report

### Pipers Hill

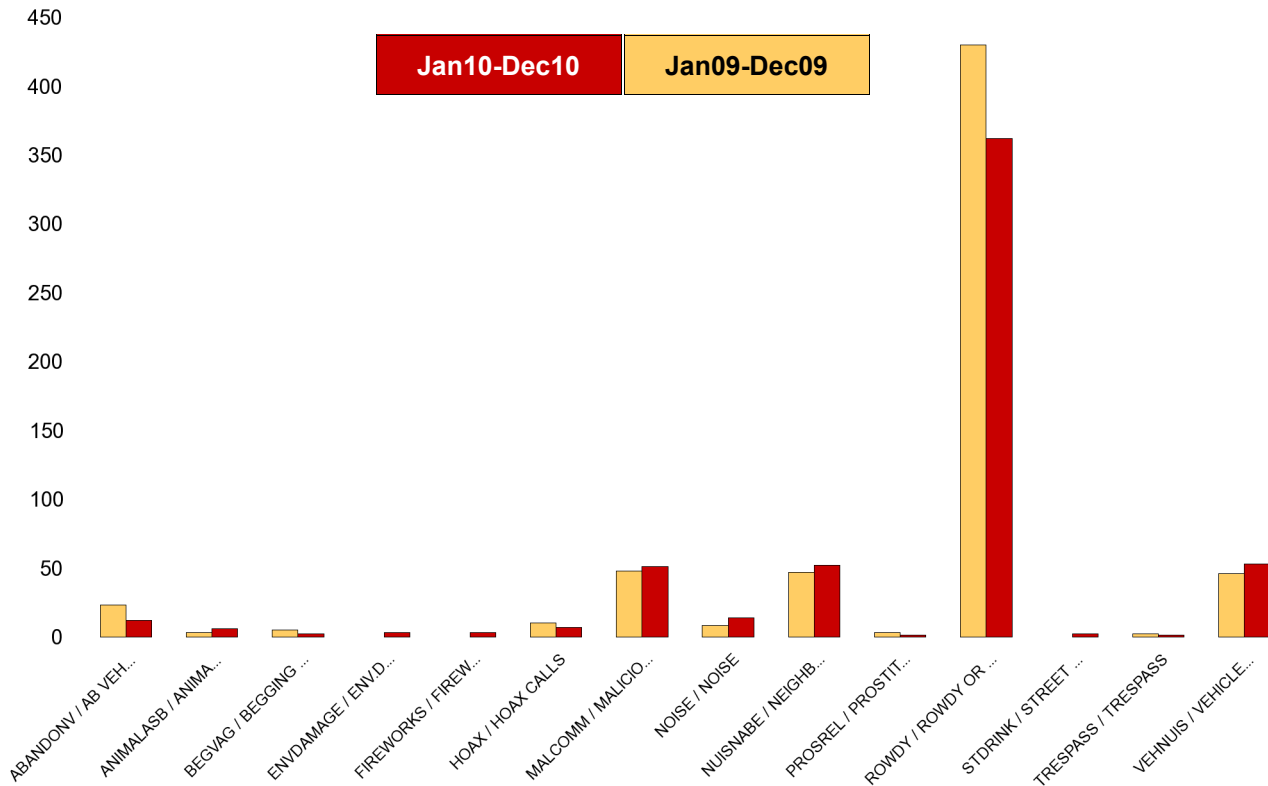
NSIR Closing Category 1 Desc	No of Incidents (Jan10-Dec10)	No of Incidents (Jan09-Dec09)	+/- Incidents	% Change Incidents
AB VEH NOT STOLEN/OBSTRUCT	5	12	-7	-58%
ANIMAL RELATED INC ANTI-SOCIAL	5	8	-3	-38%
BEGGING / VAGRANCY	1	0	1	0%
ENV.DAMAGE/ LITTER/ NEEDLES	2	2	0	0%
FIREWORK RELATED INCIDENTS	0	1	-1	-100%
HOAX CALLS	6	4	2	50%
MALICIOUS / NUISANCE COMMS	28	31	-3	-10%
NOISE	7	5	2	40%
NEIGHBOURS	32	34	-2	-6%
ROWDY OR INCONSIDERATE BEHAV	295	324	-29	-9%
STREET DRINKING	2	2	0	0%
TRESPASS	0	1	-1	-100%
VEHICLE NUIS & INAPPROP VEH US	61	44	17	39%
<b>Sum:</b>	<b>444</b>	<b>468</b>	<b>-24</b>	<b>-5%</b>



## Kettering Town Forum Report

### St Michaels and Wickstead

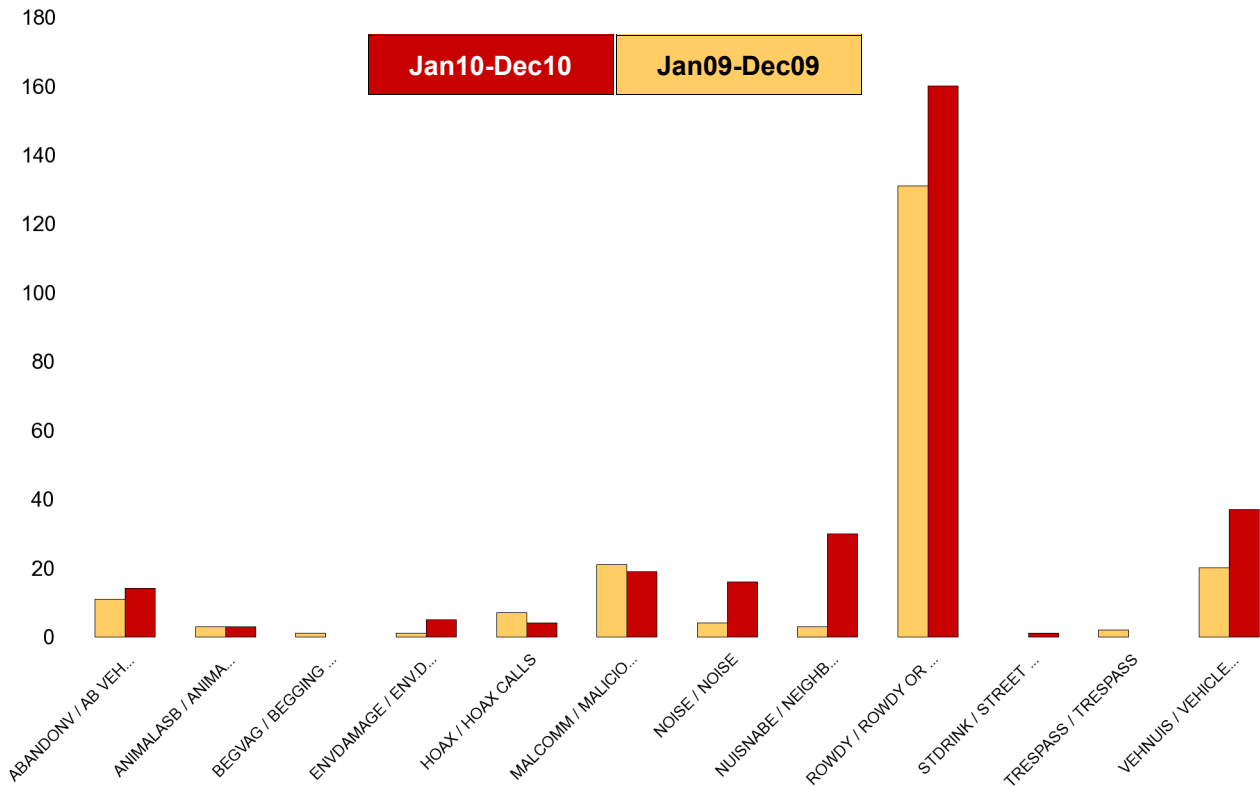
NSIR Closing Category 1 Desc	No of Incidents (Jan10-Dec10)	No of Incidents (Jan09-Dec09)	+/- Incidents	% Change Incidents
AB VEH NOT STOLEN/OBSTRUCT	12	23	-11	-48%
ANIMAL RELATED INC ANTI-SOCIAL	6	3	3	100%
BEGGING / VAGRANCY	2	5	-3	-60%
ENV.DAMAGE/ LITTER/ NEEDLES	3	0	3	0%
FIREWORK RELATED INCIDENTS	3	0	3	0%
HOAX CALLS	7	10	-3	-30%
MALICIOUS / NUISANCE COMMS	51	48	3	6%
NOISE	14	8	6	75%
NEIGHBOURS	52	47	5	11%
PROSTITUTION RELATED ACTIVITY	1	3	-2	-67%
ROWDY OR INCONSIDERATE BEHAV	362	430	-68	-16%
STREET DRINKING	2	0	2	0%
TRESPASS	1	2	-1	-50%
VEHICLE NUIS & INAPPROP VEH US	53	46	7	15%
<b>Sum:</b>	<b>569</b>	<b>625</b>	<b>-56</b>	<b>-9%</b>



## Kettering Town Forum Report

### St Peters

NSIR Closing Category 1 Desc	No of Incidents (Jan10-Dec10)	No of Incidents (Jan09-Dec09)	+/- Incidents	% Change Incidents
AB VEH NOT STOLEN/OBSTRUCT	14	11	3	27%
ANIMAL RELATED INC ANTI-SOCIAL	3	3	0	0%
BEGGING / VAGRANCY	0	1	-1	-100%
ENV.DAMAGE/ LITTER/ NEEDLES	5	1	4	400%
HOAX CALLS	4	7	-3	-43%
MALICIOUS / NUISANCE COMMS	19	21	-2	-10%
NOISE	16	4	12	300%
NEIGHBOURS	30	3	27	900%
ROWDY OR INCONSIDERATE BEHAV	160	131	29	22%
STREET DRINKING	1	0	1	0%
TRESPASS	0	2	-2	-100%
VEHICLE NUIS & INAPPROP VEH US	37	20	17	85%
<b>Sum:</b>	<b>289</b>	<b>204</b>	<b>85</b>	<b>42%</b>



## Kettering Town Forum Report

### William Knibb

NSIR Closing Category 1 Desc	No of Incidents (Jan10-Dec10)	No of Incidents (Jan09-Dec09)	+/- Incidents	% Change Incidents
AB VEH NOT STOLEN/OBSTRUCT	15	36	-21	-58%
ANIMAL RELATED INC ANTI-SOCIAL	3	2	1	50%
BEGGING / VAGRANCY	13	27	-14	-52%
ENV.DAMAGE/ LITTER/ NEEDLES	3	4	-1	-25%
FIREWORK RELATED INCIDENTS	2	1	1	100%
HATE INC (NOT NOTIFIABLE CRIME	1	0	1	0%
HOAX CALLS	38	31	7	23%
MALICIOUS / NUISANCE COMMS	63	54	9	17%
NOISE	31	18	13	72%
NEIGHBOURS	37	50	-13	-26%
ROWDY OR INCONSIDERATE BEHAV	1081	1056	25	2%
STREET DRINKING	10	14	-4	-29%
TRESPASS	1	3	-2	-67%
VEHICLE NUIS & INAPPROP VEH US	69	55	14	25%
<b>Sum:</b>	<b>1367</b>	<b>1351</b>	<b>16</b>	<b>1%</b>

