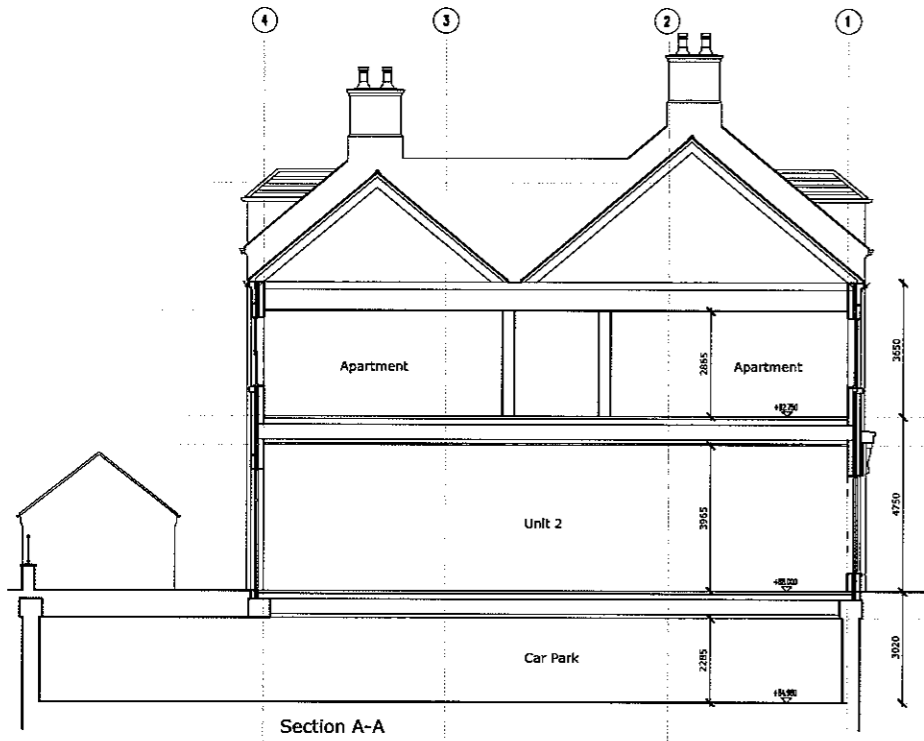
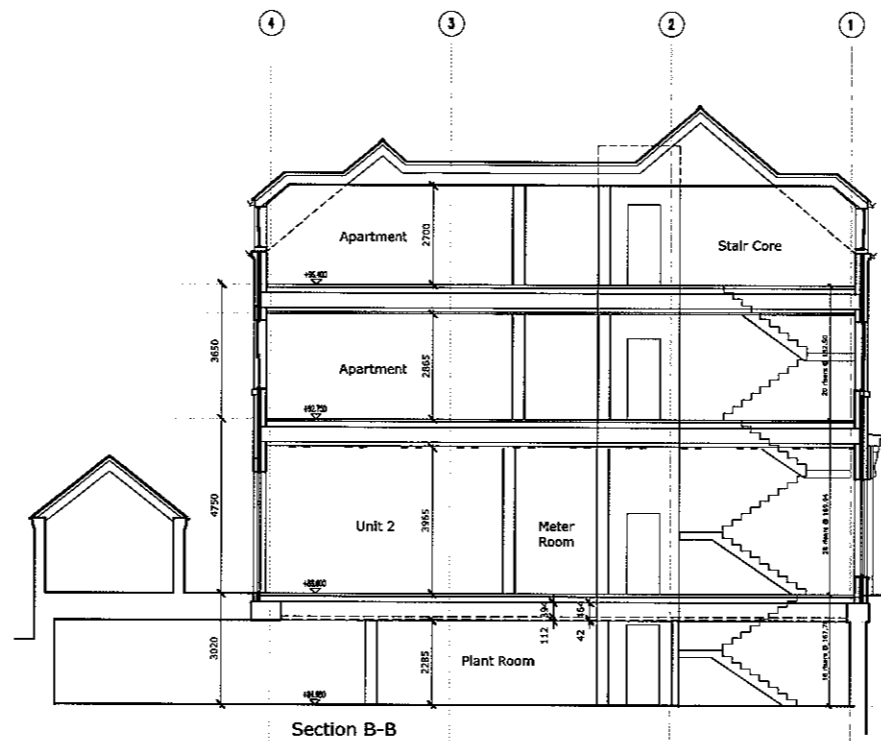


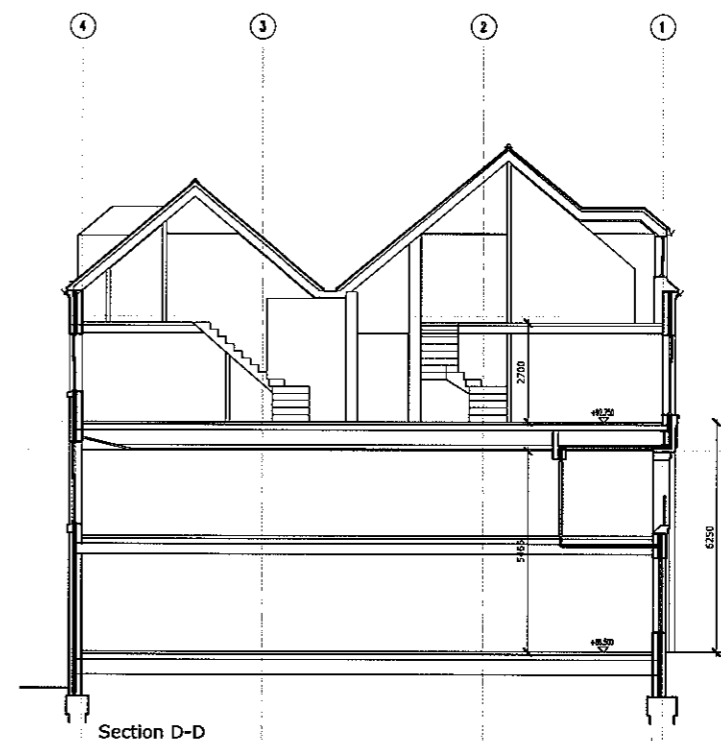
REV. DATE	DESCRIPTION
- 071209	Dwg no. updated to 8833-S001 Rev - Previously dwg 8763-008-S001 Rev B Rear elevation updated to suit site. - SC.
A 080210	Juliet Balconies removed. Notes updated Incorporating English Heritage comments - SC.



Section A-A



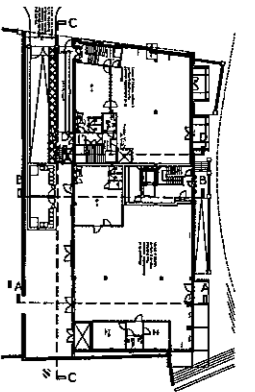
Section B-B



Section D-D



- ① Natural clay tile pitched roof
- ② Natural slate type 1, dark grey.
- ③ Natural slate type 2, blue grey.
- ④ Wet cast stone.
- ⑤ Facing brickwork in Flemish bond type 1.
- ⑥ Facing brickwork in Flemish bond type 2.
- ⑦ Facing brickwork in Flemish bond type 2 with recessed joints.
- ⑧ Render onto blockwork cavity construction. Colour - cream.
- ⑨ Painted timber sliding sash, double glazed windows.
- ⑩ Painted timber casement, double glazed windows.
- ⑪ Wet cast stone flat gauged arch.
- ⑫ Brick flat gauged arch.
- ⑬ Black painted cast iron half-round gutter on drive irons.
- ⑭ Square, black painted cast iron downpipes.
- ⑮ Solid timber painted door (with fanlight above if shown)
- ⑯ Brick chimney and terracotta pot.
- ⑰ Traditional painted timber shop front with single glazing.
- ⑱ Bronzed metal appearance, metal framed shop front with single glazing.
- ⑲ Signage zone. Final signage by others & subject to separate planning application by others.
- ⑳ Dormer window with double glazed painted timber casement window, slated hipped roof, timber structure and lead cheeks.
- ㉑ Wet cast stone coping.
- ㉒ Domer window with double glazed painted timber sliding sash window, slated hipped roof, timber structure and lead cheeks.
- ㉓ Reclaimed natural stone.
- ㉔ Lead flashing.
- ㉕ Louvers, polyester powder coated with bird wire guarding.
- ㉖ Blank window.
- ㉗ Painted cast iron bellustrade.
- ㉘ Brick curved arch.
- ㉙ Door and window unit, painted timber frame and double glazed.
- ㉚ Corbelled brick dentil course.
- ㉛ Double glazed concertina windows with stalliser and transom in Bronzed metal finish.
- ㉜ Rusticated, reconstituted wet-cast stone.
- ㉝ Painted cast iron grill to opening.
- ㉞ Existing stone wall and railing.
- ㉟ Timber framed, double glazed door with Juliet balcony.
- ㊱ Glass canopy with steel frame.
- ㊲ Great Tew ironstone.
- ㊳ Re-used gale from Market Place entrance to church grounds.
- ㊴ Painted cast iron balcony.
- ㊵ Existing boundary wall with new railings.



**Kettering Market Place Buildings**

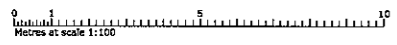
**Sections**

Drawing status: Planning  
 Cad reference: 8765-008-P001  
 Drawn: SC  
 Team: SH  
 Date: 06/07/09  
 Scale: 1:100 at A1  
 Project no: 8763-008  
 Revision: A

**Drawing no: S001**

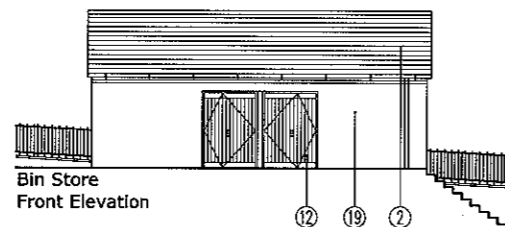
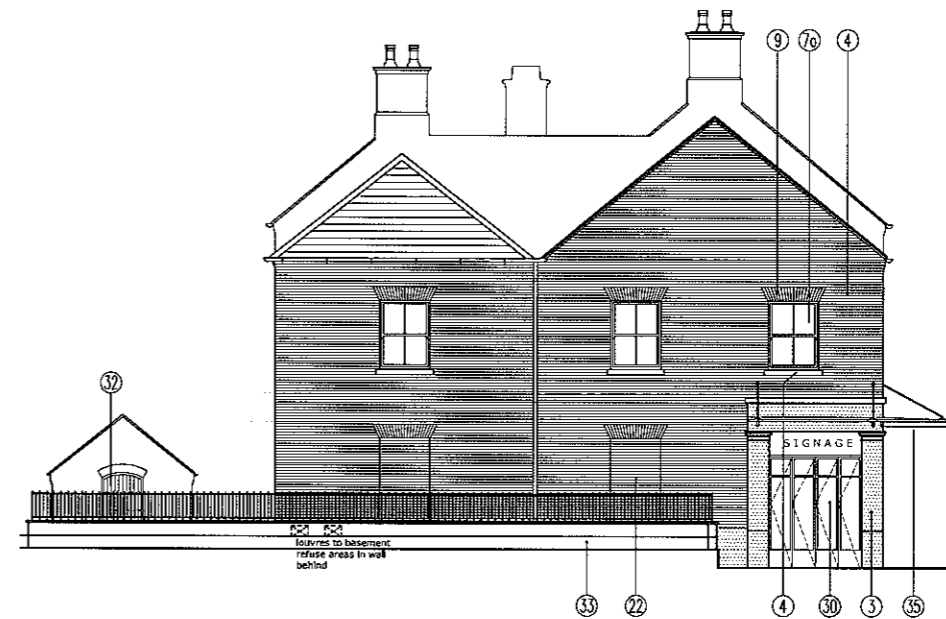
Architects | Planners  
**STEPHEN GEORGE & PARTNERS**

170 London Road  
 Leicester, LE2 1ND  
 t: 0116 247 0557 f: 0116 254 1095  
 www.stephengeorge.co.uk



This drawing, the works and concepts depicted are copyright of Stephen George & Partners and may not be reproduced or made use of, either directly or indirectly without express written consent. All heights, levels, sizes and dimensions to be checked on site before any work is put to hand.

REV. DATE	DESCRIPTION
- 080210	As per SK-E001-6 + revised smaller arches to unit 1 Market Place elevation and more prominent entrance- SC.
A 090210	Rear Juliet balconies removed. Railings to blank windows removed. Unit 2 entrance more prominent with single door and stone surround. Associated columns are wider with a deeper entablature. Opening glazing incorporates solid base and transoms. - SC.



- 1 Natural clay tile pitched roof
- 2 Natural slate type 1, dark grey.
- 3 Natural slate type 2, blue grey.
- 4 Wet cast stone.
- 5 Facing brickwork in Flemish bond type 1.
- 6 Facing brickwork in Flemish bond type 2.
- 7 Facing brickwork in Flemish bond type 2 with recessed joints.
- 8 Render onto blockwork cavity construction. Colour - cream.
- 9 Painted timber sliding sash, double glazed windows.
- 10 Painted timber casement, double glazed windows.
- 11 Wet cast stone flat gauged arch.
- 12 Area of existing wall to be demolished and re-built to suit existing wall coursing shown hatched
- 13 Brick flat gauged arch.
- 14 Black painted cast iron half-round gutter on drive irons.
- 15 Square, black painted cast iron downpipes.
- 16 Solid timber painted door (with fanlight above if shown)
- 17 Brick chimney and terracotta pot.
- 18 Traditional painted timber shop front with single glazing.
- 19 Bronzed metal appearance, metal framed shop front with single glazing.
- 20 Signage zone. Final signage by others & subject to separate planning application by others.
- 21 Dormer window with double glazed painted timber casement window, slated hipped roof, timber structure and lead cheeks.

- 22 Wet cast stone coping.
- 23 Dormer window with double glazed painted timber sliding sash window, slated hipped roof, timber structure and lead cheeks.
- 24 Reclaimed natural stone.
- 25 Lead flashing.
- 26 Louvers, polyester powder coated with bird wire guarding.
- 27 Blank window.
- 28 Painted cast iron ballustrade.
- 29 Brick curved arch.
- 30 Door and window unit, painted timber frame and double glazed.
- 31 Corbelled brick dentil course.
- 32 Double glazed concertina windows with stairless and transom in Bronzed metal finish.
- 33 Rusticated, reconstituted wet-cast stone.
- 34 Painted cast iron grill to opening.
- 35 Existing stone wall and railing.
- 36 Timber framed, double glazed door with Juliet balcony.
- 37 Glass canopy with steel frame.
- 38 Great Tew Ironstone.
- 39 Re-used gate from Market Place entrance to church grounds.
- 40 Painted cast iron balcony.
- 41 Existing boundary wall with new railings.

0 1 2 3 4 5 6 7 8 9 10  
Metres at scale 1:100

This drawing, the work and contents depicted are copyright of Stephen George & Partners and may not be reproduced or made use of, either directly or indirectly without express written consent. All heights, levels, sizes and dimensions to be checked on site before any work is put to hand.



**Kettering Market Place Buildings**  
Sketch Elevation Revisions

Drawing status: Planning  
 Cad reference: 8833-P001  
 Drawn: SC  
 Team: SH  
 Date: 08/02/10  
 Scale: 1:100 at A1  
 Project no: 8833  
 Revision: B

Drawing no: SK-E001-7

Architects | Planners

**STEPHEN GEORGE & PARTNERS**

170 London Road  
 Leicester, LE2 1ND

t: 0116 247 0557 f: 0116 254 1095  
 www.stephengeorge.co.uk