

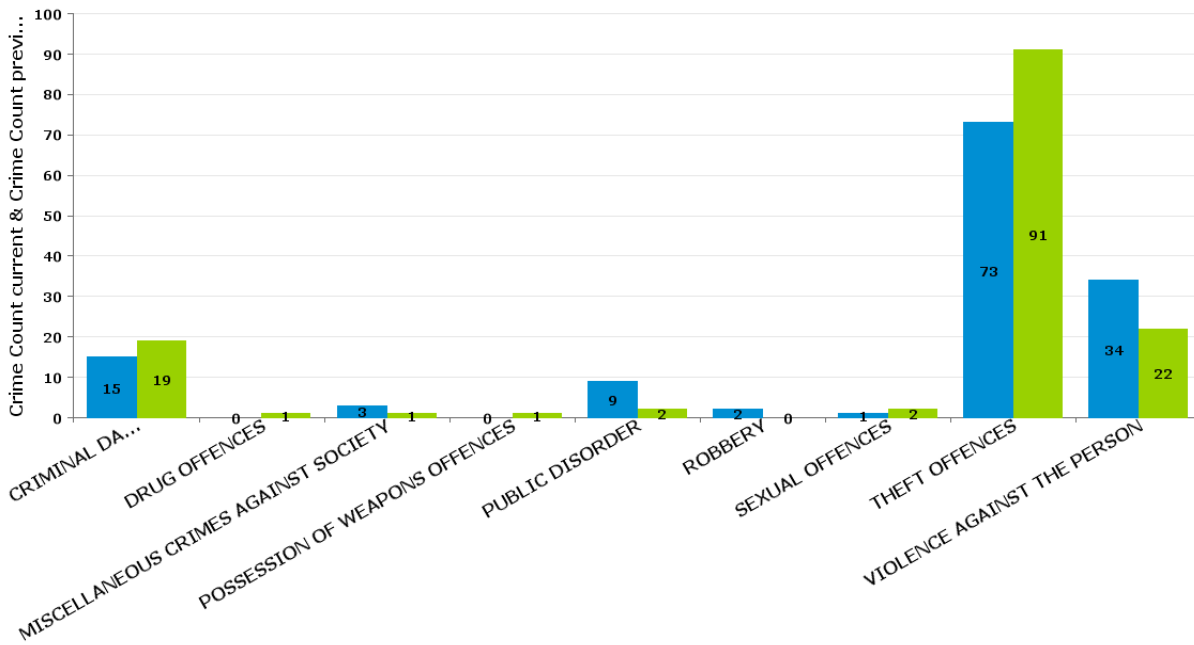
Kettering Rural

QUEEN ELEANOR AND BUCCLEUCH

Crime Group	Current 12 Months	Previous 12 Months	+/- Crime	% Change	Number of Resolved Crimes	Resolution Rate (12 Months)
CRIMINAL DAMAGE & ARSON	15	19	-4	-21.05%	1	6.67%
DRUG OFFENCES	0	1	-1	-100.00%	1	#DIV/0
MISCELLANEOUS CRIMES AGAINST SOCIETY	3	1	2	200.00%	0	0.00%
POSSESSION OF WEAPONS OFFENCES	0	1	-1	-100.00%	0	#DIV/0
PUBLIC DISORDER	9	2	7	350.00%	0	0.00%
ROBBERY	2	0	2	#DIV/0	0	0.00%
SEXUAL OFFENCES	1	2	-1	-50.00%	0	0.00%
THEFT OFFENCES	73	91	-18	-19.78%	3	4.11%
VIOLENCE AGAINST THE PERSON	34	22	12	54.55%	8	23.53%
Sum:	137	139	-2	-1.44%	13	9.49%

Crime

■ Crime Count current ■ Crime Count previous



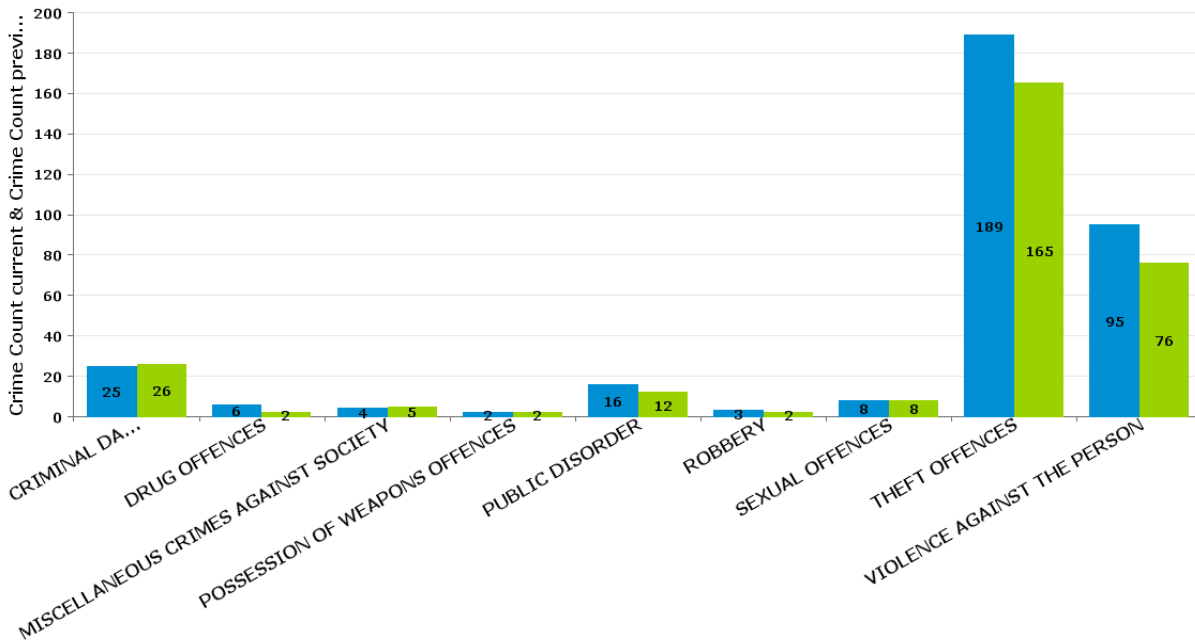
Crime Groups

SLADE

Crime Group	Current 12 Months	Previous 12 Months	+/- Crime	% Change	Number of Resolved Crimes	Resolution Rate (12 Months)
CRIMINAL DAMAGE & ARSON	25	26	-1	-3.85%	4	16.00%
DRUG OFFENCES	6	2	4	200.00%	1	16.67%
MISCELLANEOUS CRIMES AGAINST SOCIETY	4	5	-1	-20.00%	0	0.00%
POSSESSION OF WEAPONS OFFENCES	2	2	0	0.00%	1	50.00%
PUBLIC DISORDER	16	12	4	33.33%	8	50.00%
ROBBERY	3	2	1	50.00%	0	0.00%
SEXUAL OFFENCES	8	8	0	0.00%	1	12.50%
THEFT OFFENCES	189	165	24	14.55%	8	4.23%
VIOLENCE AGAINST THE PERSON	95	76	19	25.00%	9	9.47%
Sum:	348	298	50	16.78%	32	9.20%

Crime

■ Crime Count current ■ Crime Count previous



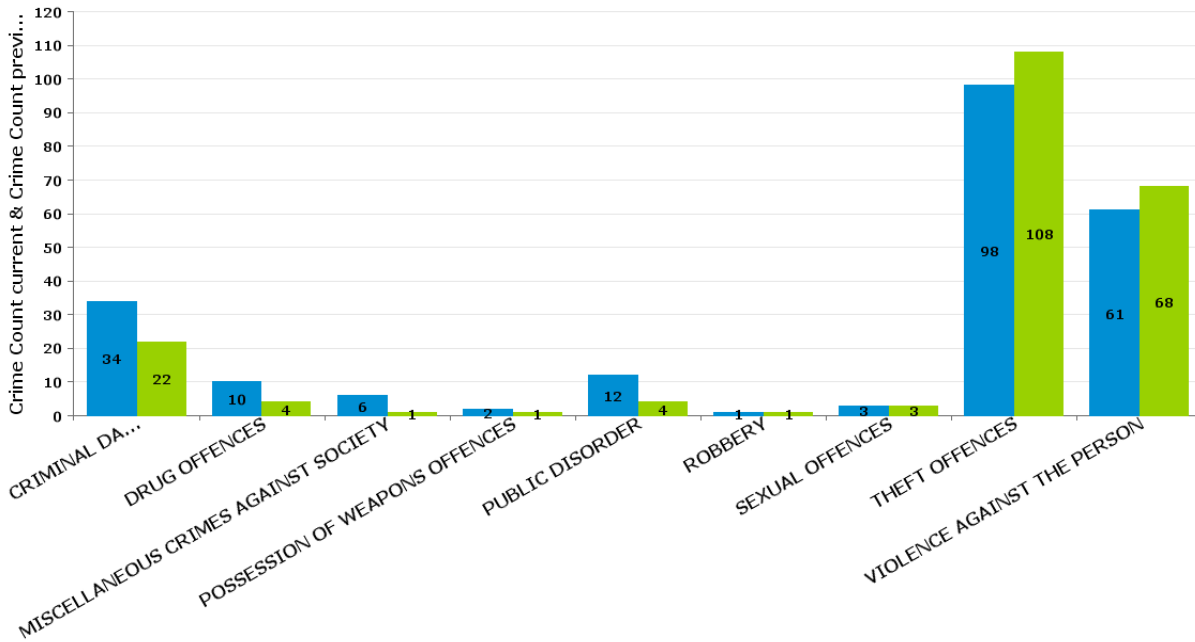
Crime Groups

WELLAND

Crime Group	Current 12 Months	Previous 12 Months	+/- Crime	% Change	Number of Resolved Crimes	Resolution Rate (12 Months)
CRIMINAL DAMAGE & ARSON	34	22	12	54.55%	7	20.59%
DRUG OFFENCES	10	4	6	150.00%	2	20.00%
MISCELLANEOUS CRIMES AGAINST SOCIETY	6	1	5	500.00%	1	16.67%
POSSESSION OF WEAPONS OFFENCES	2	1	1	100.00%	0	0.00%
PUBLIC DISORDER	12	4	8	200.00%	1	8.33%
ROBBERY	1	1	0	0.00%	0	0.00%
SEXUAL OFFENCES	3	3	0	0.00%	0	0.00%
THEFT OFFENCES	98	108	-10	-9.26%	3	3.06%
VIOLENCE AGAINST THE PERSON	61	68	-7	-10.29%	29	47.54%
Sum:	227	212	15	7.08%	43	18.94%

Crime

■ Crime Count current ■ Crime Count previous



Crime Groups