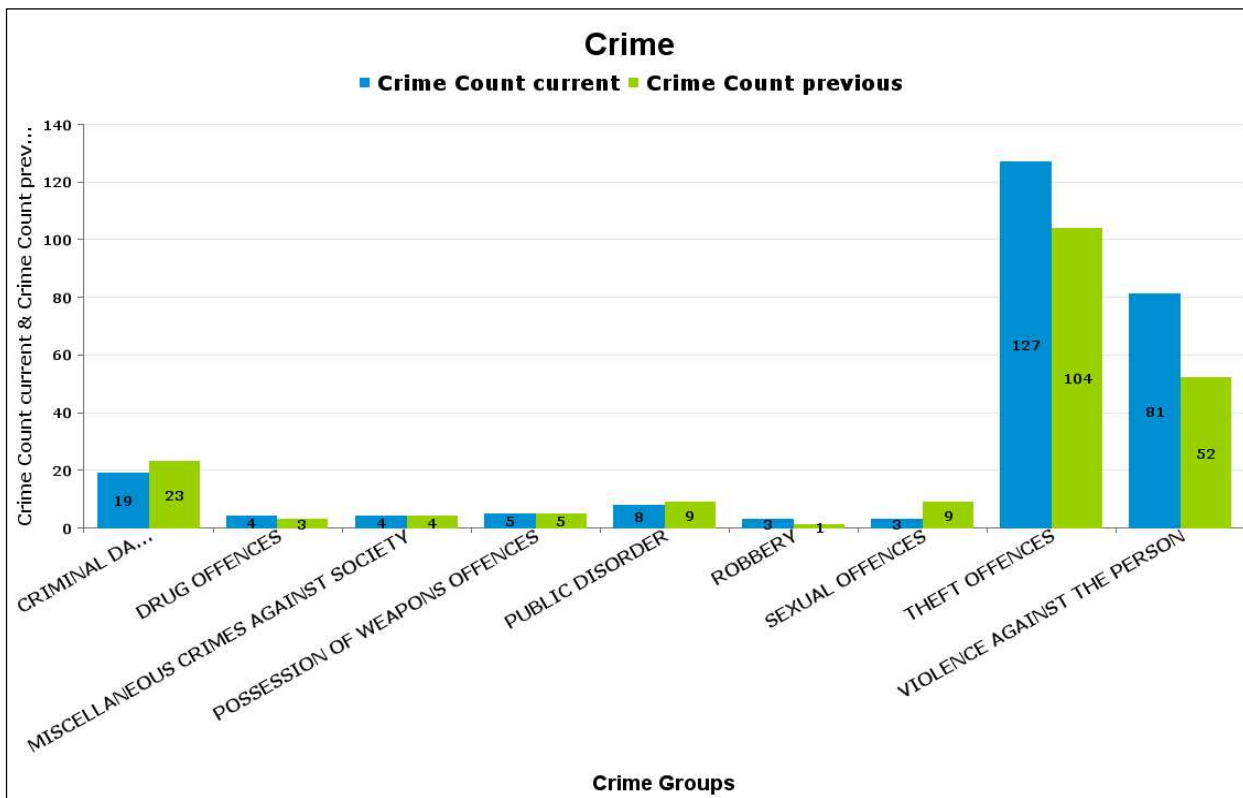


Kettering A6 Towns

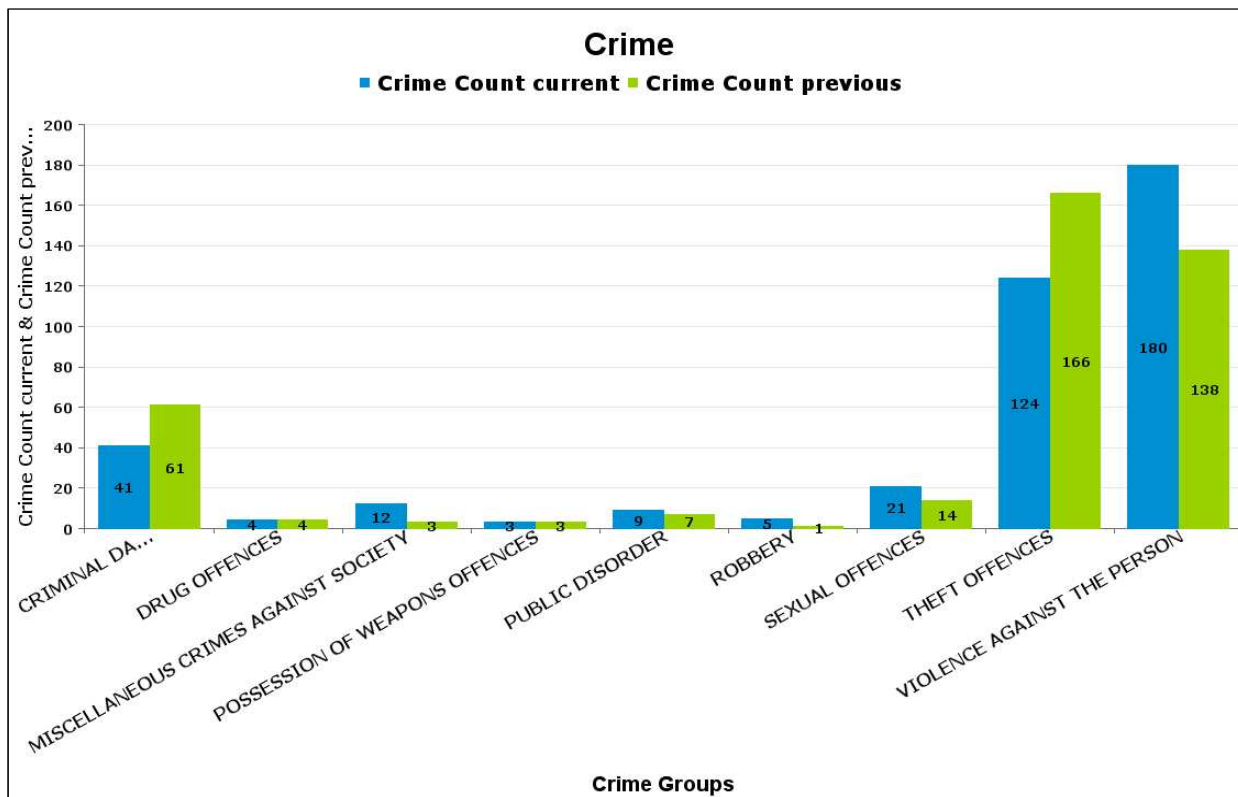
BARTON

Crime Group	Current 12 Months	Previous 12 Months	+/- Crime	% Change	Number of Resolved Crimes	Resolution Rate (12 Months)
CRIMINAL DAMAGE & ARSON	19	23	-4	-17.39%	2	10.53%
DRUG OFFENCES	4	3	1	33.33%	3	75.00%
MISCELLANEOUS CRIMES AGAINST SOCIETY	4	4	0	0.00%	0	0.00%
POSSESSION OF WEAPONS OFFENCES	5	5	0	0.00%	2	40.00%
PUBLIC DISORDER	8	9	-1	-11.11%	0	0.00%
ROBBERY	3	1	2	200.00%	3	100.00%
SEXUAL OFFENCES	3	9	-6	-66.67%	0	0.00%
THEFT OFFENCES	127	104	23	22.12%	7	5.51%
VIOLENCE AGAINST THE PERSON	81	52	29	55.77%	14	17.28%
Sum:	254	210	44	20.95%	31	12.20%



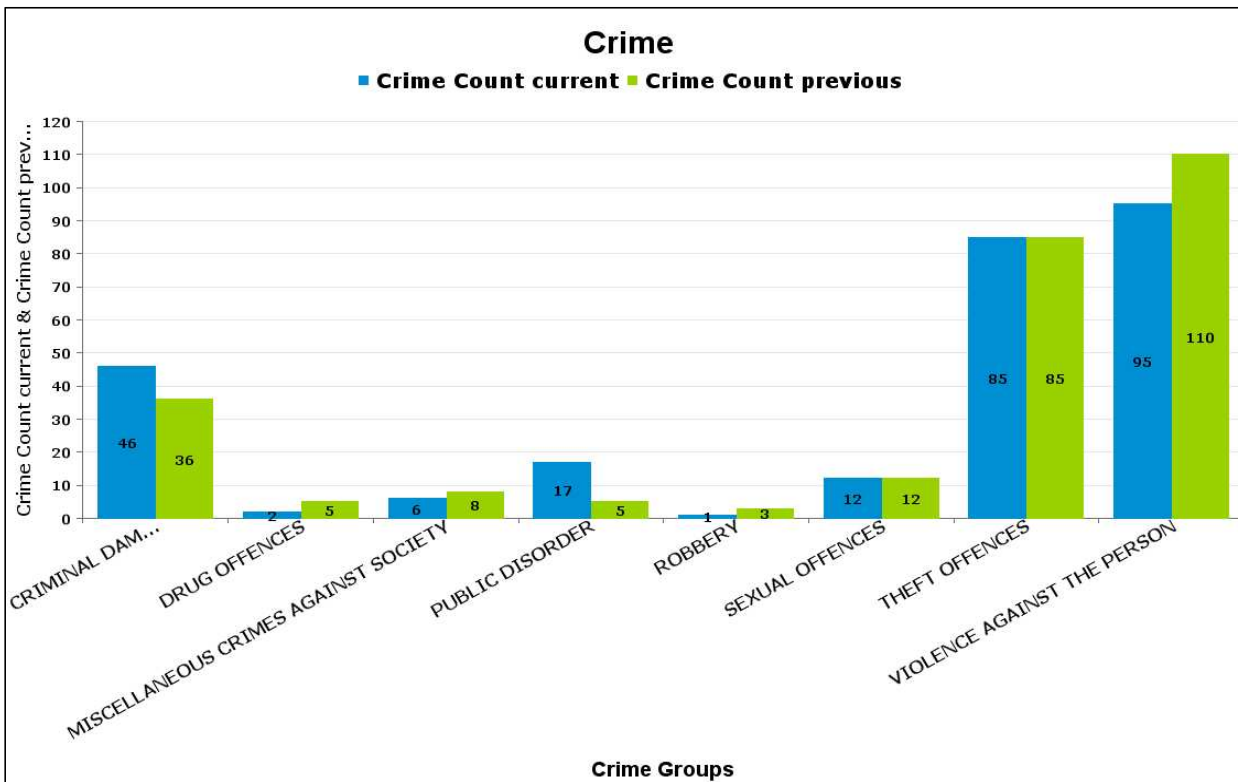
BURTON LATIMER

Crime Group	Current 12 Months	Previous 12 Months	+/- Crime	% Change	Number of Resolved Crimes	Resolution Rate (12 Months)
CRIMINAL DAMAGE & ARSON	41	61	-20	-32.79%	7	17.07%
DRUG OFFENCES	4	4	0	0.00%	3	75.00%
MISCELLANEOUS CRIMES AGAINST SOCIETY	12	3	9	300.00%	1	8.33%
POSSESSION OF WEAPONS OFFENCES	3	3	0	0.00%	0	0.00%
PUBLIC DISORDER	9	7	2	28.57%	1	11.11%
ROBBERY	5	1	4	400.00%	1	20.00%
SEXUAL OFFENCES	21	14	7	50.00%	0	0.00%
THEFT OFFENCES	124	166	-42	-25.30%	20	16.13%
VIOLENCE AGAINST THE PERSON	180	138	42	30.43%	22	12.22%
Sum:	399	397	2	0.50%	55	13.78%



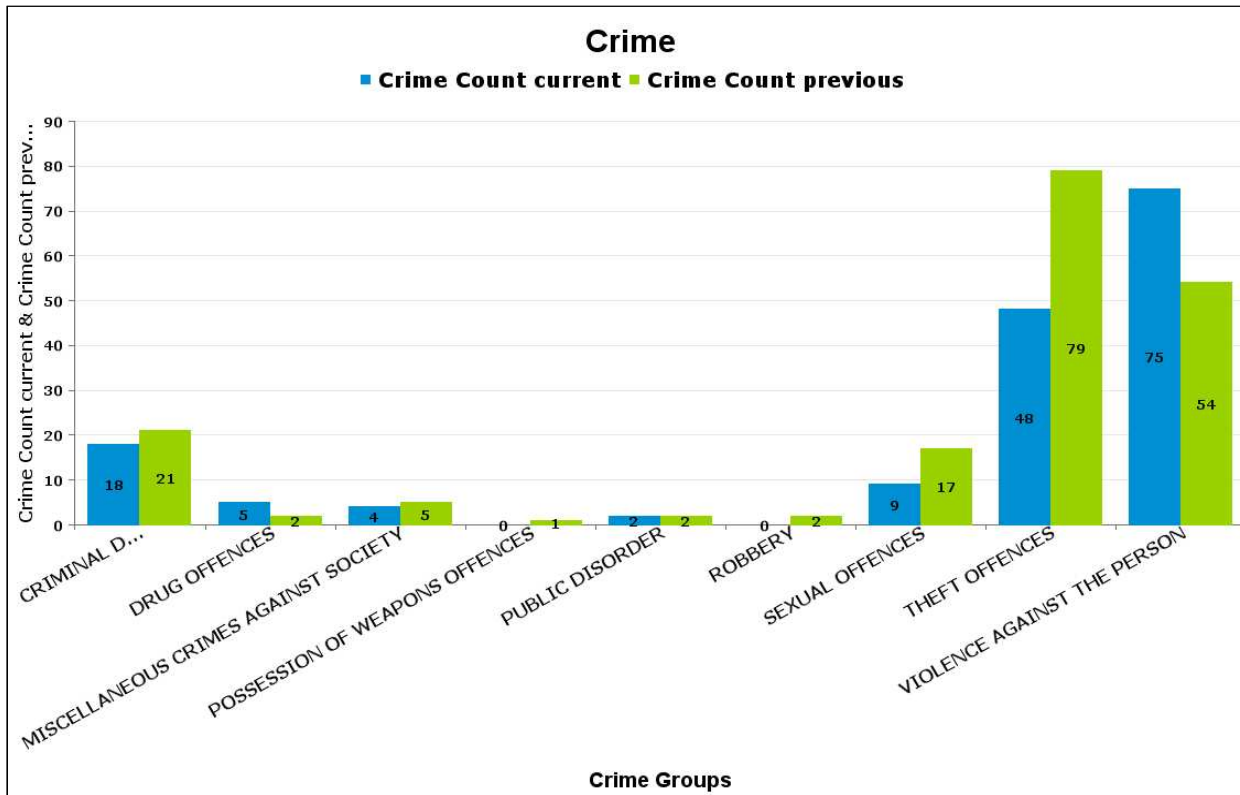
DESBOROUGH LOATLAND

Crime Group	Current 12 Months	Previous 12 Months	+/- Crime	% Change	Number of Resolved Crimes	Resolution Rate (12 Months)
CRIMINAL DAMAGE & ARSON	46	36	10	27.78%	1	2.17%
DRUG OFFENCES	2	5	-3	-60.00%	2	100.00%
MISCELLANEOUS CRIMES AGAINST SOCIETY	6	8	-2	-25.00%	1	16.67%
PUBLIC DISORDER	17	5	12	240.00%	2	11.76%
ROBBERY	1	3	-2	-66.67%	0	0.00%
SEXUAL OFFENCES	12	12	0	0.00%	1	8.33%
THEFT OFFENCES	85	85	0	0.00%	0	0.00%
VIOLENCE AGAINST THE PERSON	95	110	-15	-13.64%	28	29.47%
Sum:	264	264	0	0.00%	35	13.26%



DESBOROUGH ST GILES

Crime Group	Current 12 Months	Previous 12 Months	+/- Crime	% Change	Number of Resolved Crimes	Resolution Rate (12 Months)
CRIMINAL DAMAGE & ARSON	18	21	-3	-14.29%	1	5.56%
DRUG OFFENCES	5	2	3	150.00%	2	40.00%
MISCELLANEOUS CRIMES AGAINST SOCIETY	4	5	-1	-20.00%	1	25.00%
POSSESSION OF WEAPONS OFFENCES	0	1	-1	-100.00%	0	#DIV/0
PUBLIC DISORDER	2	2	0	0.00%	1	50.00%
ROBBERY	0	2	-2	-100.00%	1	#DIV/0
SEXUAL OFFENCES	9	17	-8	-47.06%	3	33.33%
THEFT OFFENCES	48	79	-31	-39.24%	0	0.00%
VIOLENCE AGAINST THE PERSON	75	54	21	38.89%	9	12.00%
Sum:	161	183	-22	-12.02%	18	11.18%



ROTHWELL

Crime Group	Current 12 Months	Previous 12 Months	+/- Crime	% Change	Number of Resolved Crimes	Resolution Rate (12 Months)
CRIMINAL DAMAGE & ARSON	75	72	3	4.17%	11	14.67%
DRUG OFFENCES	10	8	2	25.00%	6	60.00%
MISCELLANEOUS CRIMES AGAINST SOCIETY	17	6	11	183.33%	2	11.76%
POSSESSION OF WEAPONS OFFENCES	10	3	7	233.33%	1	10.00%
PUBLIC DISORDER	20	16	4	25.00%	2	10.00%
ROBBERY	9	3	6	200.00%	0	0.00%
SEXUAL OFFENCES	34	19	15	78.95%	1	2.94%
THEFT OFFENCES	225	274	-49	-17.88%	12	5.33%
VIOLENCE AGAINST THE PERSON	203	141	62	43.97%	25	12.32%
Sum:	603	542	61	11.25%	60	9.95%

