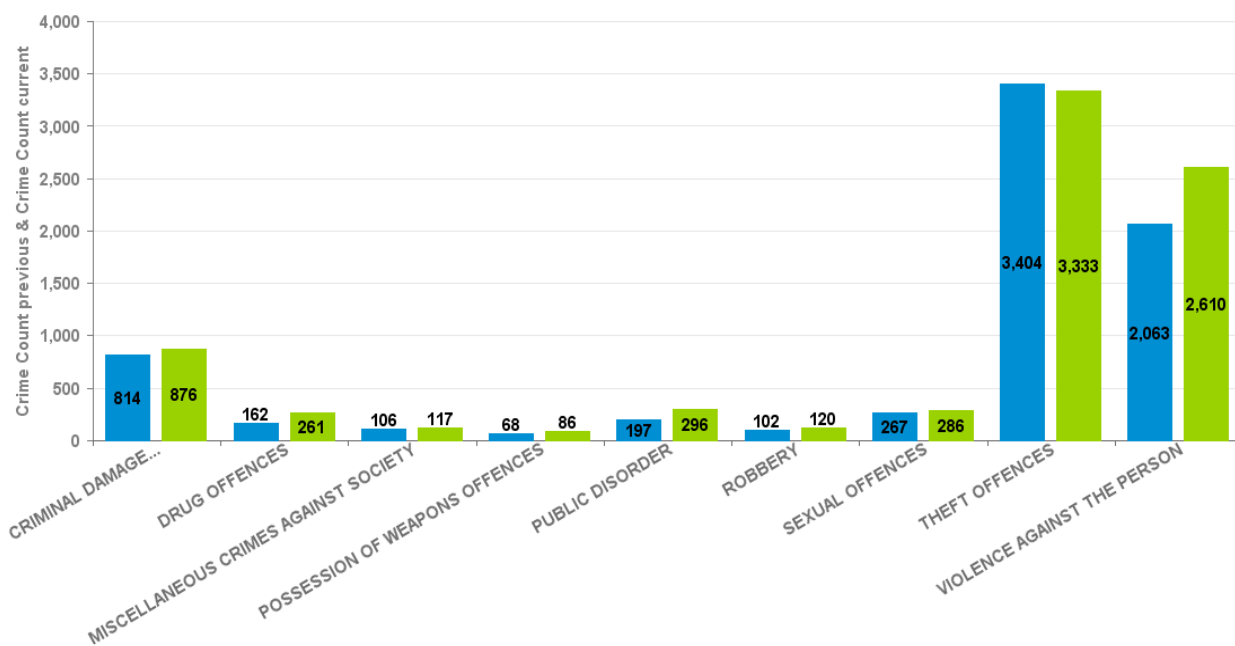


KETTERING BOROUGH

Crime Group	% of Current 12mths Crime Against All Crime	Current 12 mths	Previous 12 mths	+/- Crime	% Change	Number of resolved Crimes	Resolved Rate (past 12mths)
CRIMINAL DAMAGE & ARSON	10.97%	876	814	62	7.62%	114	13.01%
DRUG OFFENCES	3.27%	261	162	99	61.11%	198	75.86%
MISCELLANEOUS CRIMES AGAINST SOCIETY	1.47%	117	106	11	10.38%	11	9.40%
POSSESSION OF WEAPONS OFFENCES	1.08%	86	68	18	26.47%	38	44.19%
PUBLIC DISORDER	3.71%	296	197	99	50.25%	89	30.07%
ROBBERY	1.50%	120	102	18	17.65%	21	17.50%
SEXUAL OFFENCES	3.58%	286	267	19	7.12%	27	9.44%
THEFT OFFENCES	41.74%	3333	3404	-71	-2.09%	271	8.13%
VIOLENCE AGAINST THE PERSON	32.69%	2610	2063	547	26.51%	420	16.09%
				0	-100.00%	3	
Sum:	100.00%	7985	7183	802	11.17%	1192	

All Crime

■ Crime Count previous ■ Crime Count current



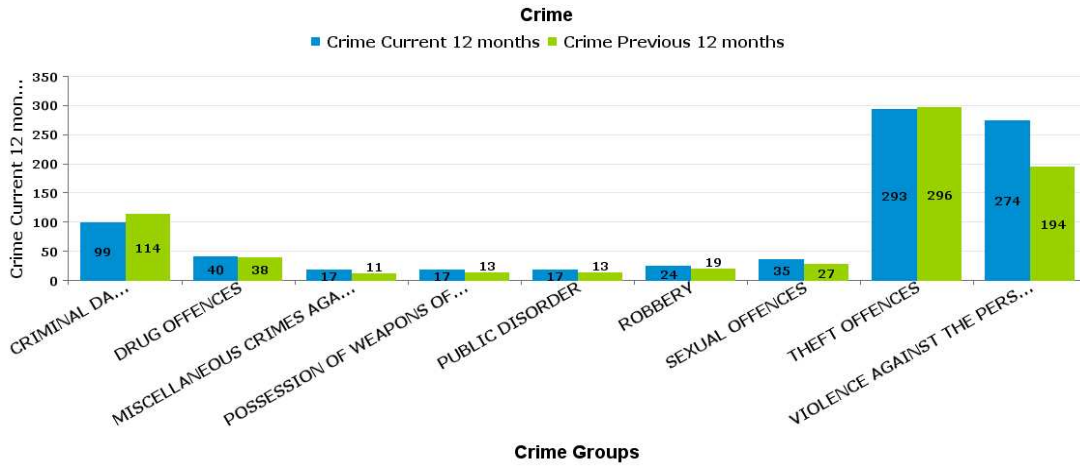
Crime Tree LV2 Desc

Crime Reports by CSP Sector and Ward

KETTERING TOWN

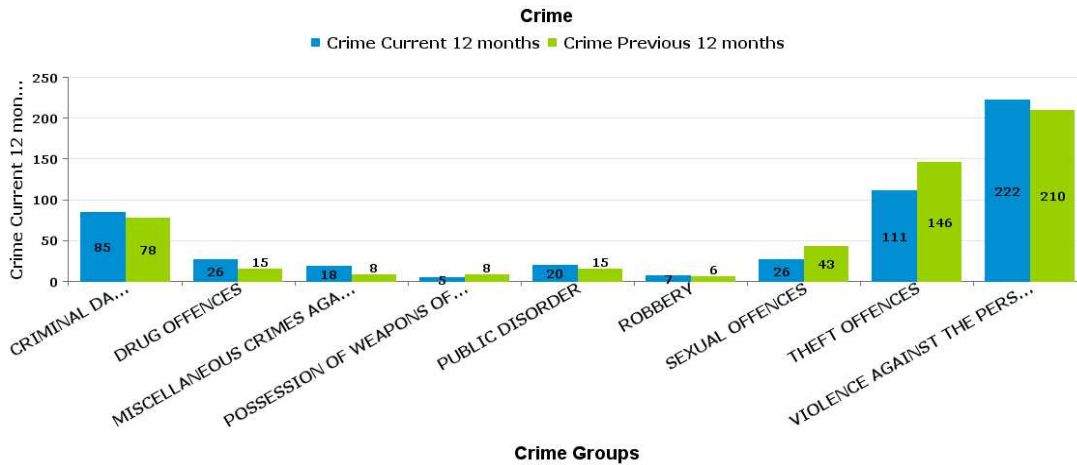
ALL SAINTS

Crime Group	% of Current 12mths Crime Against Total Crime	Current 12 mths	Previous 12 mths	+/- Crime	% Change	Number of resolved Crimes	Resolved Rate (past 12mths)
CRIMINAL DAMAGE & ARSON	12.13%	99	114	-15	-13.16%	6	6.06%
DRUG OFFENCES	4.90%	40	38	2	5.26%	32	80.00%
MISCELLANEOUS CRIMES AGAINST SOCIETY	2.08%	17	11	6	54.55%		
POSSESSION OF WEAPONS OFFENCES	2.08%	17	13	4	30.77%	8	47.06%
PUBLIC DISORDER	2.08%	17	13	4	30.77%	7	41.18%
ROBBERY	2.94%	24	19	5	26.32%	6	25.00%
SEXUAL OFFENCES	4.29%	35	27	8	29.63%	4	11.43%
THEFT OFFENCES	35.91%	293	296	-3	-1.01%	18	6.14%
VIOLENCE AGAINST THE PERSON	33.58%	274	194	80	41.24%	55	20.07%
Sum:	100.00%	816	725	91	12.55%	136	



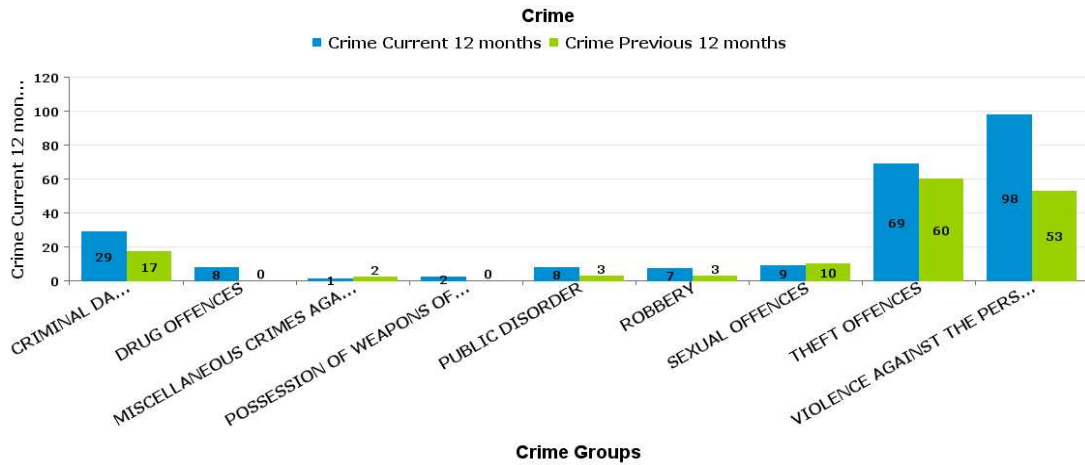
AVONDALE GRANGE

Crime Group	% of Current 12mths Crime Against Total Crime	Current 12 mths	Previous 12 mths	+/- Crime	% Change	Number of resolved Crimes	Resolved Rate (past 12mths)
CRIMINAL DAMAGE & ARSON	16.35%	85	78	7	8.97%	9	10.59%
DRUG OFFENCES	5.00%	26	15	11	73.33%	16	61.54%
MISCELLANEOUS CRIMES AGAINST SOCIETY	3.46%	18	8	10	125.00%	1	5.56%
POSSESSION OF WEAPONS OFFENCES	0.96%	5	8	-3	-37.50%	2	40.00%
PUBLIC DISORDER	3.85%	20	15	5	33.33%	1	5.00%
ROBBERY	1.35%	7	6	1	16.67%	2	28.57%
SEXUAL OFFENCES	5.00%	26	43	-17	-39.53%		
THEFT OFFENCES	21.35%	111	146	-35	-23.97%	11	9.91%
VIOLENCE AGAINST THE PERSON	42.69%	222	210	12	5.71%	31	13.96%
Sum:	100.00%	520	529	-9	-1.70%	73	



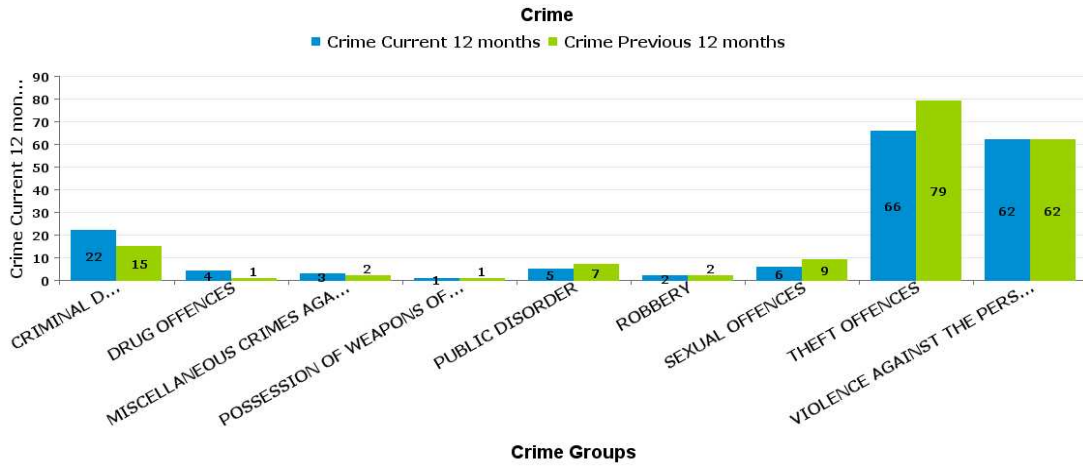
BRAMBLESIDE

Crime Group	% of Current 12mths Crime Against Total Crime	Current 12 mths	Previous 12 mths	+/- Crime	% Change	Number of resolved Crimes	Resolved Rate (past 12mths)
CRIMINAL DAMAGE & ARSON	12.55%	29	17	12	70.59%	2	6.90%
DRUG OFFENCES	3.46%	8	0	8	-100.00%	7	87.50%
MISCELLANEOUS CRIMES AGAINST SOCIETY	0.43%	1	2	-1	-50.00%		
POSSESSION OF WEAPONS OFFENCES	0.87%	2	0	2	-100.00%	1	50.00%
PUBLIC DISORDER	3.46%	8	3	5	166.67%	4	50.00%
ROBBERY	3.03%	7	3	4	133.33%		
SEXUAL OFFENCES	3.90%	9	10	-1	-10.00%	1	11.11%
THEFT OFFENCES	29.87%	69	60	9	15.00%		
VIOLENCE AGAINST THE PERSON	42.42%	98	53	45	84.91%	10	10.20%
Sum:	100.00%	231	148	83	56.08%	25	



ISE LODGE

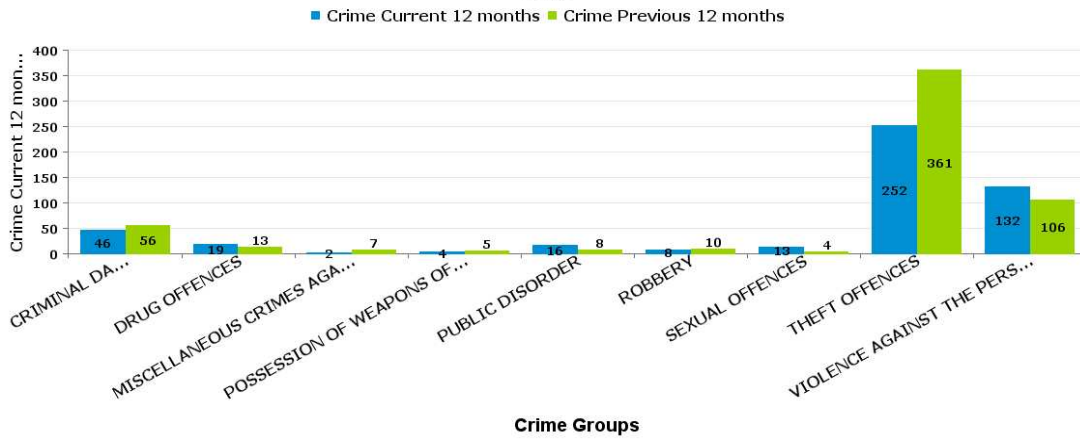
Crime Group	% of Current 12mths Crime Against Total Crime	Current 12 mths	Previous 12 mths	+/- Crime	% Change	Number of resolved Crimes	Resolved Rate (past 12mths)
CRIMINAL DAMAGE & ARSON	12.87%	22	15	7	46.67%	5	22.73%
DRUG OFFENCES	2.34%	4	1	3	300.00%	3	75.00%
MISCELLANEOUS CRIMES AGAINST SOCIETY	1.75%	3	2	1	50.00%	1	33.33%
POSSESSION OF WEAPONS OFFENCES	0.58%	1	1	0	0.00%	2	200.00%
PUBLIC DISORDER	2.92%	5	7	-2	-28.57%	3	60.00%
ROBBERY	1.17%	2	2	0	0.00%		
SEXUAL OFFENCES	3.51%	6	9	-3	-33.33%		
THEFT OFFENCES	38.60%	66	79	-13	-16.46%	7	10.61%
VIOLENCE AGAINST THE PERSON	36.26%	62	62	0	0.00%	17	27.42%
Sum:	100.00%	171	178	-7	-3.93%	38	



NORTHFIELD

Crime Group	% of Current 12mths Crime Against Total Crime	Current 12 mths	Previous 12 mths	+/- Crime	% Change	Number of resolved Crimes	Resolved Rate (past 12mths)
CRIMINAL DAMAGE & ARSON	9.35%	46	56	-10	-17.86%	8	17.39%
DRUG OFFENCES	3.86%	19	13	6	46.15%	15	78.95%
MISCELLANEOUS CRIMES AGAINST SOCIETY	0.41%	2	7	-5	-71.43%		
POSSESSION OF WEAPONS OFFENCES	0.81%	4	5	-1	-20.00%	1	25.00%
PUBLIC DISORDER	3.25%	16	8	8	100.00%	3	18.75%
ROBBERY	1.63%	8	10	-2	-20.00%	2	25.00%
SEXUAL OFFENCES	2.64%	13	4	9	225.00%	1	7.69%
THEFT OFFENCES	51.22%	252	361	-109	-30.19%	28	11.11%
VIOLENCE AGAINST THE PERSON	26.83%	132	106	26	24.53%	31	23.48%
Sum:	100.00%	492	570	-78	-13.68%	89	

Crime

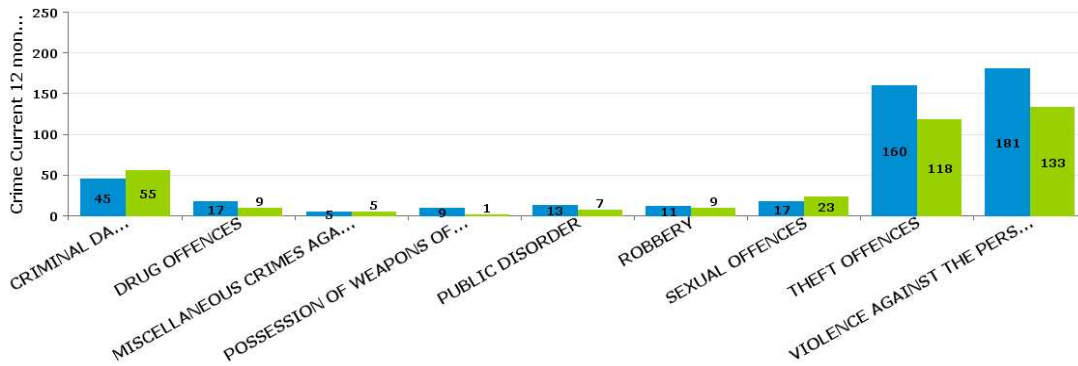


PIPERS HILL

Crime Group	% of Current 12mths Crime Against Total Crime	Current 12 mths	Previous 12 mths	+/- Crime	% Change	Number of resolved Crimes	Resolved Rate (past 12mths)
CRIMINAL DAMAGE & ARSON	9.83%	45	55	-10	-18.18%	7	15.56%
DRUG OFFENCES	3.71%	17	9	8	88.89%	11	64.71%
MISCELLANEOUS CRIMES AGAINST SOCIETY	1.09%	5	5	0	0.00%	1	20.00%
POSSESSION OF WEAPONS OFFENCES	1.97%	9	1	8	800.00%	4	44.44%
PUBLIC DISORDER	2.84%	13	7	6	85.71%	2	15.38%
ROBBERY	2.40%	11	9	2	22.22%	1	9.09%
SEXUAL OFFENCES	3.71%	17	23	-6	-26.09%	1	5.88%
THEFT OFFENCES	34.93%	160	118	42	35.59%	12	7.50%
VIOLENCE AGAINST THE PERSON	39.52%	181	133	48	36.09%	16	8.84%
Sum:	100.00%	458	360	98	27.22%	55	

Crime

■ Crime Current 12 months ■ Crime Previous 12 months

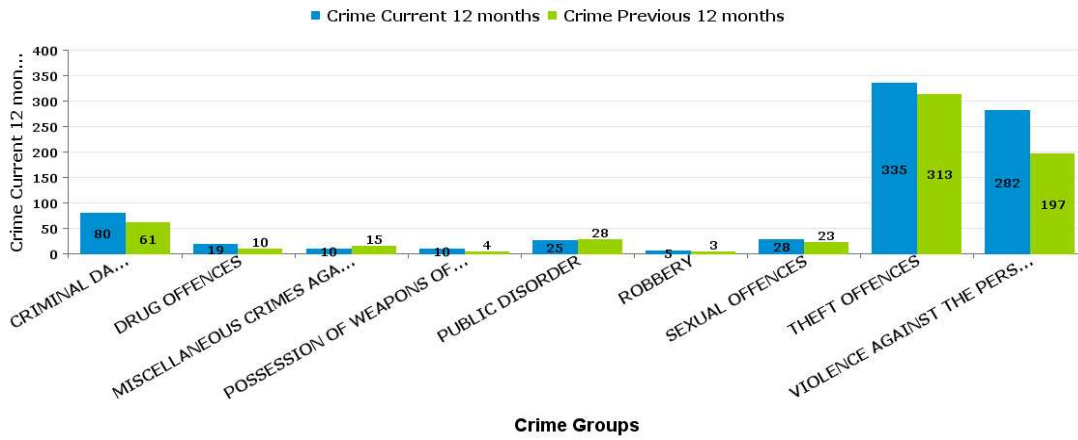


Crime Groups

ST MICHAELS AND WICKSTEED

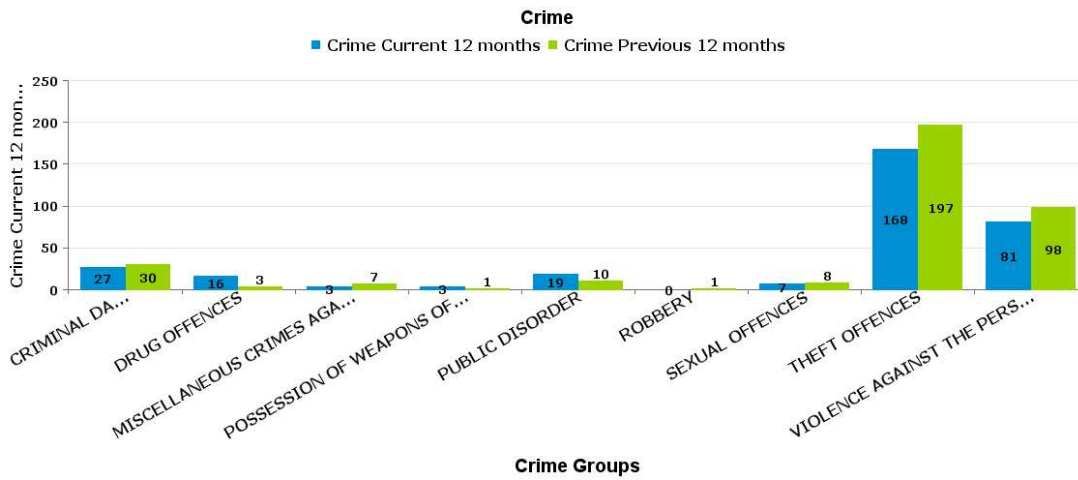
Crime Group	% of Current 12mths Crime Against Total Crime	Current 12 mths	Previous 12 mths	+/- Crime	% Change	Number of resolved Crimes	Resolved Rate (past 12mths)
CRIMINAL DAMAGE & ARSON	10.08%	80	61	19	31.15%	6	7.50%
DRUG OFFENCES	2.39%	19	10	9	90.00%	16	84.21%
MISCELLANEOUS CRIMES AGAINST SOCIETY	1.26%	10	15	-5	-33.33%	3	30.00%
POSSESSION OF WEAPONS OFFENCES	1.26%	10	4	6	150.00%	5	50.00%
PUBLIC DISORDER	3.15%	25	28	-3	-10.71%	7	28.00%
ROBBERY	0.63%	5	3	2	66.67%		
SEXUAL OFFENCES	3.53%	28	23	5	21.74%	4	14.29%
THEFT OFFENCES	42.19%	335	313	22	7.03%	18	5.37%
VIOLENCE AGAINST THE PERSON	35.52%	282	197	85	43.15%	50	17.73%
Sum:	100.00%	794	654	140	21.41%	109	

Crime



ST PETERS

Crime Group	% of Current 12mths Crime Against Total Crime	Current 12 mths	Previous 12 mths	+/- Crime	% Change	Number of resolved Crimes	Resolved Rate (past 12mths)
CRIMINAL DAMAGE & ARSON	8.33%	27	30	-3	-10.00%	6	22.22%
DRUG OFFENCES	4.94%	16	3	13	433.33%	10	62.50%
MISCELLANEOUS CRIMES AGAINST SOCIETY	0.93%	3	7	-4	-57.14%	1	33.33%
POSSESSION OF WEAPONS OFFENCES	0.93%	3	1	2	200.00%	1	33.33%
PUBLIC DISORDER	5.86%	19	10	9	90.00%	5	26.32%
ROBBERY		0	1	-1	-100.00%	1	
SEXUAL OFFENCES	2.16%	7	8	-1	-12.50%	3	42.86%
THEFT OFFENCES	51.85%	168	197	-29	-14.72%	11	6.55%
VIOLENCE AGAINST THE PERSON	25.00%	81	98	-17	-17.35%	23	28.40%
Sum:	100.00%	324	355	-31	-8.73%	61	



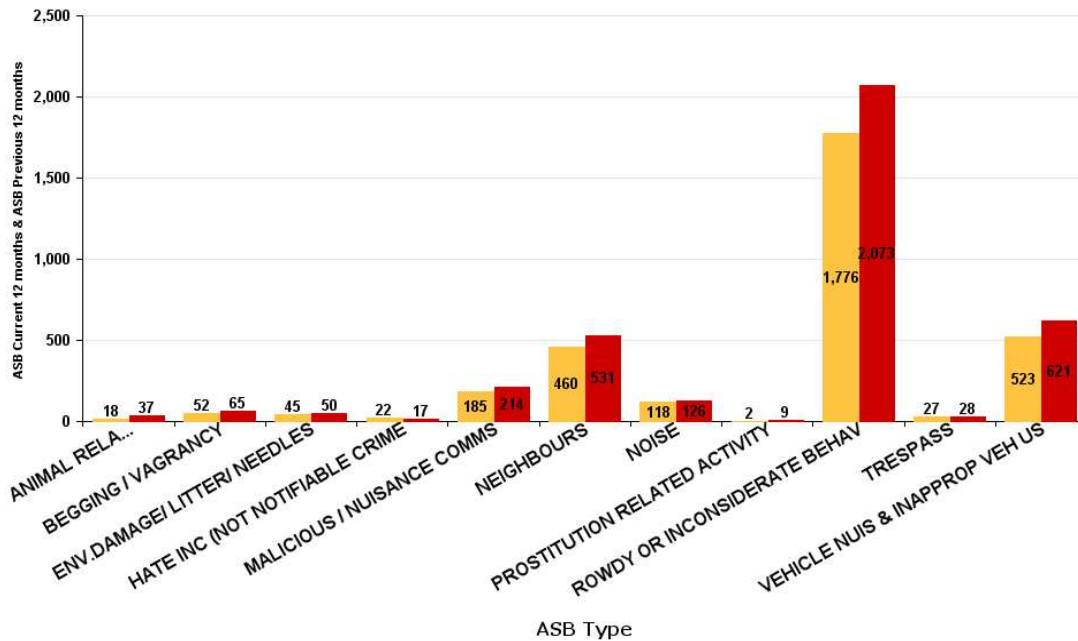
ASB Reports by CSP Sector and Ward

KETTERING BOROUGH ASB

ASB Type	Current 12 mths	Previous 12 mths	+/- Crime	% Change
ANIMAL RELATED INC ANTI-SOCIAL	18	37	-19	-51.35%
BEGGING / VAGRANCY	52	65	-13	-20.00%
ENV.DAMAGE/ LITTER/ NEEDLES	45	50	-5	-10.00%
HATE INC (NOT NOTIFIABLE CRIME)	22	17	5	29.41%
MALICIOUS / NUISANCE COMMS	185	214	-29	-13.55%
NEIGHBOURS	460	531	-71	-13.37%
NOISE	118	126	-8	-6.35%
PROSTITUTION RELATED ACTIVITY	2	9	-7	-77.78%
ROWDY OR INCONSIDERATE BEHAV	1776	2073	-297	-14.33%
TRESPASS	27	28	-1	-3.57%
VEHICLE NUIS & INAPPROP VEH US	523	621	-98	-15.78%
Sum:	3228	3771	-543	-14.40%

ASB

ASB Current 12 months ASB Previous 12 months

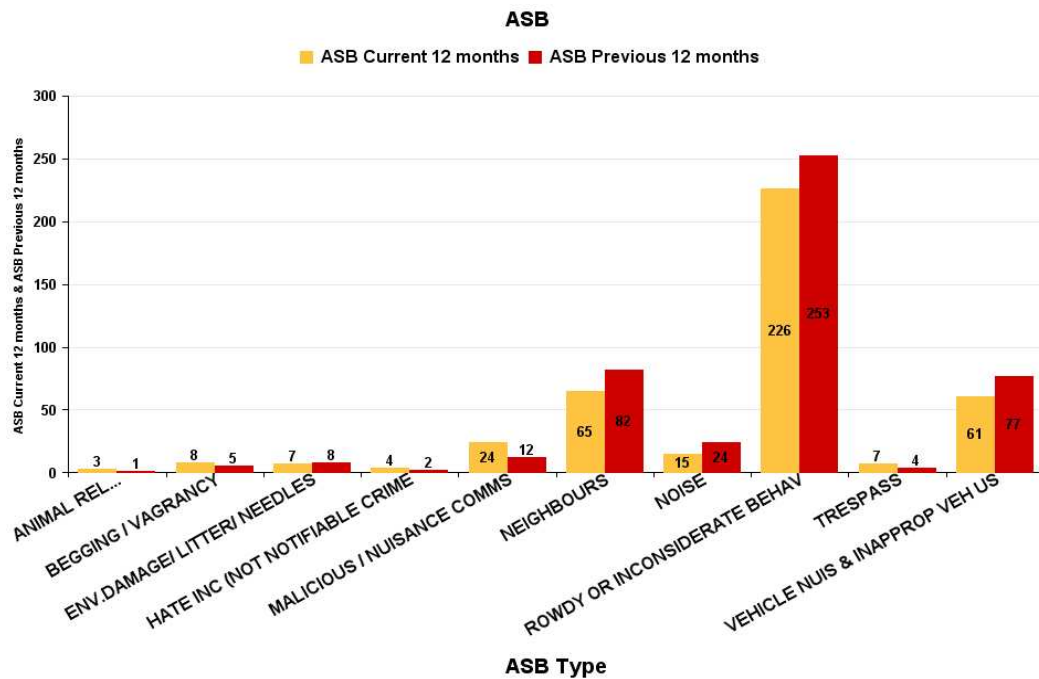


ASB Reports by CSP Sector and Ward

KETTERING TOWN ASB

All Saints

ASB Type	Current 12 Months 2018-01 2018-12	Previous 12 Months 2017-01 2017-12	+/- Crime	% Change
ANIMAL RELATED INC ANTI-SOCIAL	3	1	2	200.00%
BEGGING / VAGRANCY	8	5	3	60.00%
ENV.DAMAGE/ LITTER/ NEEDLES	7	8	-1	-12.50%
HATE INC (NOT NOTIFIABLE CRIME	4	2	2	100.00%
MALICIOUS / NUISANCE COMMS	24	12	12	100.00%
NEIGHBOURS	65	82	-17	-20.73%
NOISE	15	24	-9	-37.50%
ROWDY OR INCONSIDERATE BEHAV	226	253	-27	-10.67%
TRESPASS	7	4	3	75.00%
VEHICLE NUIS & INAPPROP VEH US	61	77	-16	-20.78%
Sum:	420	468	-48	-10.26%

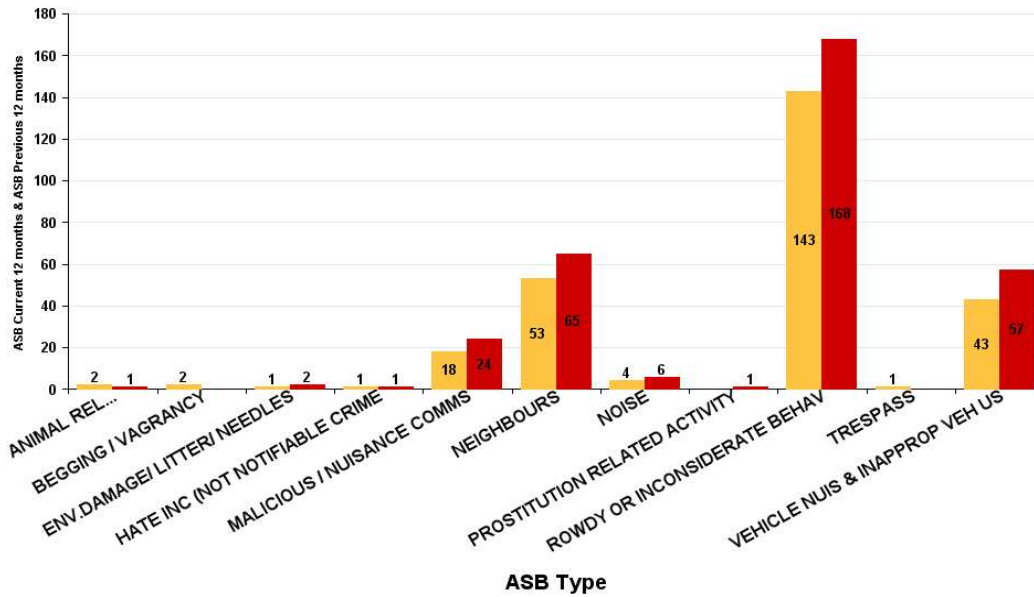


Avondale Grange

ASB Type	Current 12 Months 2018-01 2018-12	Previous 12 Months 2017-01 2017-12	+/- Crime	% Change
ANIMAL RELATED INC ANTI-SOCIAL	2	1	1	100.00%
BEGGING / VAGRANCY	2		2	-100.00%
ENV.DAMAGE/ LITTER/ NEEDLES	1	2	-1	-50.00%
HATE INC (NOT NOTIFIABLE CRIME	1	1	0	0.00%
MALICIOUS / NUISANCE COMMS	18	24	-6	-25.00%
NEIGHBOURS	53	65	-12	-18.46%
NOISE	4	6	-2	-33.33%
PROSTITUTION RELATED ACTIVITY		1	-1	-100.00%
ROWDY OR INCONSIDERATE BEHAV	143	168	-25	-14.88%
TRESPASS	1		1	-100.00%
VEHICLE NUIS & INAPPROP VEH US	43	57	-14	-24.56%
Sum:	268	325	-57	-17.54%

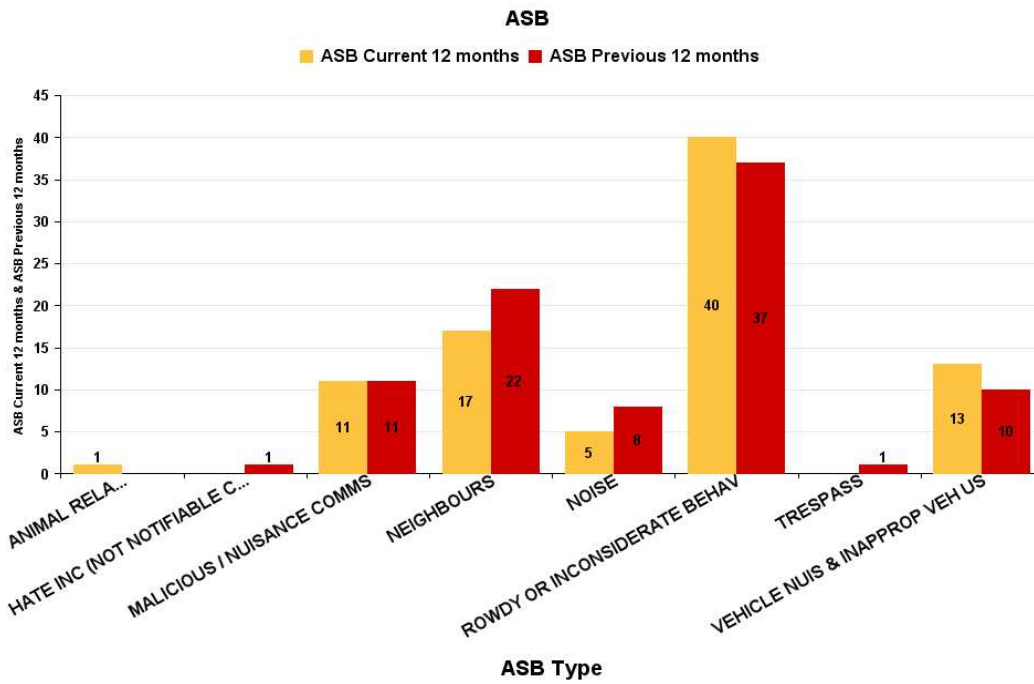
ASB

■ ASB Current 12 months ■ ASB Previous 12 months



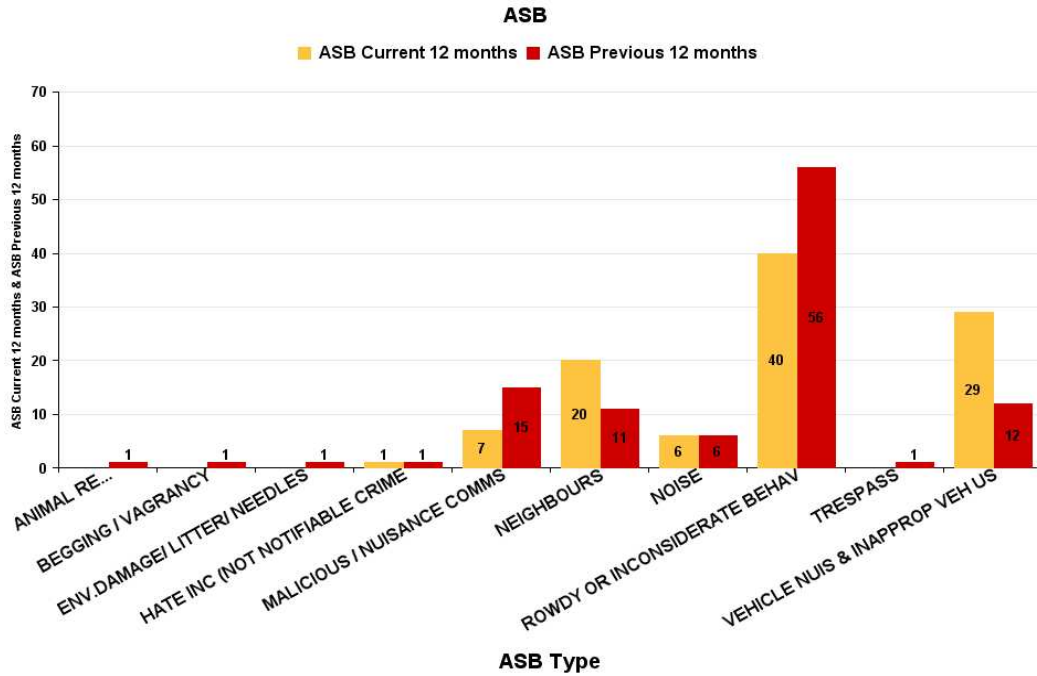
Brambleside

ASB Type	Current 12 Months 2018-01 2018-12	Previous 12 Months 2017-01 2017-12	+/- Crime	% Change
ANIMAL RELATED INC ANTI-SOCIAL	1		1	-100.00%
HATE INC (NOT NOTIFIABLE CRIME		1	-1	-100.00%
MALICIOUS / NUISANCE COMMS	11	11	0	0.00%
NEIGHBOURS	17	22	-5	-22.73%
NOISE	5	8	-3	-37.50%
ROWDY OR INCONSIDERATE BEHAV	40	37	3	8.11%
TRESPASS		1	-1	-100.00%
VEHICLE NUIS & INAPPROP VEH US	13	10	3	30.00%
Sum:	87	90	-3	-3.33%



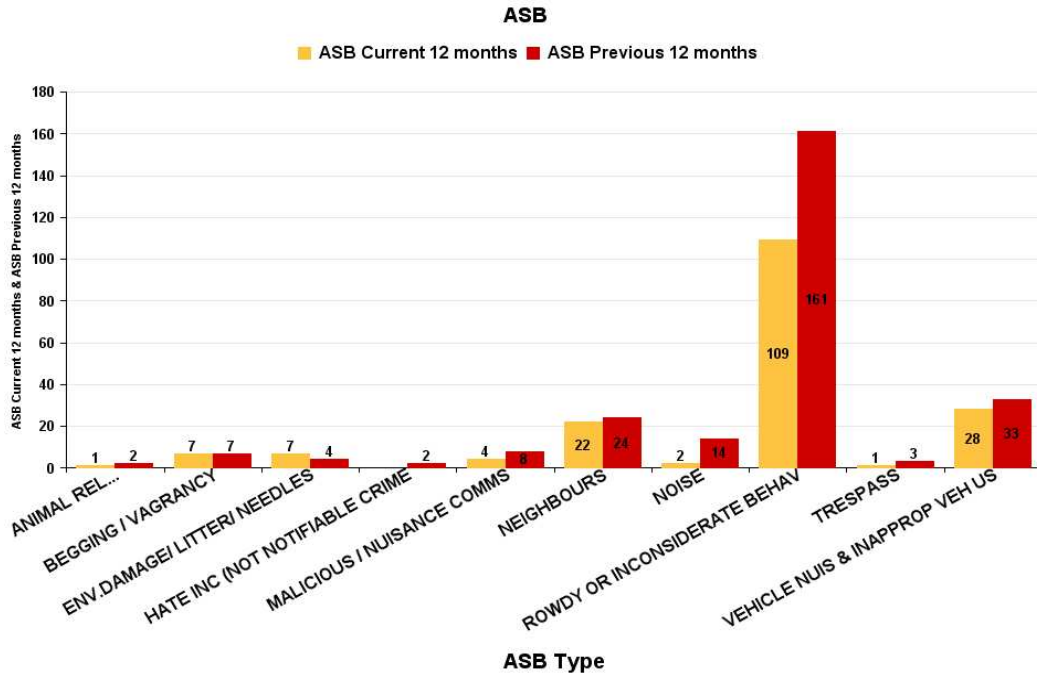
Ise Lodge

ASB Type	Current 12 Months 2018-01 2018-12	Previous 12 Months 2017-01 2017-12	+/- Crime	% Change
ANIMAL RELATED INC ANTI-SOCIAL		1	-1	-100.00%
BEGGING / VAGRANCY		1	-1	-100.00%
ENV.DAMAGE/ LITTER/ NEEDLES		1	-1	-100.00%
HATE INC (NOT NOTIFIABLE CRIME	1	1	0	0.00%
MALICIOUS / NUISANCE COMMS	7	15	-8	-53.33%
NEIGHBOURS	20	11	9	81.82%
NOISE	6	6	0	0.00%
ROWDY OR INCONSIDERATE BEHAV	40	56	-16	-28.57%
TRESPASS		1	-1	-100.00%
VEHICLE NUIS & INAPPROP VEH US	29	12	17	141.67%
Sum:	103	105	-2	-1.90%



Northfield

ASB Type	Current 12 Months 2018-01 2018-12	Previous 12 Months 2017-01 2017-12	+/- Crime	% Change
ANIMAL RELATED INC ANTI-SOCIAL	1	2	-1	-50.00%
BEGGING / VAGRANCY	7	7	0	0.00%
ENV.DAMAGE/ LITTER/ NEEDLES	7	4	3	75.00%
HATE INC (NOT NOTIFIABLE CRIME		2	-2	-100.00%
MALICIOUS / NUISANCE COMMS	4	8	-4	-50.00%
NEIGHBOURS	22	24	-2	-8.33%
NOISE	2	14	-12	-85.71%
ROWDY OR INCONSIDERATE BEHAV	109	161	-52	-32.30%
TRESPASS	1	3	-2	-66.67%
VEHICLE NUIS & INAPPROP VEH US	28	33	-5	-15.15%
Sum:	181	258	-77	-29.84%

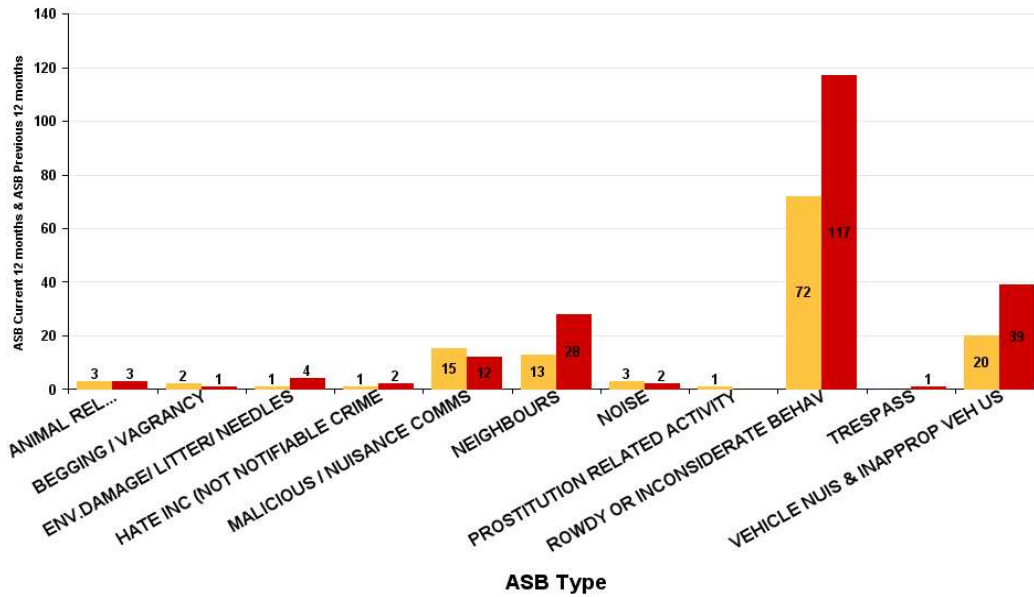


Pipers Hill

ASB Type	Current 12 Months 2018-01 2018-12	Previous 12 Months 2017-01 2017-12	+/- Crime	% Change
ANIMAL RELATED INC ANTI-SOCIAL	3	3	0	0.00%
BEGGING / VAGRANCY	2	1	1	100.00%
ENV.DAMAGE/ LITTER/ NEEDLES	1	4	-3	-75.00%
HATE INC (NOT NOTIFIABLE CRIME	1	2	-1	-50.00%
MALICIOUS / NUISANCE COMMS	15	12	3	25.00%
NEIGHBOURS	13	28	-15	-53.57%
NOISE	3	2	1	50.00%
PROSTITUTION RELATED ACTIVITY	1		1	-100.00%
ROWDY OR INCONSIDERATE BEHAV	72	117	-45	-38.46%
TRESPASS		1	-1	-100.00%
VEHICLE NUIS & INAPPROP VEH US	20	39	-19	-48.72%
Sum:	131	209	-78	-37.32%

ASB

■ ASB Current 12 months ■ ASB Previous 12 months

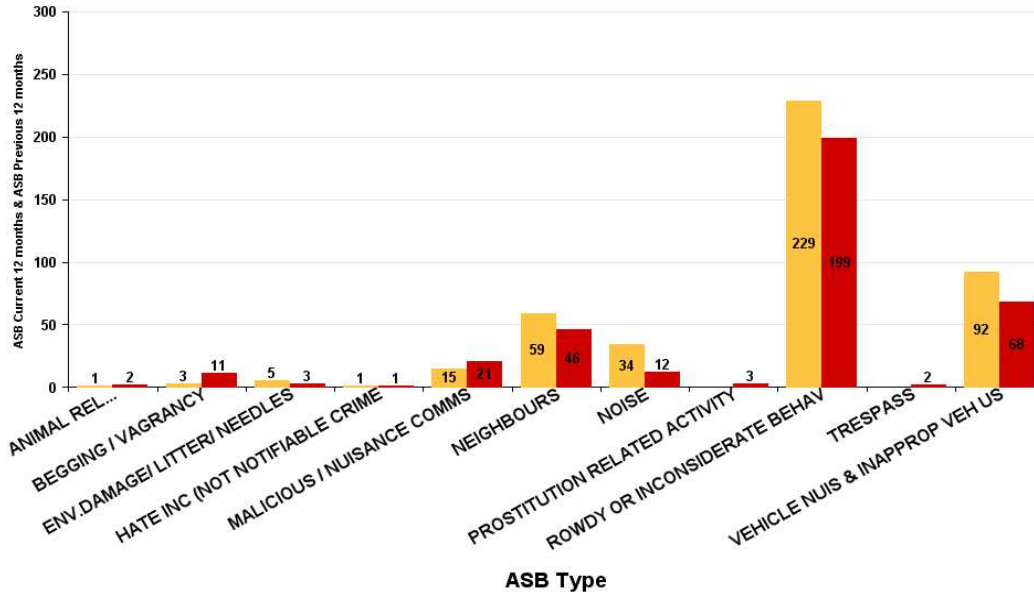


St Michaels and Wicksteed

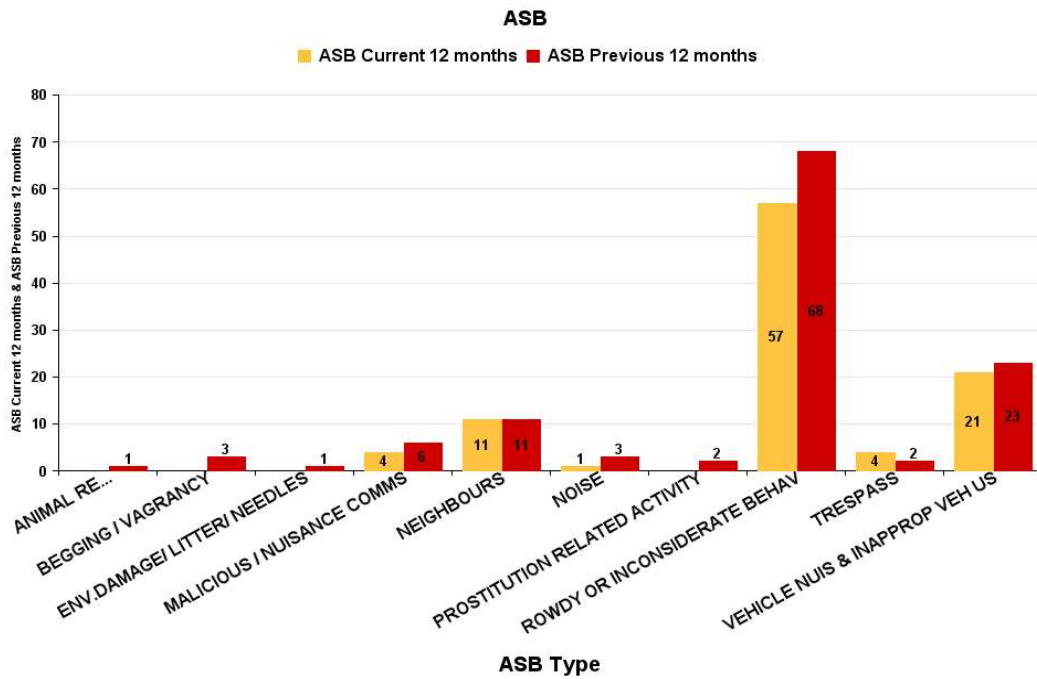
ASB Type	Current 12 Months 2018-01 2018-12	Previous 12 Months 2017-01 2017-12	+/- Crime	% Change
ANIMAL RELATED INC ANTI-SOCIAL	1	2	-1	-50.00%
BEGGING / VAGRANCY	3	11	-8	-72.73%
ENV.DAMAGE/ LITTER/ NEEDLES	5	3	2	66.67%
HATE INC (NOT NOTIFIABLE CRIME	1	1	0	0.00%
MALICIOUS / NUISANCE COMMS	15	21	-6	-28.57%
NEIGHBOURS	59	46	13	28.26%
NOISE	34	12	22	183.33%
PROSTITUTION RELATED ACTIVITY		3	-3	-100.00%
ROWDY OR INCONSIDERATE BEHAV	229	199	30	15.08%
TRESPASS		2	-2	-100.00%
VEHICLE NUIS & INAPPROP VEH US	92	68	24	35.29%
Sum:	439	368	71	19.29%

ASB

■ ASB Current 12 months ■ ASB Previous 12 months



ASB Type	Current 12 Months 2018-01 2018-12	Previous 12 Months 2017-01 2017-12	+/- Crime	% Change
ANIMAL RELATED INC ANTI-SOCIAL		1	-1	-100.00%
BEGGING / VAGRANCY		3	-3	-100.00%
ENV.DAMAGE/ LITTER/ NEEDLES		1	-1	-100.00%
MALICIOUS / NUISANCE COMMS	4	6	-2	-33.33%
NEIGHBOURS	11	11	0	0.00%
NOISE	1	3	-2	-66.67%
PROSTITUTION RELATED ACTIVITY		2	-2	-100.00%
ROWDY OR INCONSIDERATE BEHAV	57	68	-11	-16.18%
TRESPASS	4	2	2	100.00%
VEHICLE NUIS & INAPPROP VEH US	21	23	-2	-8.70%
Sum:	98	120	-22	-18.33%



ASB Type	Current 12 Months 2018-01 2018-12	Previous 12 Months 2017-01 2017-12	+/- Crime	% Change
ANIMAL RELATED INC ANTI-SOCIAL	1	2	-1	-50.00%
BEGGING / VAGRANCY	28	35	-7	-20.00%
ENV.DAMAGE/ LITTER/ NEEDLES	13	10	3	30.00%
HATE INC (NOT NOTIFIABLE CRIME	9	4	5	125.00%
MALICIOUS / NUISANCE COMMS	21	21	0	0.00%
NEIGHBOURS	41	76	-35	-46.05%
NOISE	19	32	-13	-40.63%
PROSTITUTION RELATED ACTIVITY	1	1	0	0.00%
ROWDY OR INCONSIDERATE BEHAV	396	560	-164	-29.29%
TRESPASS	5	5	0	0.00%
VEHICLE NUIS & INAPPROP VEH US	39	66	-27	-40.91%
Sum:	573	812	-239	-29.43%

ASB

ASB Current 12 months ASB Previous 12 months

