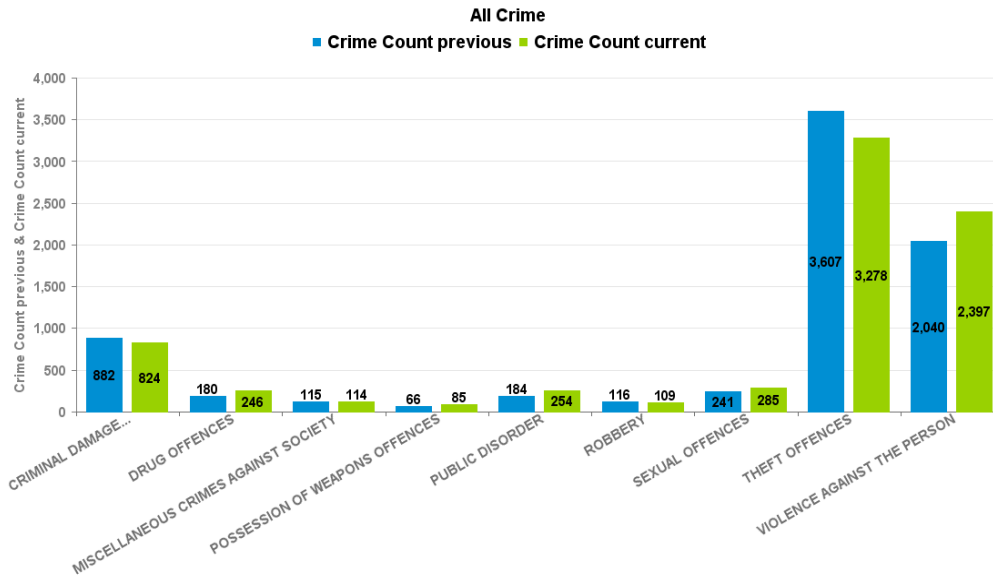


# KETTERING BOROUGH

Current 12 Months 2017-09 2018-08

Previous 12 Months 2016-09 2017-08

Crime Group	Current 12 mths	Previous 12 mths	+/- Crime	% Change	Number of resolved Crimes	Resolved Rate (past 12mths)
CRIMINAL DAMAGE & ARSON	824	882	-58	-6.58%	115	13.96%
DRUG OFFENCES	246	180	66	36.67%	171	69.51%
MISCELLANEOUS CRIMES AGAINST SOCIETY	114	115	-1	-0.87%	23	20.18%
POSSESSION OF WEAPONS OFFENCES	85	66	19	28.79%	36	42.35%
PUBLIC DISORDER	254	184	70	38.04%	76	29.92%
ROBBERY	109	116	-7	-6.03%	28	25.69%
SEXUAL OFFENCES	285	241	44	18.26%	30	10.53%
THEFT OFFENCES	3278	3607	-329	-9.12%	323	9.85%
VIOLENCE AGAINST THE PERSON	2397	2040	357	17.50%	467	19.48%



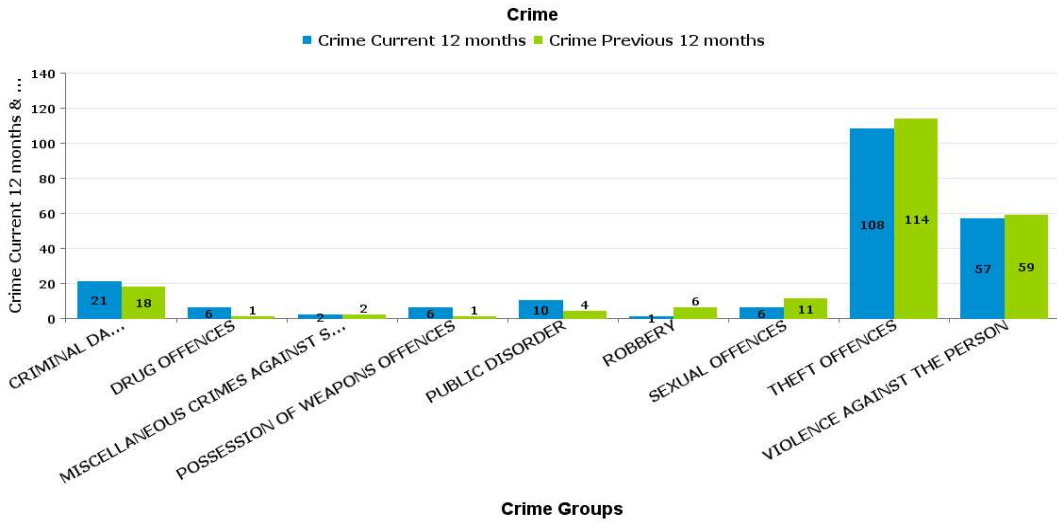
Crime Tree LV2 Desc

Crime Reports by CSP Sector and Ward

**KETTERING A6 TOWNS**

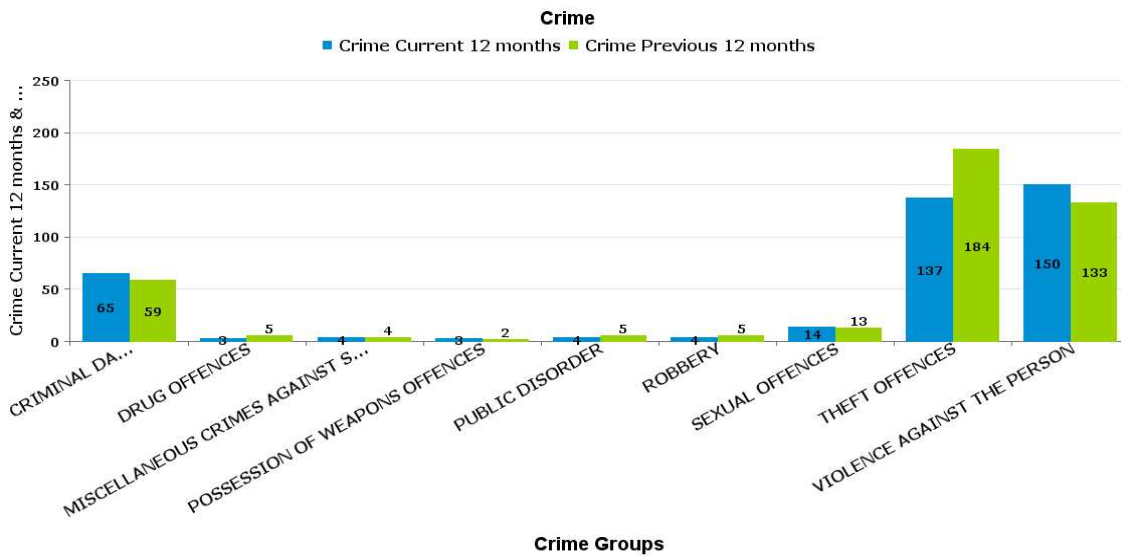
**BARTON**

Crime Group	Current 12 mths	Previous12 mths	+/- Crime	% Change	Number of resolved Crimes	Resolved Rate (past 12mths)
CRIMINAL DAMAGE & ARSON	21	18	3	16.67%	1	4.76%
DRUG OFFENCES	6	1	5	500.00%	3	50.00%
MISCELLANEOUS CRIMES AGAINST SOCIETY	2	2	0	0.00%		
POSSESSION OF WEAPONS OFFENCES	6	1	5	500.00%	2	33.33%
PUBLIC DISORDER	10	4	6	150.00%		
ROBBERY	1	6	-5	-83.33%	3	300.00%
SEXUAL OFFENCES	6	11	-5	-45.45%		
THEFT OFFENCES	108	114	-6	-5.26%	6	5.56%
VIOLENCE AGAINST THE PERSON	57	59	-2	-3.39%	11	19.30%



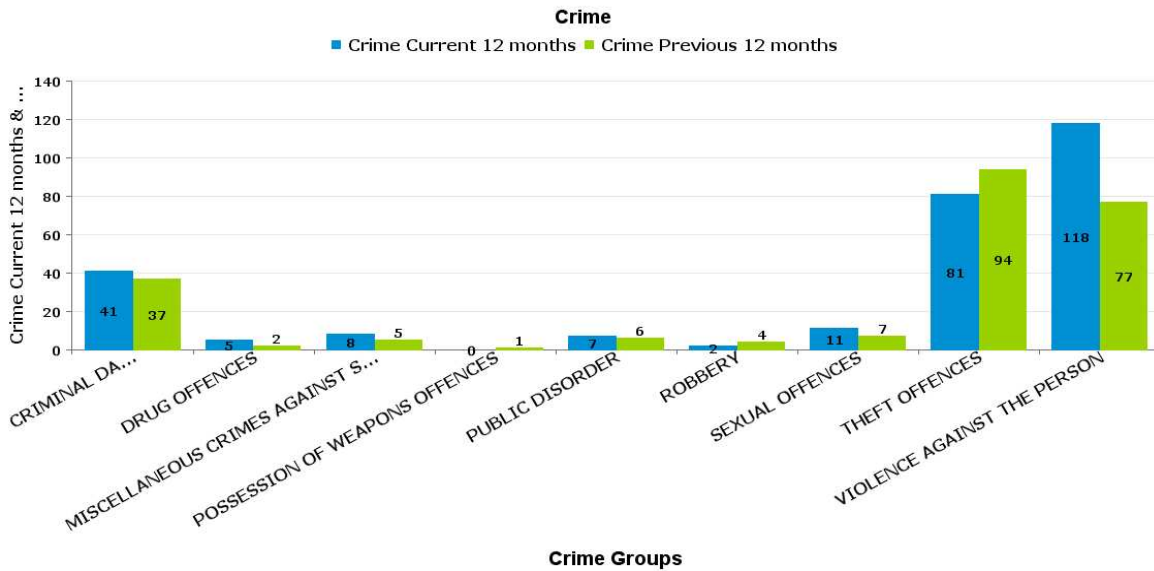
**BURTON LATIMER**

Crime Group	Current 12 mths	Previous 12 mths	+/- Crime	% Change	Number of resolved Crimes	Resolved Rate (past 12mths)
CRIMINAL DAMAGE & ARSON	65	59	6	10.17%	8	12.31%
DRUG OFFENCES	3	5	-2	-40.00%	2	66.67%
MISCELLANEOUS CRIMES AGAINST SOCIETY	4	4	0	0.00%	1	25.00%
POSSESSION OF WEAPONS OFFENCES	3	2	1	50.00%		
PUBLIC DISORDER	4	5	-1	-20.00%	1	25.00%
ROBBERY	4	5	-1	-20.00%	1	25.00%
SEXUAL OFFENCES	14	13	1	7.69%		
THEFT OFFENCES	137	184	-47	-25.54%	12	8.76%
VIOLENCE AGAINST THE PERSON	150	133	17	12.78%	26	17.33%



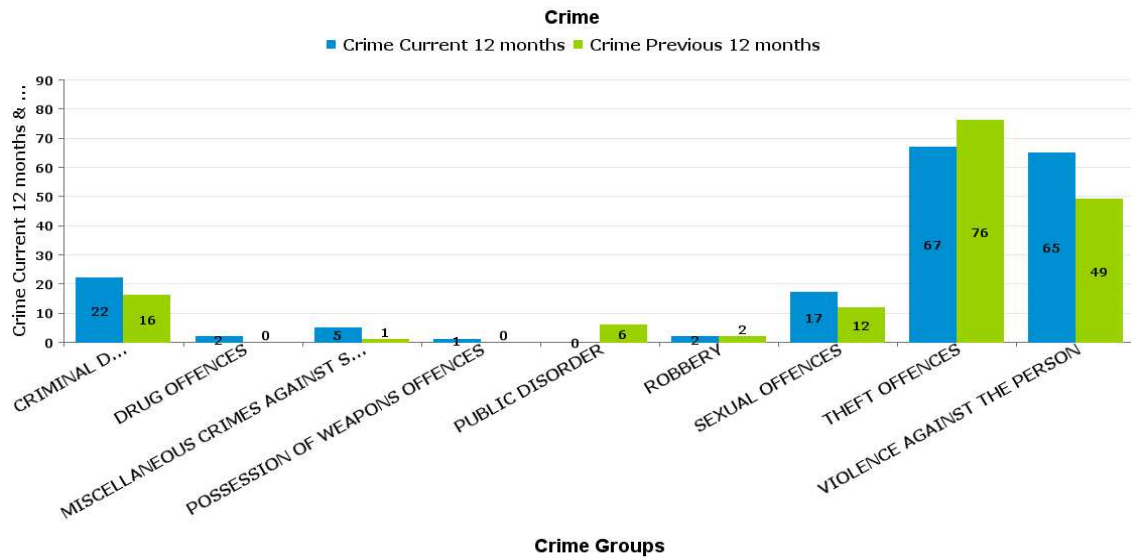
## DESBOROUGH LOATLAND

Crime Group	Current 12 mths	Previous 12 mths	+/- Crime	% Change	Number of resolved Crimes	Resolved Rate (past 12mths)
CRIMINAL DAMAGE & ARSON	41	37	4	10.81%	3	7.32%
DRUG OFFENCES	5	2	3	150.00%	4	80.00%
MISCELLANEOUS CRIMES AGAINST SOCIETY	8	5	3	60.00%	1	12.50%
POSSESSION OF WEAPONS OFFENCES	0	1	-1	-100.00%		
PUBLIC DISORDER	7	6	1	16.67%	1	14.29%
ROBBERY	2	4	-2	-50.00%		
SEXUAL OFFENCES	11	7	4	57.14%	1	9.09%
THEFT OFFENCES	81	94	-13	-13.83%		
VIOLENCE AGAINST THE PERSON	118	77	41	53.25%	28	23.73%



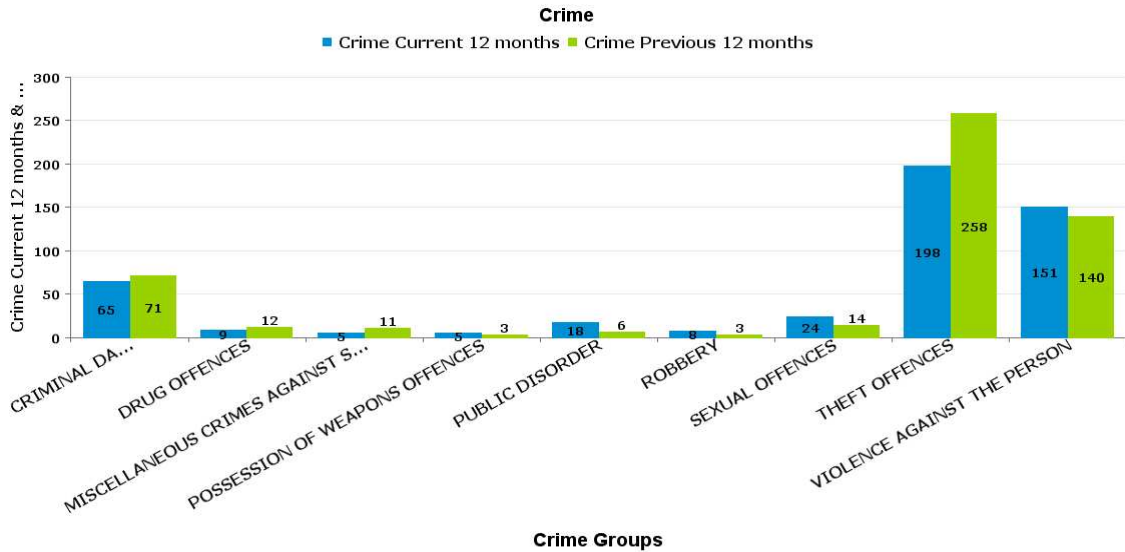
**DESBOROUGH ST GILES**

Crime Group	Current 12 mths	Previous 12 mths	+/- Crime	% Change	Number of resolved Crimes	Resolved Rate (past 12mths)
CRIMINAL DAMAGE & ARSON	22	16	6	37.50%	1	4.55%
DRUG OFFENCES	2	0	2	-100.00%	1	50.00%
MISCELLANEOUS CRIMES AGAINST SOCIETY	5	1	4	400.00%	1	20.00%
POSSESSION OF WEAPONS OFFENCES	1	0	1	-100.00%		
PUBLIC DISORDER	0	6	-6	-100.00%		
ROBBERY	2	2	0	0.00%	1	50.00%
SEXUAL OFFENCES	17	12	5	41.67%	5	29.41%
THEFT OFFENCES	67	76	-9	-11.84%		
VIOLENCE AGAINST THE PERSON	65	49	16	32.65%	8	12.31%



**ROTHWELL**

Crime Group	Current 12 mths	Previous 12 mths	+/- Crime	% Change	Number of resolved Crimes	Resolved Rate (past 12mths)
CRIMINAL DAMAGE & ARSON	65	71	-6	-8.45%	10	15.38%
DRUG OFFENCES	9	12	-3	-25.00%	7	77.78%
MISCELLANEOUS CRIMES AGAINST SOCIETY	5	11	-6	-54.55%	1	20.00%
POSSESSION OF WEAPONS OFFENCES	5	3	2	66.67%		
PUBLIC DISORDER	18	6	12	200.00%	4	22.22%
ROBBERY	8	3	5	166.67%		
SEXUAL OFFENCES	24	14	10	71.43%	4	16.67%
THEFT OFFENCES	198	258	-60	-23.26%	8	4.04%
VIOLENCE AGAINST THE PERSON	151	140	11	7.86%	22	14.57%



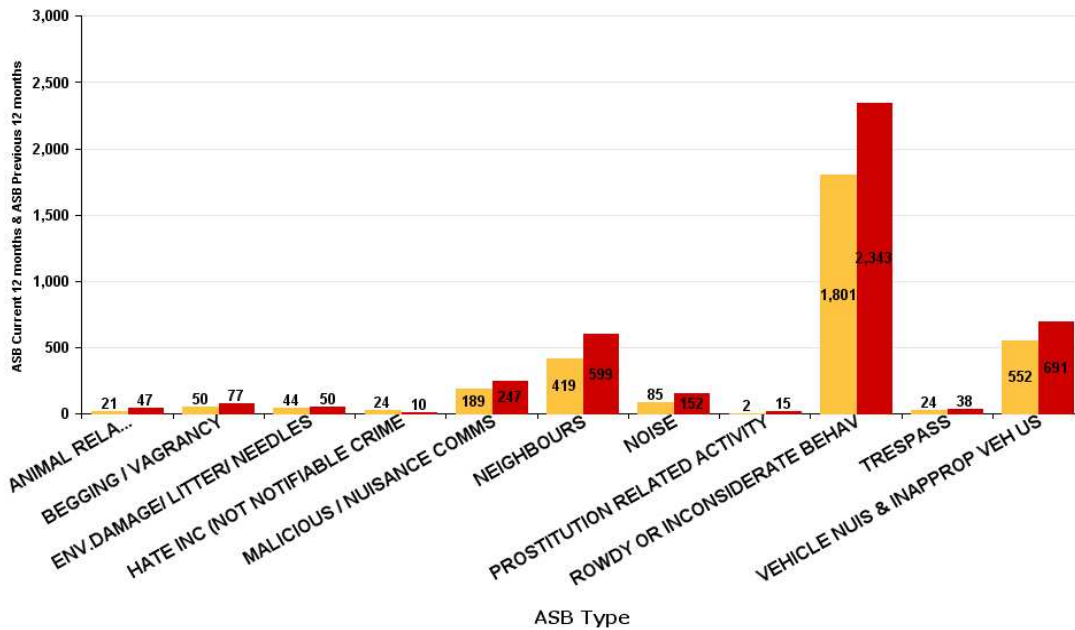
ASB Reports by CSP Sector and Ward

KETTERING BOROUGH ASB

ASB Type	Current 12 mths	Previous 12 mths	+/- Crime	% Change
ANIMAL RELATED INC ANTI-SOCIAL	21	47	-26	-55.32%
BEGGING / VAGRANCY	50	77	-27	-35.06%
ENV.DAMAGE/ LITTER/ NEEDLES	44	50	-6	-12.00%
HATE INC (NOT NOTIFIABLE CRIME)	24	10	14	140.00%
MALICIOUS / NUISANCE COMMS	189	247	-58	-23.48%
NEIGHBOURS	419	599	-180	-30.05%
NOISE	85	152	-67	-44.08%
PROSTITUTION RELATED ACTIVITY	2	15	-13	-86.67%
ROWDY OR INCONSIDERATE BEHAV	1801	2343	-542	-23.13%
TRESPASS	24	38	-14	-36.84%
VEHICLE NUIS & INAPPROP VEH US	552	691	-139	-20.12%
<b>Sum:</b>	<b>3211</b>	<b>4269</b>	<b>-1058</b>	<b>-24.78%</b>

ASB

ASB Current 12 months ASB Previous 12 months



ASB Reports by CSP Sector and Ward

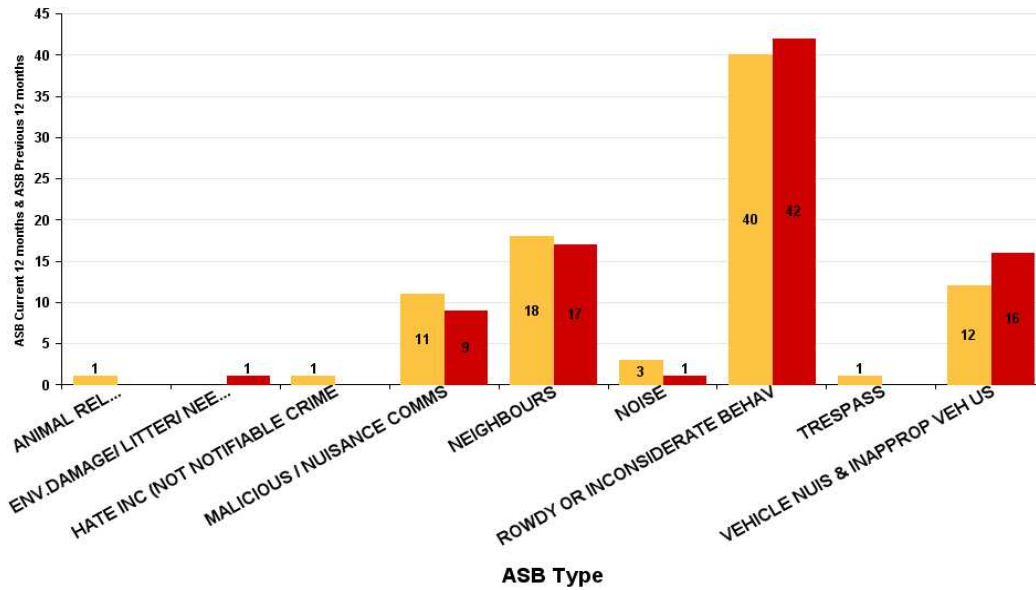
**KETTERING A6 TOWNS ASB**

**Barton**

ASB Type	Current 12 mths	Previous 12 mths	+/- Crime	% Change
ANIMAL RELATED INC ANTI-SOCIAL	1		1	-100.00%
ENV.DAMAGE/ LITTER/ NEEDLES		1	-1	-100.00%
HATE INC (NOT NOTIFIABLE CRIME	1		1	-100.00%
MALICIOUS / NUISANCE COMMS	11	9	2	22.22%
NEIGHBOURS	18	17	1	5.88%
NOISE	3	1	2	200.00%
ROWDY OR INCONSIDERATE BEHAV	40	42	-2	-4.76%
TRESPASS	1		1	-100.00%
VEHICLE NUIS & INAPPROP VEH US	12	16	-4	-25.00%
<b>Sum:</b>	<b>87</b>	<b>86</b>	<b>1</b>	<b>1.16%</b>

**ASB**

■ ASB Current 12 months ■ ASB Previous 12 months

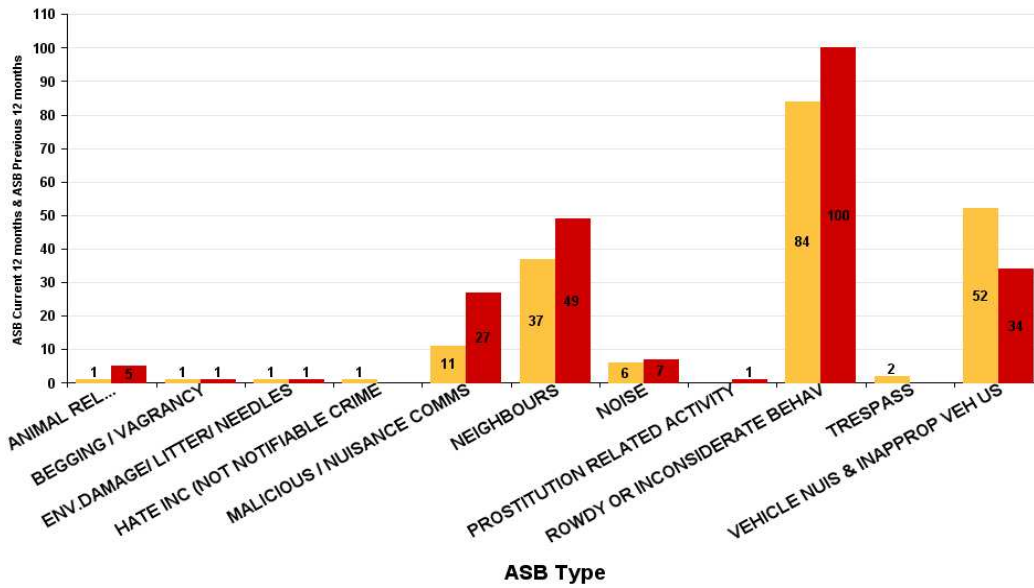




ASB Type	Current 12 mths	Previous 12 mths	+/- Crime	% Change
ANIMAL RELATED INC ANTI-SOCIAL	1	5	-4	-80.00%
BEGGING / VAGRANCY	1	1	0	0.00%
ENV.DAMAGE/ LITTER/ NEEDLES	1	1	0	0.00%
HATE INC (NOT NOTIFIABLE CRIME	1		1	-100.00%
MALICIOUS / NUISANCE COMMS	11	27	-16	-59.26%
NEIGHBOURS	37	49	-12	-24.49%
NOISE	6	7	-1	-14.29%
PROSTITUTION RELATED ACTIVITY		1	-1	-100.00%
ROWDY OR INCONSIDERATE BEHAV	84	100	-16	-16.00%
TRESPASS	2		2	-100.00%
VEHICLE NUIS & INAPPROP VEH US	52	34	18	52.94%
<b>Sum:</b>	<b>196</b>	<b>225</b>	<b>-29</b>	<b>-12.89%</b>

ASB

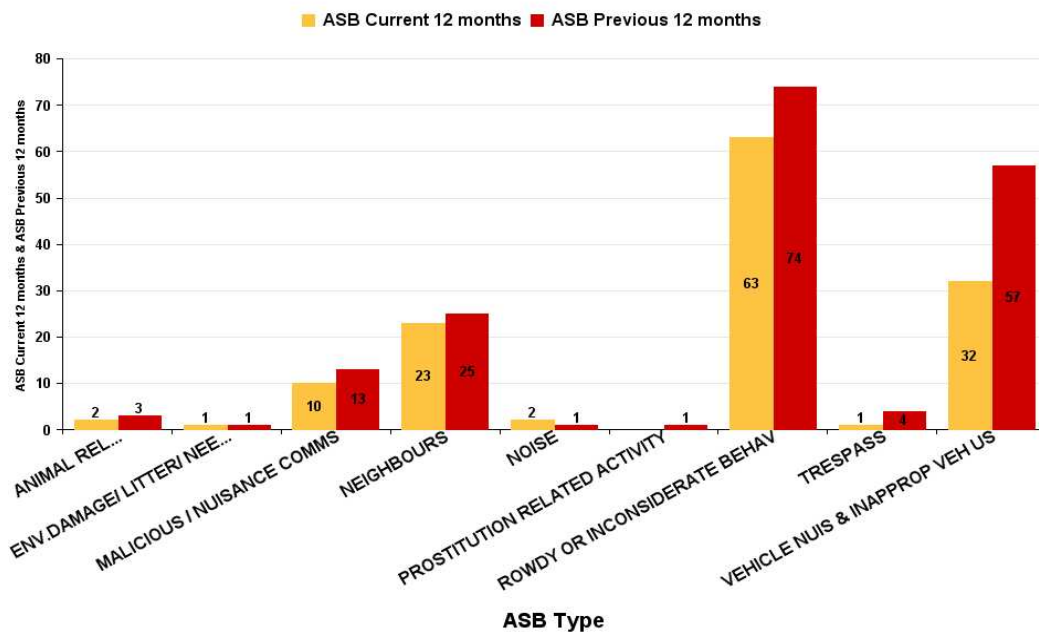
■ ASB Current 12 months ■ ASB Previous 12 months



## Desborough Loatland

ASB Type	Current 12 mths	Previous 12 mths	+/- Crime	% Change
ANIMAL RELATED INC ANTI-SOCIAL	2	3	-1	-33.33%
ENV.DAMAGE/ LITTER/ NEEDLES	1	1	0	0.00%
MALICIOUS / NUISANCE COMMS	10	13	-3	-23.08%
NEIGHBOURS	23	25	-2	-8.00%
NOISE	2	1	1	100.00%
PROSTITUTION RELATED ACTIVITY		1	-1	-100.00%
ROWDY OR INCONSIDERATE BEHAV	63	74	-11	-14.86%
TRESPASS	1	4	-3	-75.00%
VEHICLE NUIS & INAPPROP VEH US	32	57	-25	-43.86%
<b>Sum:</b>	<b>134</b>	<b>179</b>	<b>-45</b>	<b>-25.14%</b>

### ASB

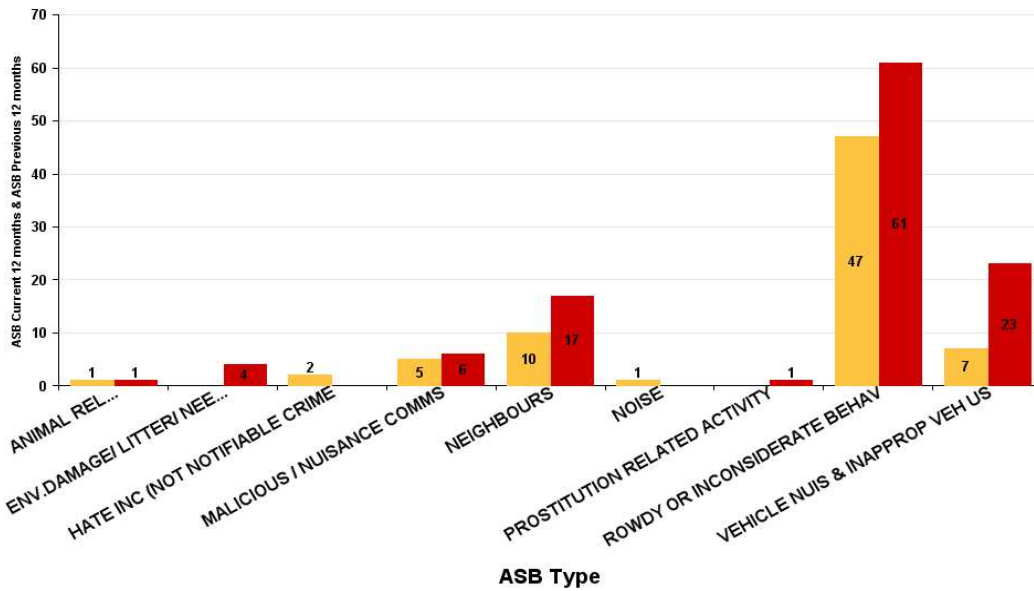


**Desborough St Giles**

ASB Type	Current 12 mths	Previous 12 mths	+/- Crime	% Change
ANIMAL RELATED INC ANTI-SOCIAL	1	1	0	0.00%
ENV.DAMAGE/ LITTER/ NEEDLES		4	-4	-100.00%
HATE INC (NOT NOTIFIABLE CRIME	2		2	-100.00%
MALICIOUS / NUISANCE COMMS	5	6	-1	-16.67%
NEIGHBOURS	10	17	-7	-41.18%
NOISE	1		1	-100.00%
PROSTITUTION RELATED ACTIVITY		1	-1	-100.00%
ROWDY OR INCONSIDERATE BEHAV	47	61	-14	-22.95%
VEHICLE NUIS & INAPPROP VEH US	7	23	-16	-69.57%
<b>Sum:</b>	<b>73</b>	<b>113</b>	<b>-40</b>	<b>-35.40%</b>

**ASB**

■ ASB Current 12 months ■ ASB Previous 12 months



**Rothwell**

ASB Type	Current 12 mths	Previous 12 mths	+/- Crime	% Change
ANIMAL RELATED INC ANTI-SOCIAL		9	-9	-100.00%
BEGGING / VAGRANCY		2	-2	-100.00%
ENV.DAMAGE/ LITTER/ NEEDLES	2	6	-4	-66.67%
HATE INC (NOT NOTIFIABLE CRIME	1		1	-100.00%
MALICIOUS / NUISANCE COMMS	17	13	4	30.77%
NEIGHBOURS	23	53	-30	-56.60%
NOISE	5	6	-1	-16.67%
ROWDY OR INCONSIDERATE BEHAV	133	133	0	0.00%
TRESPASS	2	1	1	100.00%
VEHICLE NUIS & INAPPROP VEH US	35	63	-28	-44.44%
<b>Sum:</b>	<b>218</b>	<b>286</b>	<b>-68</b>	<b>-23.78%</b>

**ASB**

■ ASB Current 12 months ■ ASB Previous 12 months

