

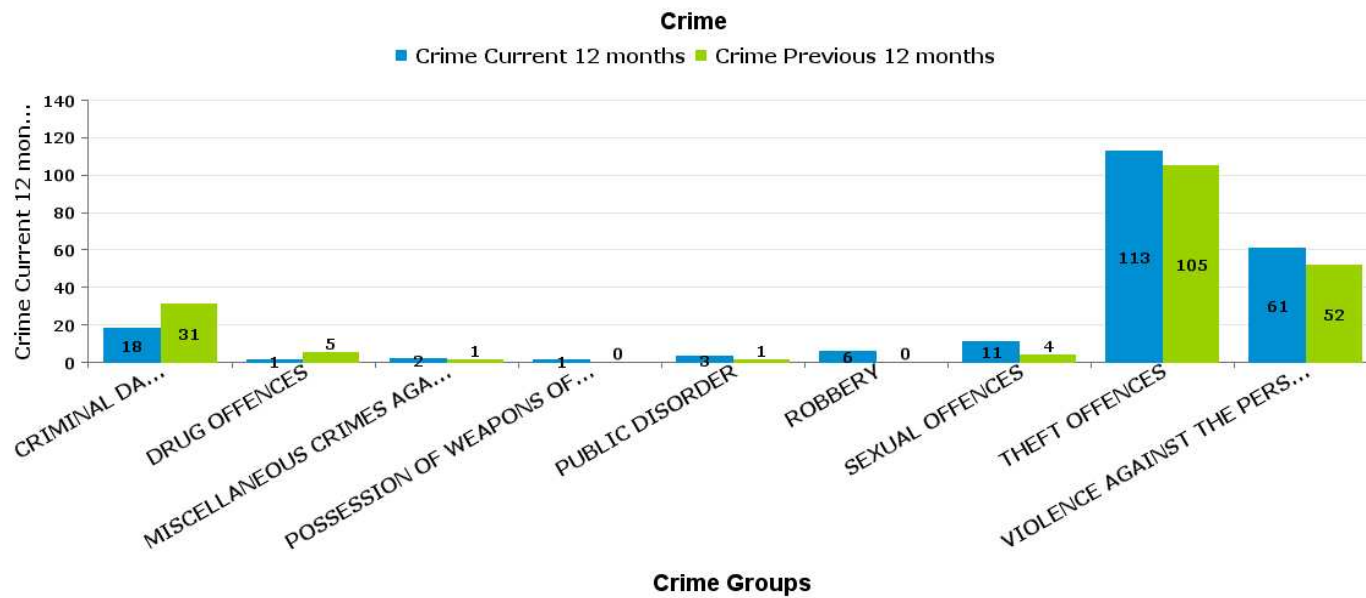
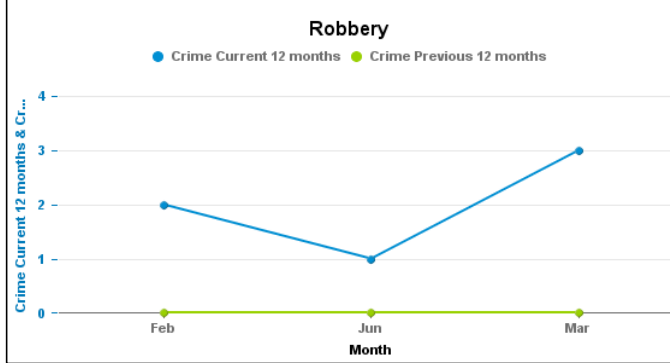
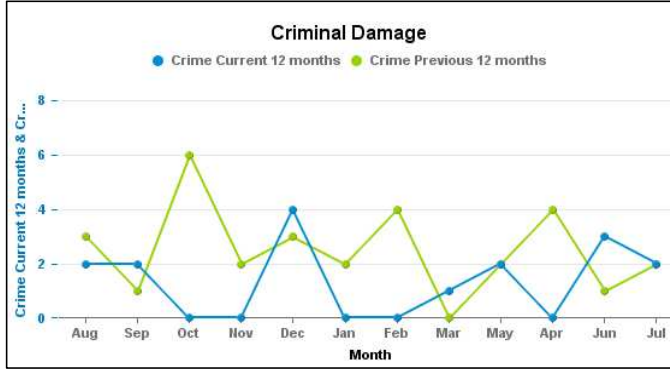
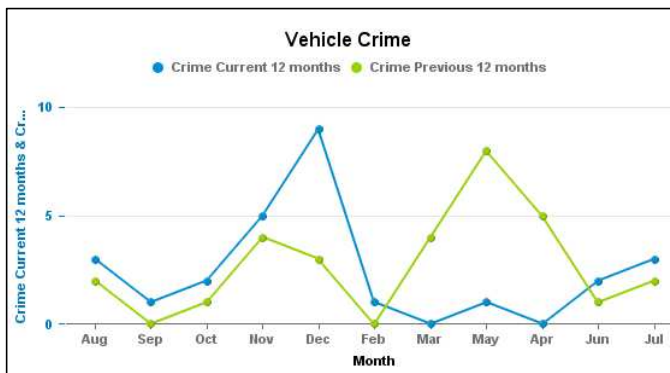
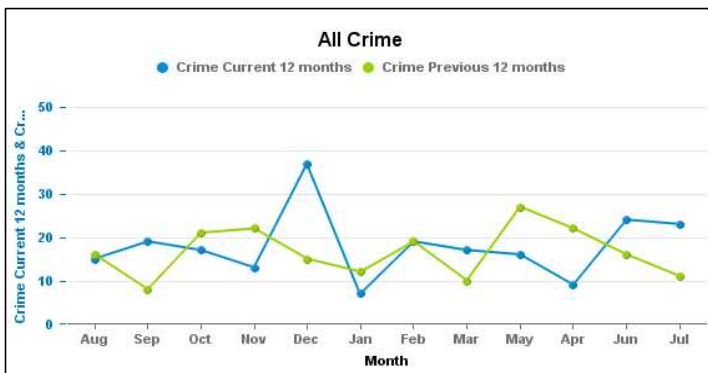
Crime Reports by CSP Sector and Ward

Kettering A6 Towns

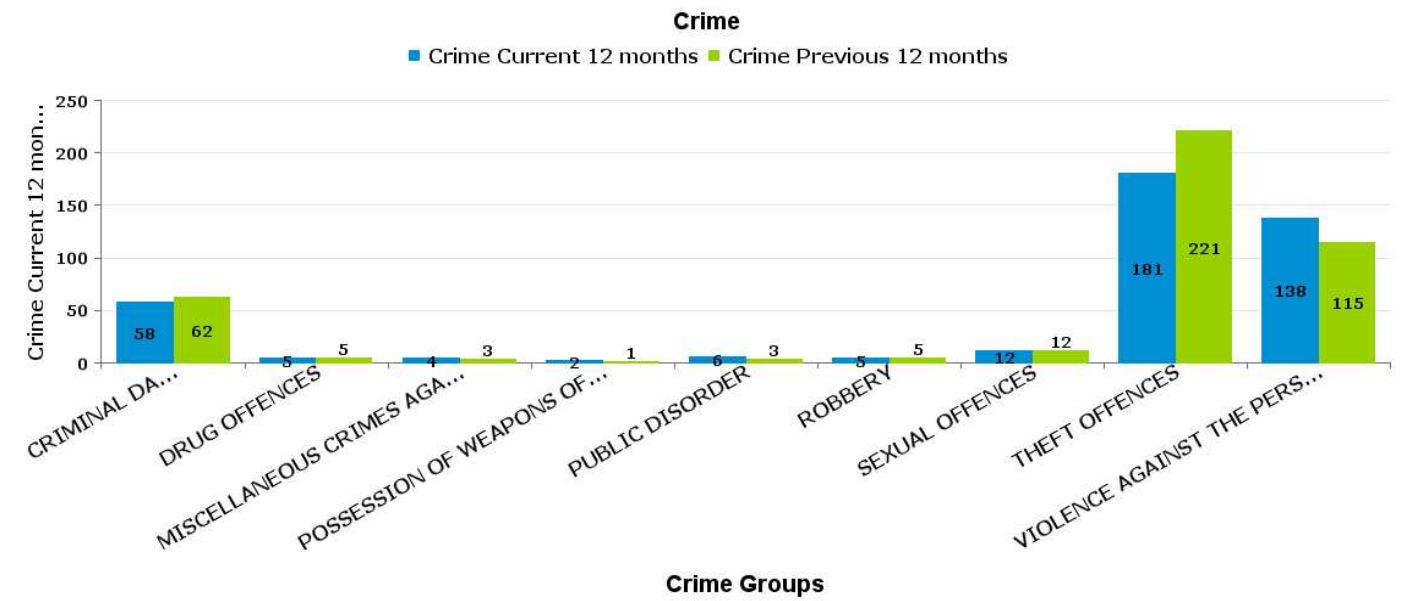
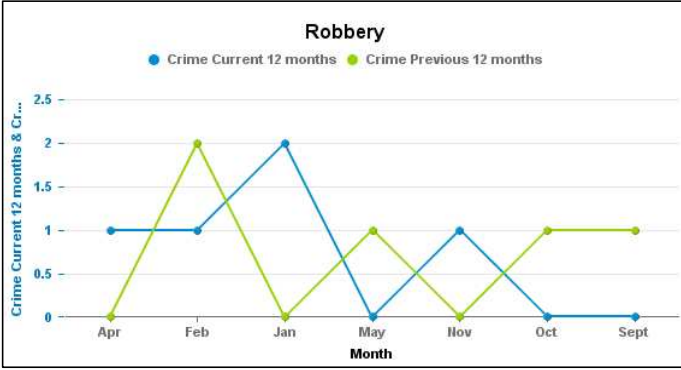
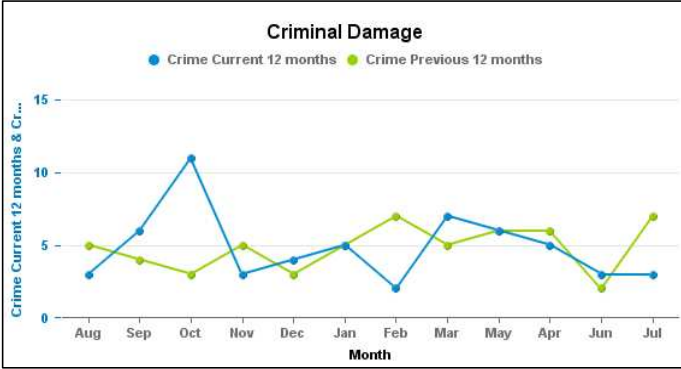
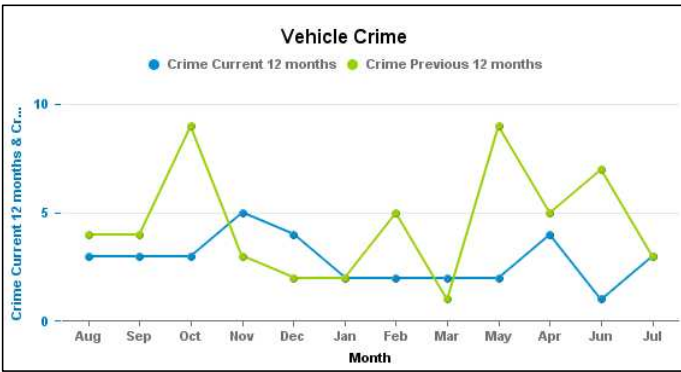
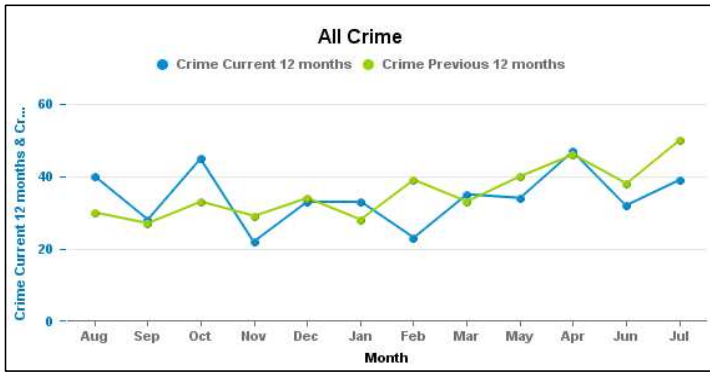
**KETTERING**

**BARTON**

Crime Group	Current 12 Months 2016-08 2017-07	Previous 12 Months 2015-08 2016-07	+/- Crime	% Change	Number of resolved Crimes	Resolved Rate (past 12mths)
CRIMINAL DAMAGE & ARSON	18	31	-13	-41.94%	3	16.67%
DRUG OFFENCES	1	5	-4	-80.00%	2	200.00%
MISCELLANEOUS CRIMES AGAINST SOCIETY	2	1	1	100.00%	1	50.00%
POSSESSION OF WEAPONS OFFENCES	1	0	1	-100.00%		
PUBLIC DISORDER	3	1	2	200.00%	1	33.33%
ROBBERY	6	0	6	-100.00%		
SEXUAL OFFENCES	11	4	7	175.00%	1	9.09%
THEFT OFFENCES	113	105	8	7.62%	11	9.73%
VIOLENCE AGAINST THE PERSON	61	52	9	17.31%	27	44.26%

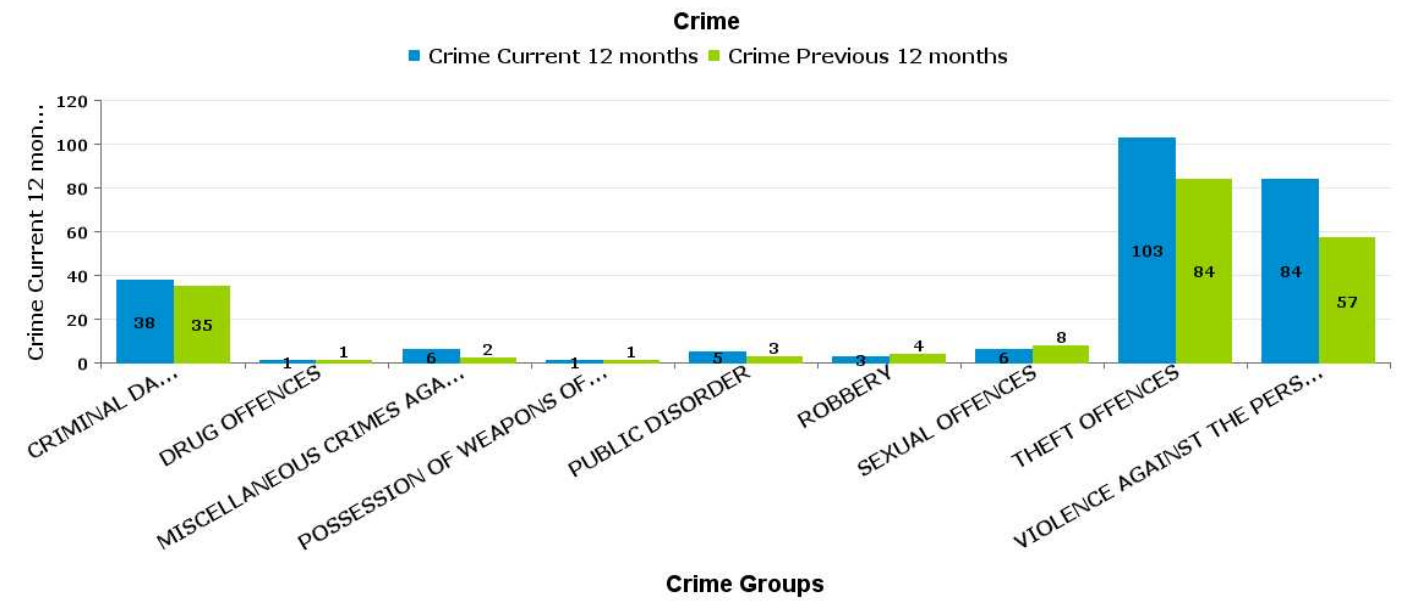
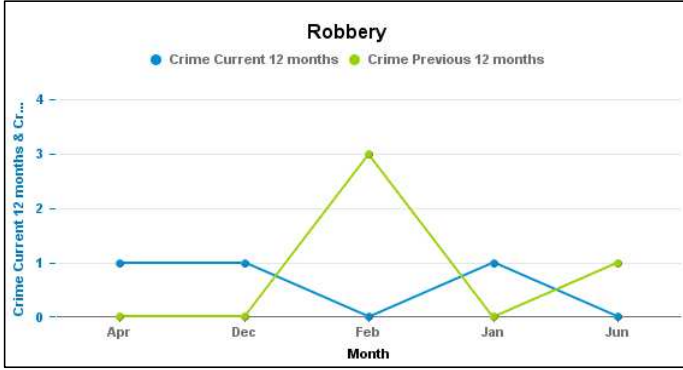
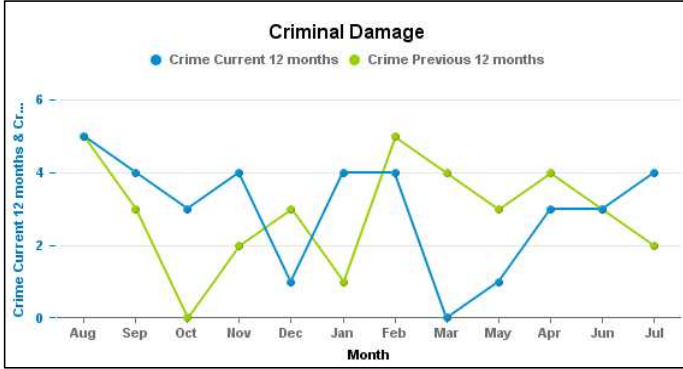
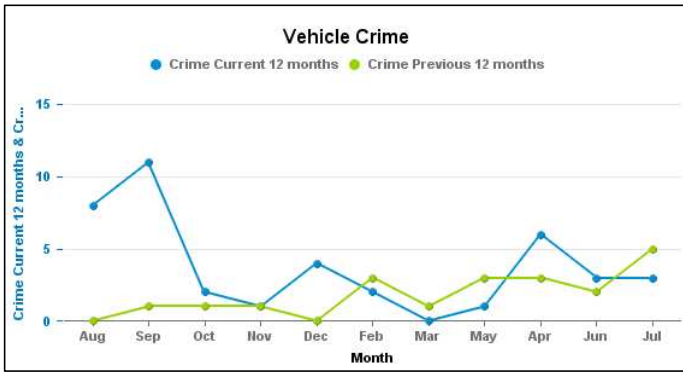
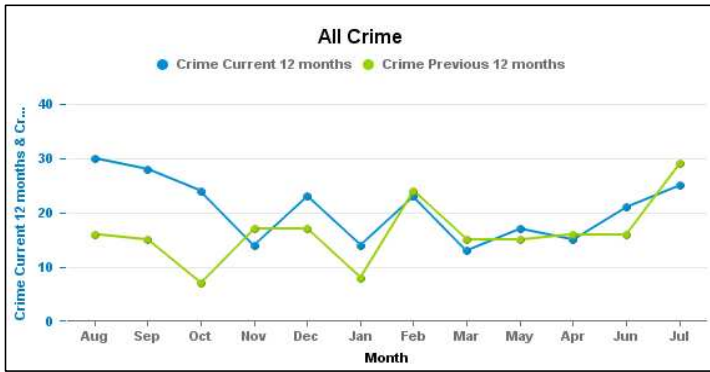


Crime Group	Current 12 Months 2016-08 2017-07	Previous 12 Months 2015-08 2016-07	+/- Crime	% Change	Number of resolved Crimes	Resolved Rate (past 12mths)
CRIMINAL DAMAGE & ARSON	58	62	-4	-6.45%	8	13.79%
DRUG OFFENCES	5	5	0	0.00%	3	60.00%
MISCELLANEOUS CRIMES AGAINST SOCIETY	4	3	1	33.33%		
POSSESSION OF WEAPONS OFFENCES	2	1	1	100.00%	1	50.00%
PUBLIC DISORDER	6	3	3	100.00%	1	16.67%
ROBBERY	5	5	0	0.00%	1	20.00%
SEXUAL OFFENCES	12	12	0	0.00%		
THEFT OFFENCES	181	221	-40	-18.10%	26	14.36%
VIOLENCE AGAINST THE PERSON	138	115	23	20.00%	28	20.29%



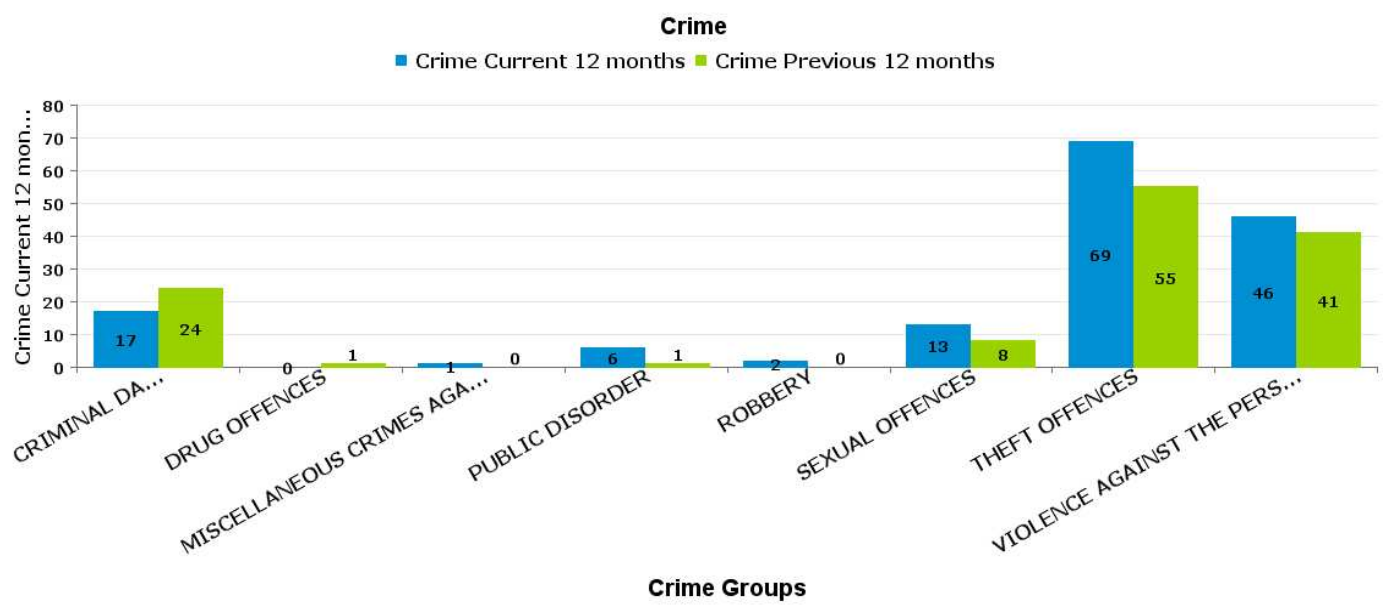
DESBOROUGH LOATLAND

Crime Group	Current 12 Months 2016-08 2017-07	Previous 12 Months 2015-08 2016-07	+/- Crime	% Change	Number of resolved Crimes	Resolved Rate (past 12mths)
CRIMINAL DAMAGE & ARSON	38	35	3	8.57%	5	13.16%
DRUG OFFENCES	1	1	0	0.00%	2	200.00%
MISCELLANEOUS CRIMES AGAINST SOCIETY	6	2	4	200.00%		
POSSESSION OF WEAPONS OFFENCES	1	1	0	0.00%		
PUBLIC DISORDER	5	3	2	66.67%	2	40.00%
ROBBERY	3	4	-1	-25.00%		
SEXUAL OFFENCES	6	8	-2	-25.00%	3	50.00%
THEFT OFFENCES	103	84	19	22.62%	2	1.94%
VIOLENCE AGAINST THE PERSON	84	57	27	47.37%	15	17.86%



DESBOROUGH ST GILES

Crime Group	Current 12 Months 2016-08 2017-07	Previous 12 Months 2015-08 2016-07	+/- Crime	% Change	Number of resolved Crimes	Resolved Rate (past 12mths)
CRIMINAL DAMAGE & ARSON	17	24	-7	-29.17%	1	5.88%
DRUG OFFENCES	0	1	-1	-100.00%		
MISCELLANEOUS CRIMES AGAINST SOCIETY	1	0	1	-100.00%	1	100.00%
PUBLIC DISORDER	6	1	5	500.00%	1	16.67%
ROBBERY	2	0	2	-100.00%		
SEXUAL OFFENCES	13	8	5	62.50%		
THEFT OFFENCES	69	55	14	25.45%	2	2.90%
VIOLENCE AGAINST THE PERSON	46	41	5	12.20%	8	17.39%



Crime Group	Current 12 Months 2016-08 2017-07	Previous 12 Months 2015-08 2016-07	+/- Crime	% Change	Number of resolved Crimes	Resolved Rate (past 12mths)
CRIMINAL DAMAGE & ARSON	67	84	-17	-20.24%	5	7.46%
DRUG OFFENCES	13	4	9	225.00%	11	84.62%
MISCELLANEOUS CRIMES AGAINST SOCIETY	10	7	3	42.86%	2	20.00%
POSSESSION OF WEAPONS OFFENCES	4	3	1	33.33%	3	75.00%
PUBLIC DISORDER	7	4	3	75.00%	1	14.29%
ROBBERY	3	5	-2	-40.00%	2	66.67%
SEXUAL OFFENCES	14	5	9	180.00%	1	7.14%
THEFT OFFENCES	248	249	-1	-0.40%	17	6.85%
VIOLENCE AGAINST THE PERSON	133	117	16	13.68%	25	18.80%

