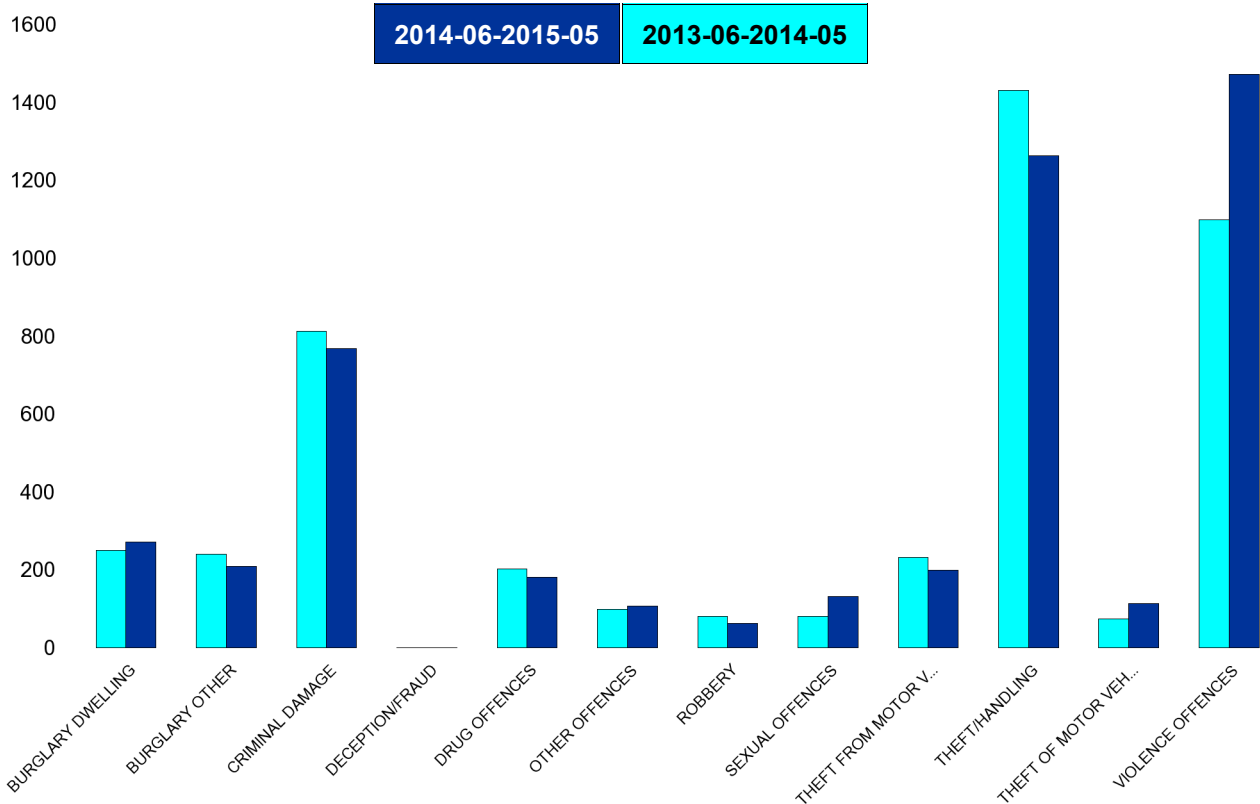


# Kettering Town Forum Report 2013-06 to 2015-05

## Kettering Town SCT - Crime

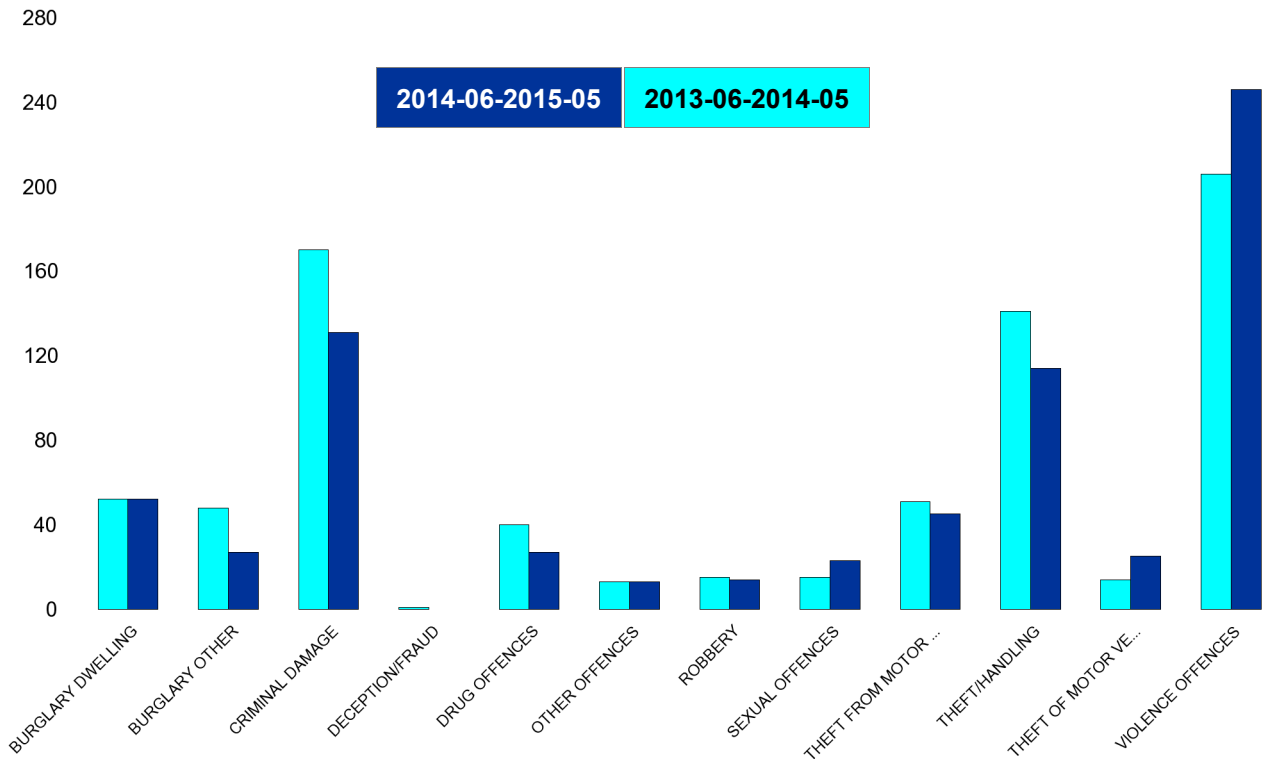
HO Group	No of Crimes Latest 12 Months	No of Crimes Previous 12 Months	+/- Crime	% Change	No of Resolved Outcome Crimes	Detection Rate (Past 12 Months)
BURGLARY DWELLING	271	250	21	8%	23	8%
BURGLARY OTHER	209	240	-31	-13%	20	10%
CRIMINAL DAMAGE	769	813	-44	-5%	154	20%
DECEPTION/FRAUD	1	1	0	0%	0	0%
DRUG OFFENCES	181	203	-22	-11%	153	85%
OTHER OFFENCES	107	99	8	8%	54	50%
ROBBERY	63	80	-17	-21%	22	35%
SEXUAL OFFENCES	131	81	50	62%	25	19%
THEFT FROM MOTOR VEHICLES	199	232	-33	-14%	2	1%
THEFT/HANDLING	1263	1431	-168	-12%	402	32%
THEFT OF MOTOR VEHICLES	113	74	39	53%	24	21%
VIOLENCE OFFENCES	1472	1099	373	34%	484	33%
<b>Sum:</b>	<b>4779</b>	<b>4603</b>	<b>176</b>	<b>4%</b>	<b>1363</b>	<b>29%</b>



## Kettering Town Forum Report 2013-06 to 2015-05

### All Saints

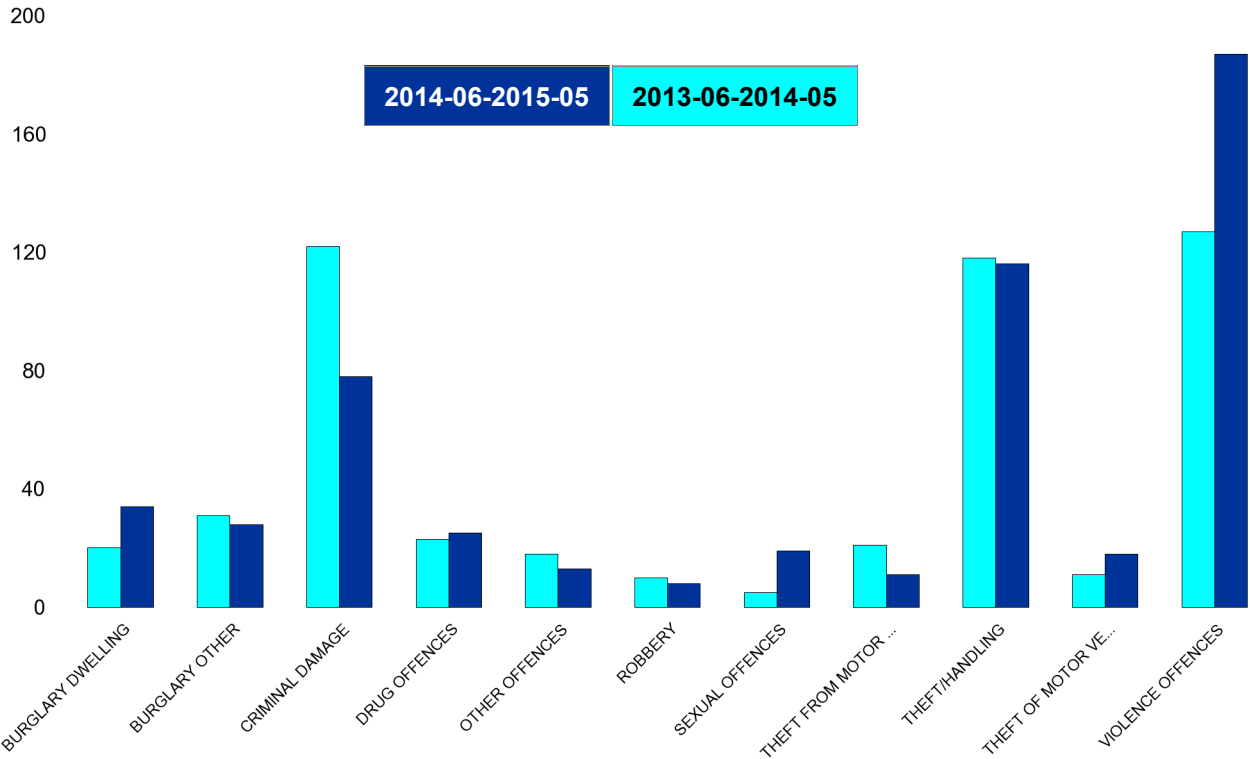
HO Group	No of Crimes Latest 12 Months	No of Crimes Previous 12 Months	+/- Crime	% Change	No of Resolved Outcome Crimes	Detection Rate (Past 12 Months)
BURGLARY DWELLING	52	52	0	0%	3	6%
BURGLARY OTHER	27	48	-21	-44%	2	7%
CRIMINAL DAMAGE	131	170	-39	-23%	27	21%
DECEPTION/FRAUD	0	1	-1	-100%	0	0%
DRUG OFFENCES	27	40	-13	-33%	26	96%
OTHER OFFENCES	13	13	0	0%	6	46%
ROBBERY	14	15	-1	-7%	4	29%
SEXUAL OFFENCES	23	15	8	53%	8	35%
THEFT FROM MOTOR VEHICLES	45	51	-6	-12%	0	0%
THEFT/HANDLING	114	141	-27	-19%	29	25%
THEFT OF MOTOR VEHICLES	25	14	11	79%	4	16%
VIOLENCE OFFENCES	246	206	40	19%	70	28%
<b>Sum:</b>	<b>717</b>	<b>766</b>	<b>-49</b>	<b>-6%</b>	<b>179</b>	<b>25%</b>



## Kettering Town Forum Report 2013-06 to 2015-05

### Avondale Grange

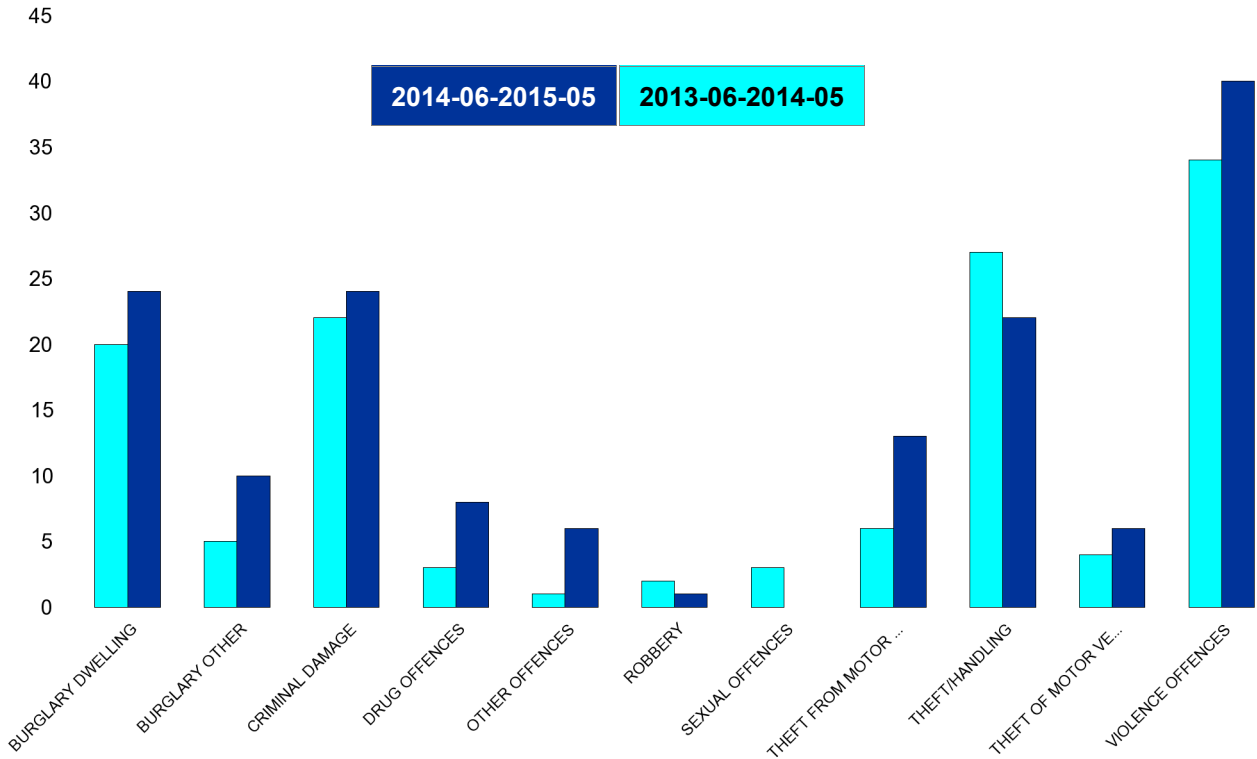
HO Group	No of Crimes Latest 12 Months	No of Crimes Previous 12 Months	+/- Crime	% Change	No of Resolved Outcome Crimes	Detection Rate (Past 12 Months)
BURGLARY DWELLING	34	20	14	70%	4	12%
BURGLARY OTHER	28	31	-3	-10%	3	11%
CRIMINAL DAMAGE	78	122	-44	-36%	19	24%
DRUG OFFENCES	25	23	2	9%	21	84%
OTHER OFFENCES	13	18	-5	-28%	4	31%
ROBBERY	8	10	-2	-20%	4	50%
SEXUAL OFFENCES	19	5	14	280%	0	0%
THEFT FROM MOTOR VEHICLES	11	21	-10	-48%	1	9%
THEFT/HANDLING	116	118	-2	-2%	46	40%
THEFT OF MOTOR VEHICLES	18	11	7	64%	2	11%
VIOLENCE OFFENCES	187	127	60	47%	66	35%
<b>Sum:</b>	<b>537</b>	<b>506</b>	<b>31</b>	<b>6%</b>	<b>170</b>	<b>32%</b>



## Kettering Town Forum Report 2013-06 to 2015-05

### Brambleside

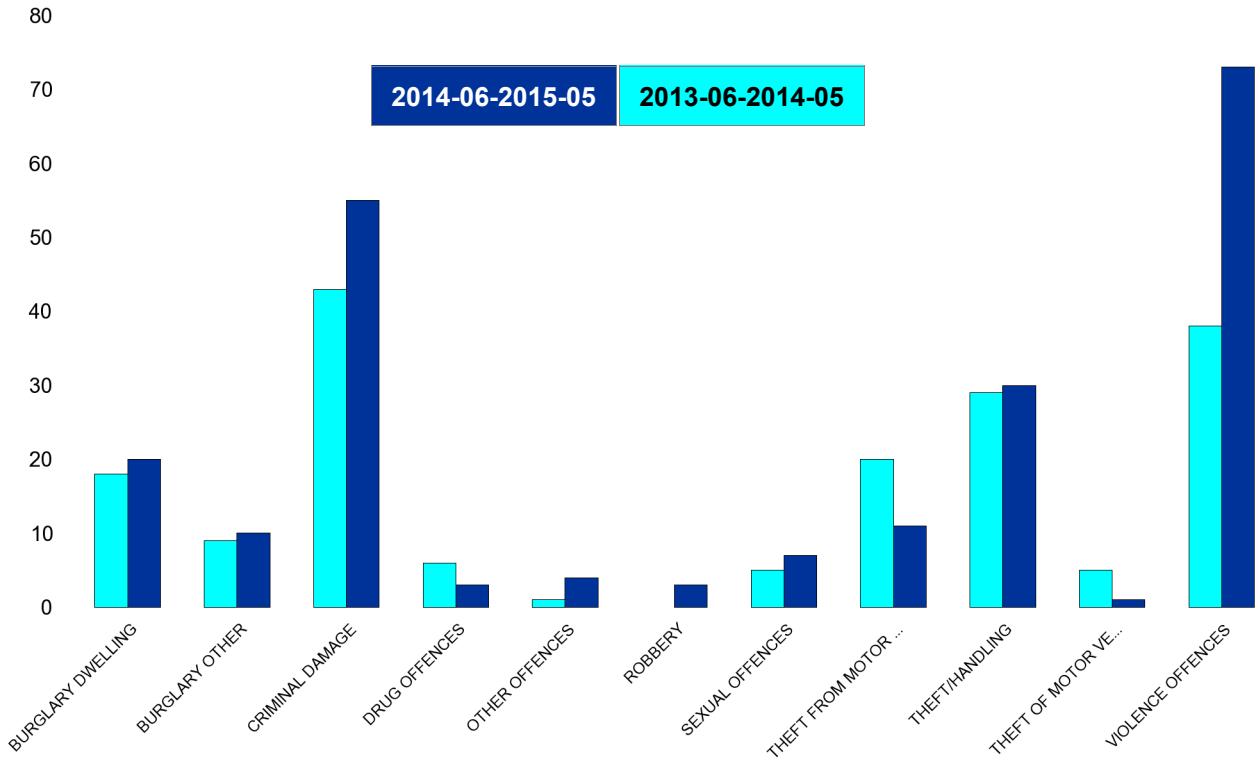
HO Group	No of Crimes Latest 12 Months	No of Crimes Previous 12 Months	+/- Crime	% Change	No of Resolved Outcome Crimes	Detection Rate (Past 12 Months)
BURGLARY DWELLING	24	20	4	20%	0	0%
BURGLARY OTHER	10	5	5	100%	0	0%
CRIMINAL DAMAGE	24	22	2	9%	3	13%
DRUG OFFENCES	8	3	5	167%	5	63%
OTHER OFFENCES	6	1	5	500%	3	50%
ROBBERY	1	2	-1	-50%	2	200%
SEXUAL OFFENCES	0	3	-3	-100%	0	0%
THEFT FROM MOTOR VEHICLES	13	6	7	117%	0	0%
THEFT/HANDLING	22	27	-5	-19%	3	14%
THEFT OF MOTOR VEHICLES	6	4	2	50%	3	50%
VIOLENCE OFFENCES	40	34	6	18%	14	35%
<b>Sum:</b>	<b>154</b>	<b>127</b>	<b>27</b>	<b>21%</b>	<b>33</b>	<b>21%</b>



## Kettering Town Forum Report 2013-06 to 2015-05

### Ise Lodge

HO Group	No of Crimes Latest 12 Months	No of Crimes Previous 12 Months	+/- Crime	% Change	No of Resolved Outcome Crimes	Detection Rate (Past 12 Months)
BURGLARY DWELLING	20	18	2	11%	2	10%
BURGLARY OTHER	10	9	1	11%	0	0%
CRIMINAL DAMAGE	55	43	12	28%	5	9%
DRUG OFFENCES	3	6	-3	-50%	2	67%
OTHER OFFENCES	4	1	3	300%	2	50%
ROBBERY	3	0	3	0%	0	0%
SEXUAL OFFENCES	7	5	2	40%	1	14%
THEFT FROM MOTOR VEHICLES	11	20	-9	-45%	0	0%
THEFT/HANDLING	30	29	1	3%	4	13%
THEFT OF MOTOR VEHICLES	1	5	-4	-80%	0	0%
VIOLENCE OFFENCES	73	38	35	92%	20	27%
<b>Sum:</b>	<b>217</b>	<b>174</b>	<b>43</b>	<b>25%</b>	<b>36</b>	<b>17%</b>

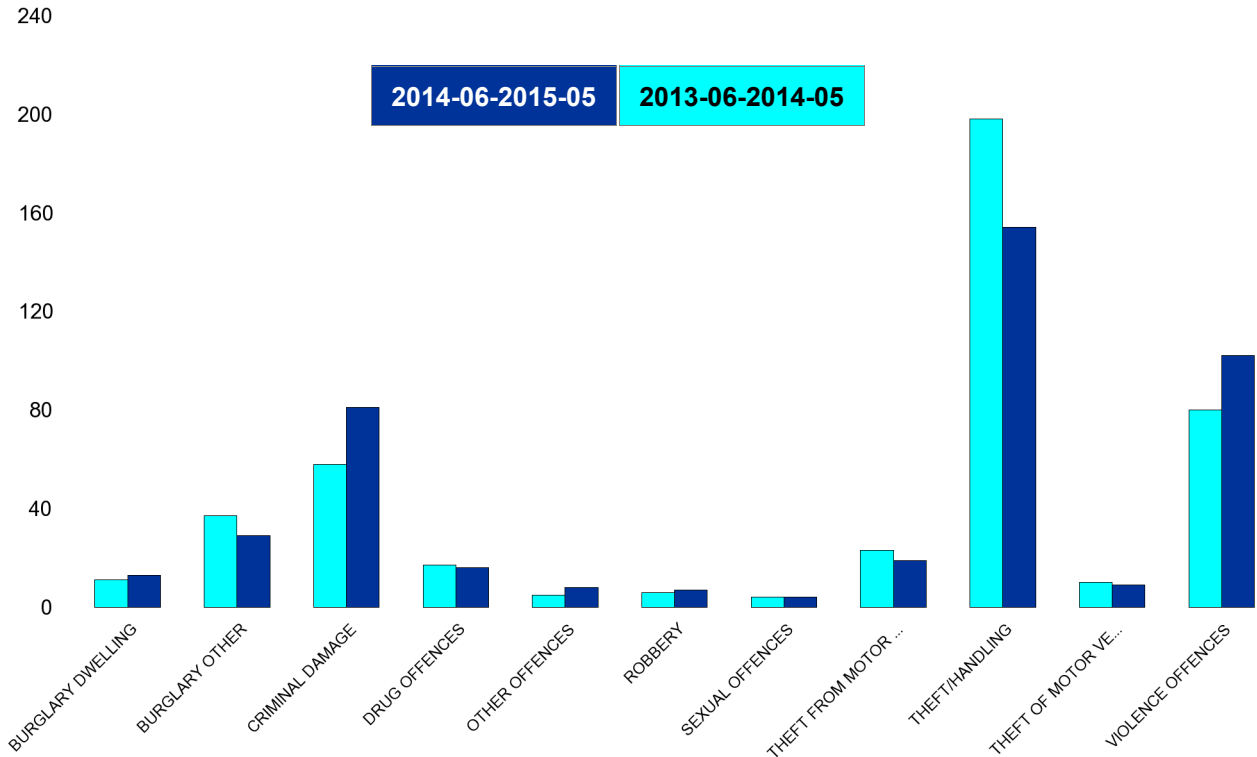


## Kettering Town Forum Report 2013-06 to 2015-05

### Northfield

HO Group	No of Crimes Latest 12 Months	No of Crimes Previous 12 Months	+/- Crime	% Change
BURGLARY DWELLING	13	11	2	18%
BURGLARY OTHER	29	37	-8	-22%
CRIMINAL DAMAGE	81	58	23	40%
DRUG OFFENCES	16	17	-1	-6%
OTHER OFFENCES	8	5	3	60%
ROBBERY	7	6	1	17%
SEXUAL OFFENCES	4	4	0	0%
THEFT FROM MOTOR VEHICLES	19	23	-4	-17%
THEFT/HANDLING	154	198	-44	-22%
THEFT OF MOTOR VEHICLES	9	10	-1	-10%
VIOLENCE OFFENCES	102	80	22	28%
<b>Sum:</b>	<b>442</b>	<b>449</b>	<b>-7</b>	<b>-2%</b>

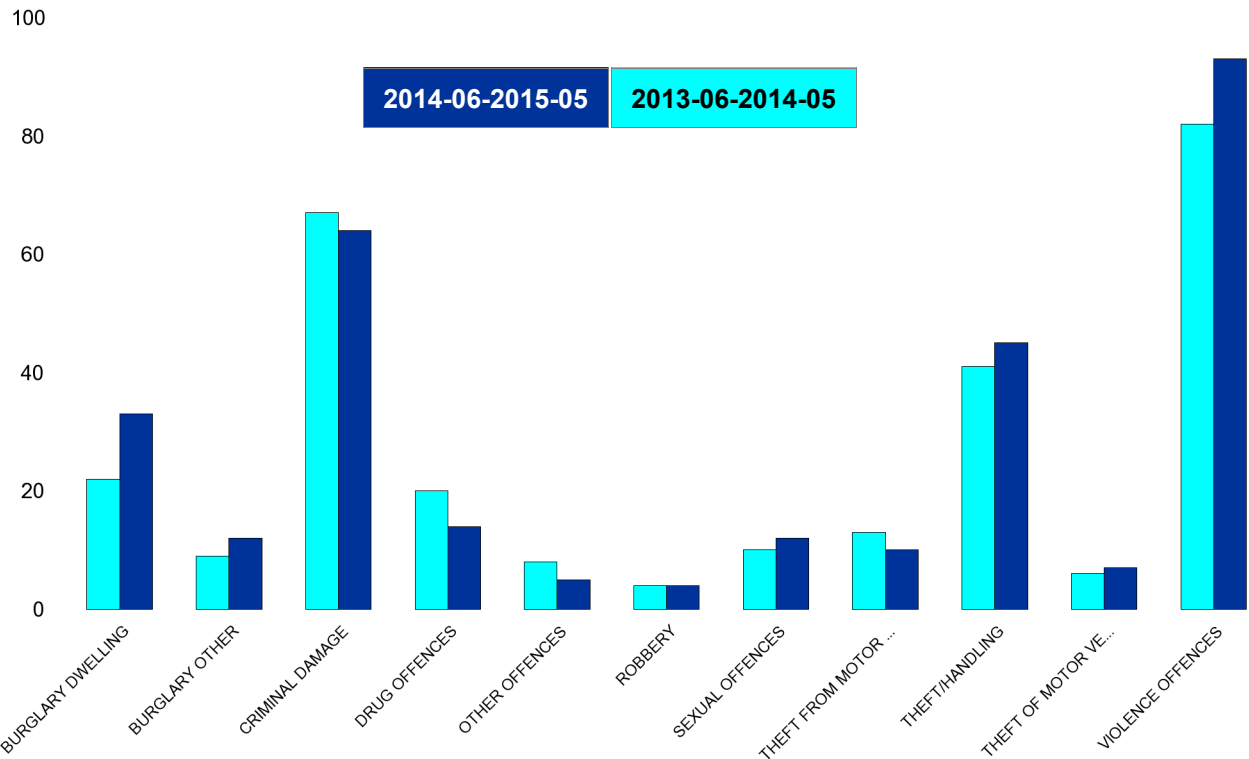
No of Resolved Outcome Crimes	Detection Rate (Past 12 Months)
1	8%
3	10%
19	23%
13	81%
2	25%
3	43%
0	0%
0	0%
45	29%
4	44%
25	25%
<b>115</b>	<b>26%</b>



## Kettering Town Forum Report 2013-06 to 2015-05

### Pipers Hill

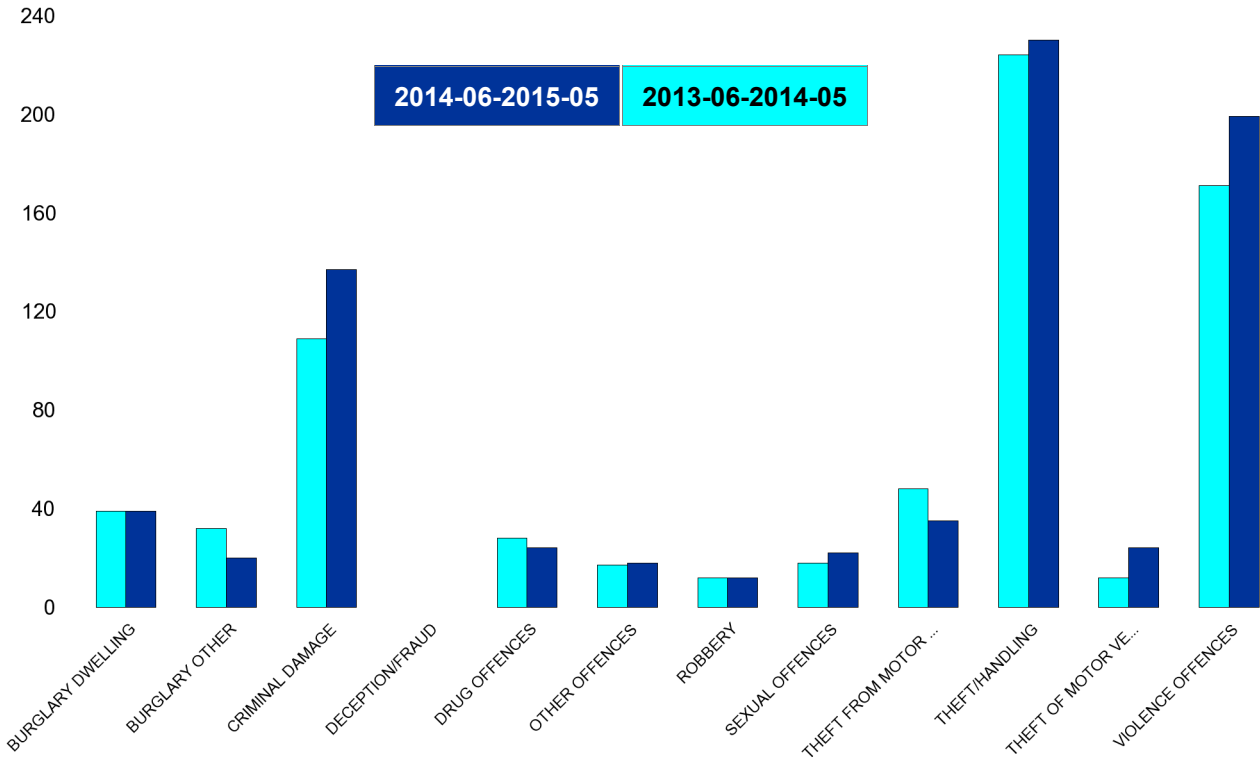
HO Group	No of Crimes Latest 12 Months	No of Crimes Previous 12 Months	+/- Crime	% Change	No of Resolved Outcome Crimes	Detection Rate (Past 12 Months)
BURGLARY DWELLING	33	22	11	50%	3	9%
BURGLARY OTHER	12	9	3	33%	1	8%
CRIMINAL DAMAGE	64	67	-3	-4%	8	13%
DRUG OFFENCES	14	20	-6	-30%	11	79%
OTHER OFFENCES	5	8	-3	-38%	2	40%
ROBBERY	4	4	0	0%	1	25%
SEXUAL OFFENCES	12	10	2	20%	3	25%
THEFT FROM MOTOR VEHICLES	10	13	-3	-23%	0	0%
THEFT/HANDLING	45	41	4	10%	10	22%
THEFT OF MOTOR VEHICLES	7	6	1	17%	0	0%
VIOLENCE OFFENCES	93	82	11	13%	27	29%
<b>Sum:</b>	<b>299</b>	<b>282</b>	<b>17</b>	<b>6%</b>	<b>66</b>	<b>22%</b>



## Kettering Town Forum Report 2013-06 to 2015-05

### St Michaels and Wicksteed

HO Group	No of Crimes Latest 12 Months	No of Crimes Previous 12 Months	+/- Crime	% Change	No of Resolved Outcome Crimes	Detection Rate (Past 12 Months)
BURGLARY DWELLING	39	39	0	0%	3	8%
BURGLARY OTHER	20	32	-12	-38%	2	10%
CRIMINAL DAMAGE	137	109	28	26%	24	18%
DECEPTION/FRAUD	0	0	0	#DIV/0	0	0%
DRUG OFFENCES	24	28	-4	-14%	23	96%
OTHER OFFENCES	18	17	1	6%	9	50%
ROBBERY	12	12	0	0%	2	17%
SEXUAL OFFENCES	22	18	4	22%	4	18%
THEFT FROM MOTOR VEHICLES	35	48	-13	-27%	0	0%
THEFT/HANDLING	230	224	6	3%	61	27%
THEFT OF MOTOR VEHICLES	24	12	12	100%	6	25%
VIOLENCE OFFENCES	199	171	28	16%	64	32%
<b>Sum:</b>	<b>760</b>	<b>710</b>	<b>50</b>	<b>7%</b>	<b>198</b>	<b>26%</b>



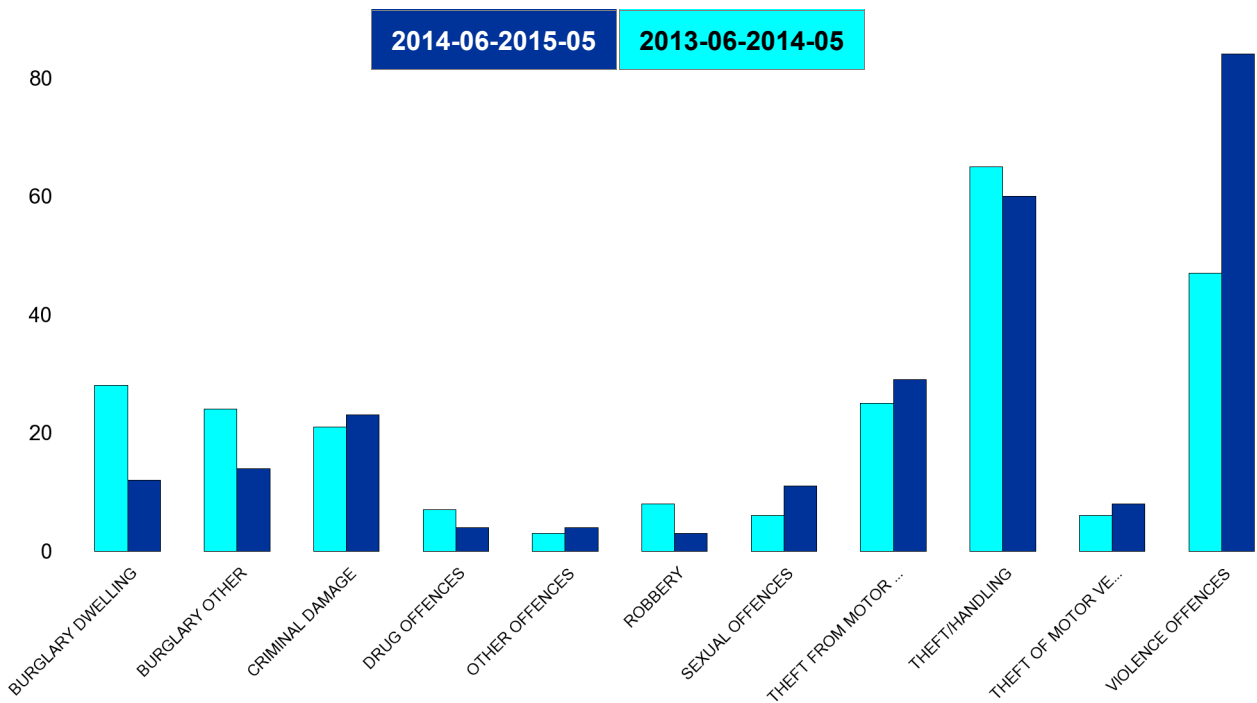


## Kettering Town Forum Report 2013-06 to 2015-05

### St Peters

HO Group	No of Crimes Latest 12 Months	No of Crimes Previous 12 Months	+/- Crime	% Change	No of Resolved Outcome Crimes	Detection Rate (Past 12 Months)
BURGLARY DWELLING	12	28	-16	-57%	2	17%
BURGLARY OTHER	14	24	-10	-42%	1	7%
CRIMINAL DAMAGE	23	21	2	10%	3	13%
DRUG OFFENCES	4	7	-3	-43%	2	50%
OTHER OFFENCES	4	3	1	33%	2	50%
ROBBERY	3	8	-5	-63%	0	0%
SEXUAL OFFENCES	11	6	5	83%	3	27%
THEFT FROM MOTOR VEHICLES	29	25	4	16%	0	0%
THEFT/HANDLING	60	65	-5	-8%	16	27%
THEFT OF MOTOR VEHICLES	8	6	2	33%	1	13%
VIOLENCE OFFENCES	84	47	37	79%	30	36%
<b>Sum:</b>	<b>252</b>	<b>240</b>	<b>12</b>	<b>5%</b>	<b>60</b>	<b>24%</b>

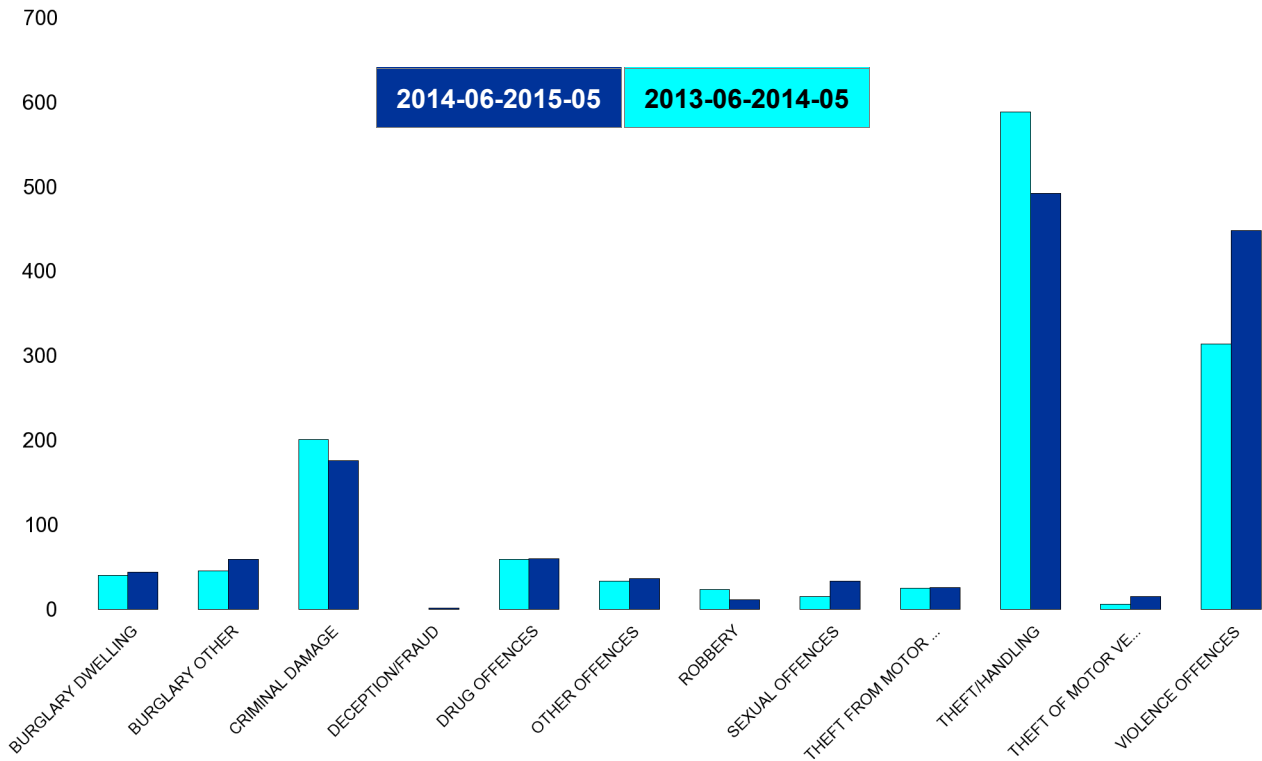
100



## Kettering Town Forum Report 2013-06 to 2015-05

### William Knibb

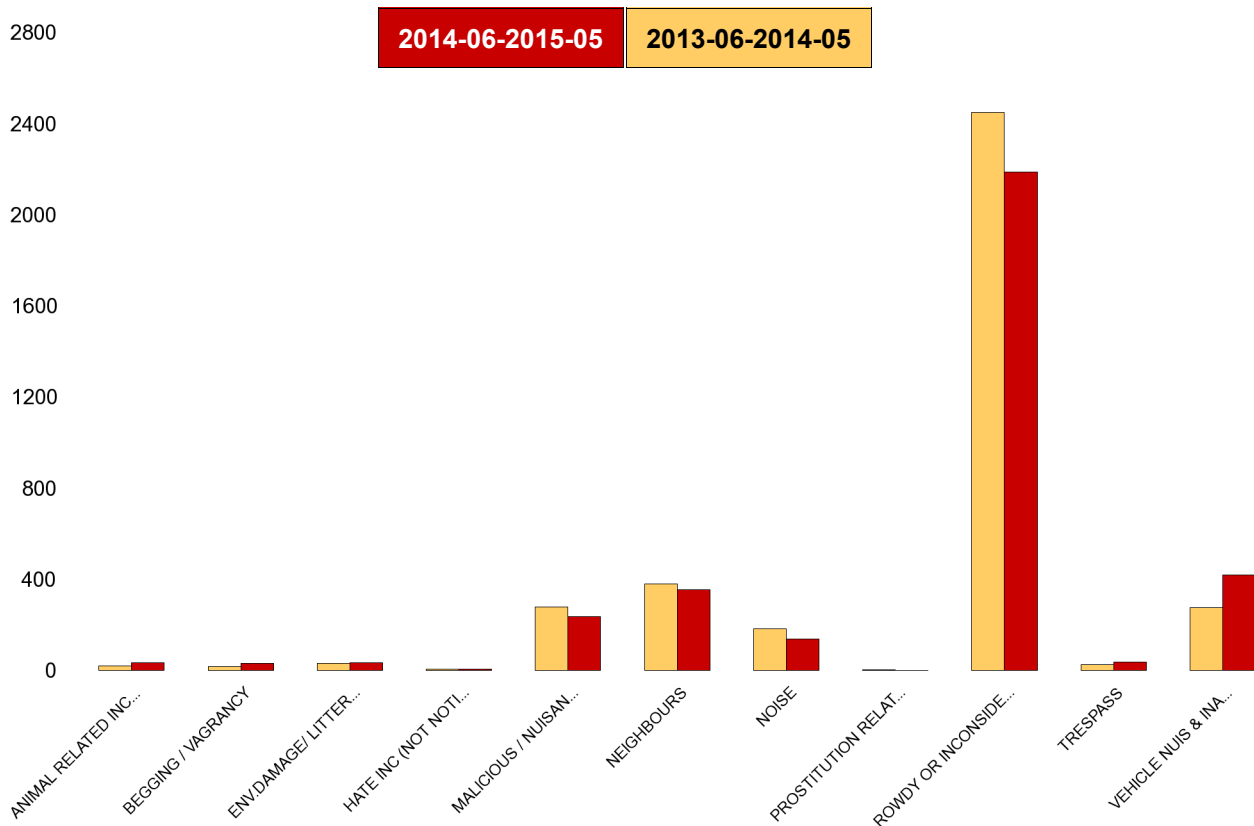
HO Group	No of Crimes Latest 12 Months	No of Crimes Previous 12 Months	+/- Crime	% Change	No of Resolved Outcome Crimes	Detection Rate (Past 12 Months)
BURGLARY DWELLING	44	40	4	10%	5	11%
BURGLARY OTHER	59	45	14	31%	8	14%
CRIMINAL DAMAGE	176	201	-25	-12%	46	26%
DECEPTION/FRAUD	1	0	1	0%	0	0%
DRUG OFFENCES	60	59	1	2%	50	83%
OTHER OFFENCES	36	33	3	9%	24	67%
ROBBERY	11	23	-12	-52%	6	55%
SEXUAL OFFENCES	33	15	18	120%	6	18%
THEFT FROM MOTOR VEHICLES	26	25	1	4%	1	4%
THEFT/HANDLING	492	588	-96	-16%	188	38%
THEFT OF MOTOR VEHICLES	15	6	9	150%	4	27%
VIOLENCE OFFENCES	448	314	134	43%	168	38%
<b>Sum:</b>	<b>1401</b>	<b>1349</b>	<b>52</b>	<b>4%</b>	<b>506</b>	<b>36%</b>



## Kettering Town Forum Report 2013-06 to 2015-05

### Kettering Town SCT - ASB

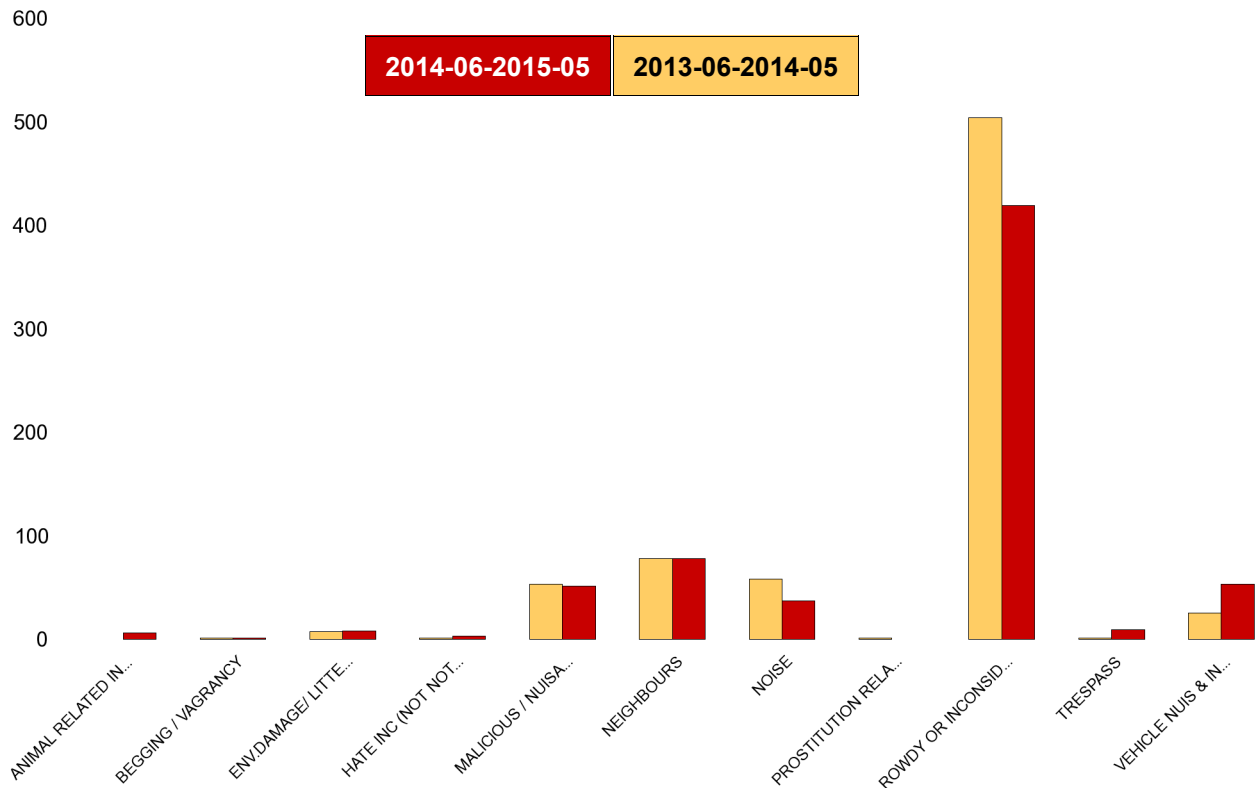
NSIR Closing Cat. 1 Desc	No of Incidents Latest 12 Months	No of Incidents Previous 12 Months	+/- Incidents	% Change Incidents
ANIMAL RELATED INC ANTI-SOCIAL	34	22	12	55%
BEGGING / VAGRANCY	32	17	15	88%
ENV.DAMAGE/ LITTER/ NEEDLES	35	32	3	9%
HATE INC (NOT NOTIFIABLE CRIME	7	8	-1	-13%
MALICIOUS / NUISANCE COMMS	239	281	-42	-15%
NEIGHBOURS	357	381	-24	-6%
NOISE	139	185	-46	-25%
PROSTITUTION RELATED ACTIVITY	1	3	-2	-67%
ROWDY OR INCONSIDERATE BEHAV	2189	2450	-261	-11%
TRESPASS	38	26	12	46%
VEHICLE NUIS & INAPPROP VEH US	421	278	143	51%
<b>Sum:</b>	<b>3492</b>	<b>3683</b>	<b>-191</b>	<b>-5%</b>



## Kettering Town Forum Report 2013-06 to 2015-05

### All Saints

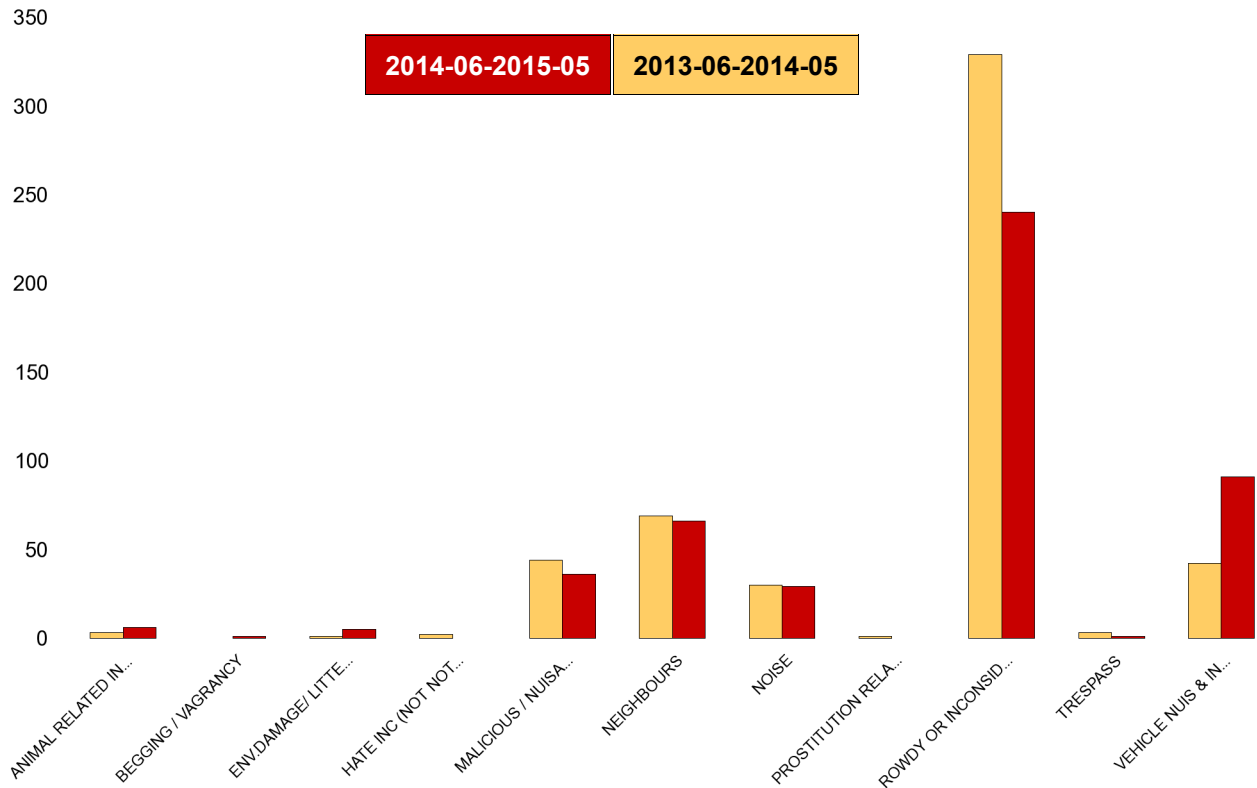
NSIR Closing Cat. 1 Desc	No of Incidents Latest 12 Months	No of Incidents Previous 12 Months	+/- Incidents	% Change Incidents
ANIMAL RELATED INC ANTI-SOCIAL	6	0	6	0%
BEGGING / VAGRANCY	1	1	0	0%
ENV.DAMAGE/ LITTER/ NEEDLES	8	7	1	14%
HATE INC (NOT NOTIFIABLE CRIME	3	1	2	200%
MALICIOUS / NUISANCE COMMS	51	53	-2	-4%
NEIGHBOURS	78	78	0	0%
NOISE	37	58	-21	-36%
PROSTITUTION RELATED ACTIVITY	0	1	-1	-100%
ROWDY OR INCONSIDERATE BEHAV	419	504	-85	-17%
TRESPASS	9	1	8	800%
VEHICLE NUIS & INAPPROP VEH US	53	25	28	112%
<b>Sum:</b>	<b>665</b>	<b>729</b>	<b>-64</b>	<b>-9%</b>



## Kettering Town Forum Report 2013-06 to 2015-05

### Avondale Grange

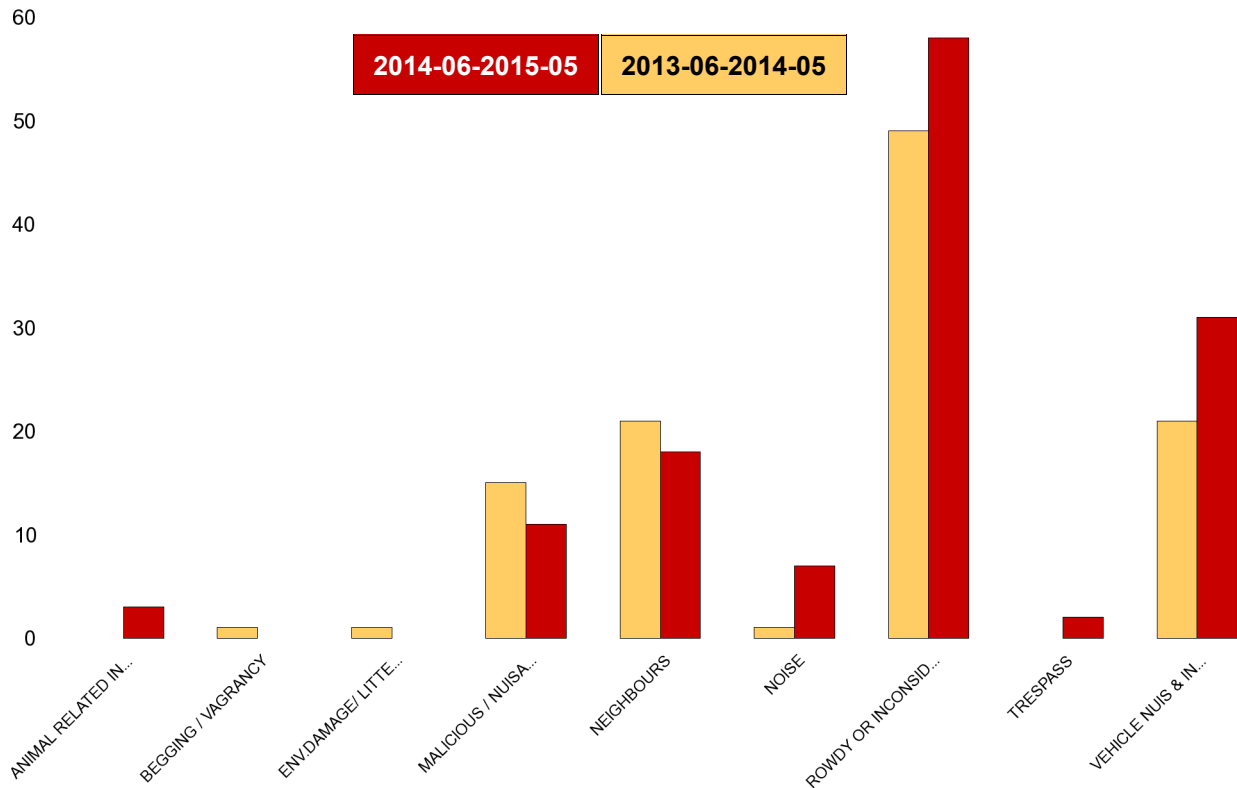
NSIR Closing Cat. 1 Desc	No of Incidents Latest 12 Months	No of Incidents Previous 12 Months	+/- Incidents	% Change Incidents
ANIMAL RELATED INC ANTI-SOCIAL	6	3	3	100%
BEGGING / VAGRANCY	1	0	1	0%
ENV.DAMAGE/ LITTER/ NEEDLES	5	1	4	400%
HATE INC (NOT NOTIFIABLE CRIME	0	2	-2	-100%
MALICIOUS / NUISANCE COMMS	36	44	-8	-18%
NEIGHBOURS	66	69	-3	-4%
NOISE	29	30	-1	-3%
PROSTITUTION RELATED ACTIVITY	0	1	-1	-100%
ROWDY OR INCONSIDERATE BEHAV	240	329	-89	-27%
TRESPASS	1	3	-2	-67%
VEHICLE NUIS & INAPPROP VEH US	91	42	49	117%
<b>Sum:</b>	<b>475</b>	<b>524</b>	<b>-49</b>	<b>-9%</b>



## Kettering Town Forum Report 2013-06 to 2015-05

### Brambleside

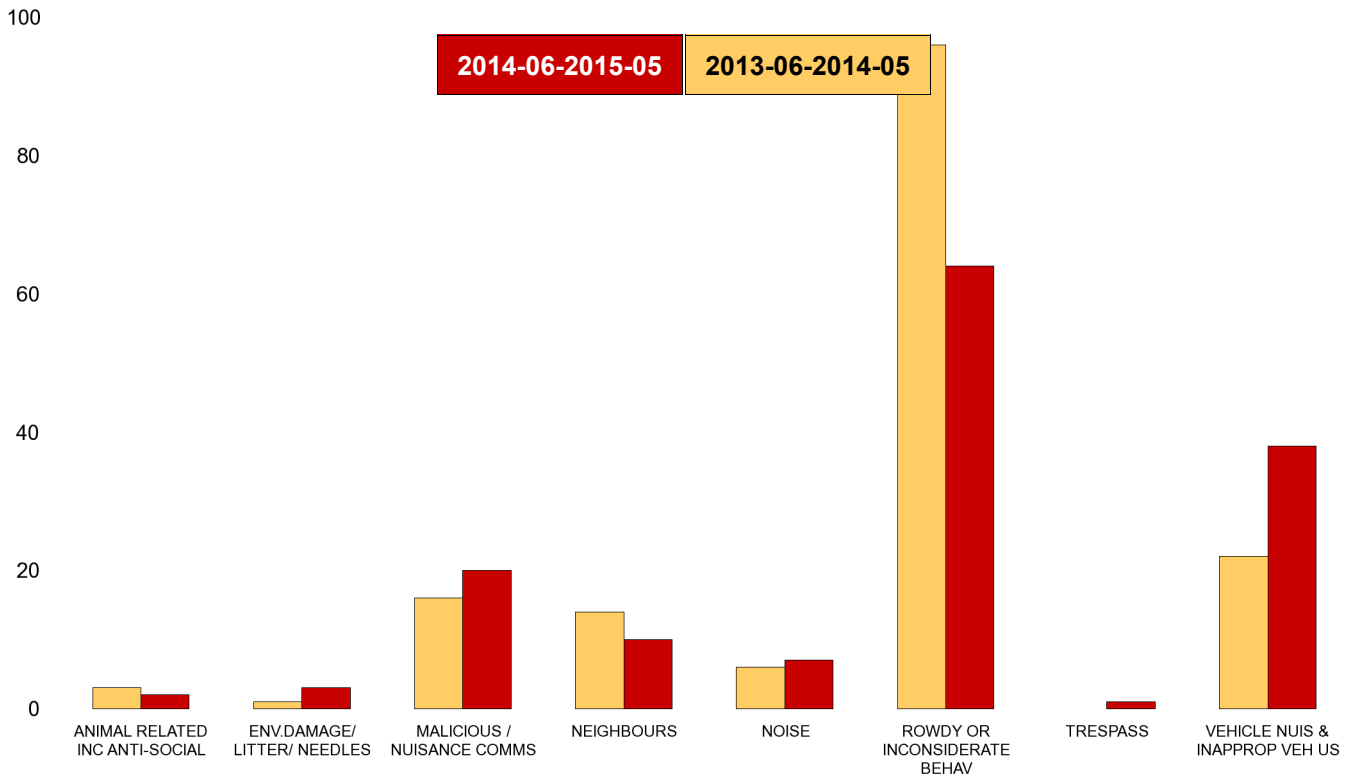
NSIR Closing Cat. 1 Desc	No of Incidents Latest 12 Months	No of Incidents Previous 12 Months	+/- Incidents	% Change Incidents
ANIMAL RELATED INC ANTI-SOCIAL	3	0	3	0%
BEGGING / VAGRANCY	0	1	-1	-100%
ENV.DAMAGE/ LITTER/ NEEDLES	0	1	-1	-100%
MALICIOUS / NUISANCE COMMS	11	15	-4	-27%
NEIGHBOURS	18	21	-3	-14%
NOISE	7	1	6	600%
ROWDY OR INCONSIDERATE BEHAV	58	49	9	18%
TRESPASS	2	0	2	0%
VEHICLE NUIS & INAPPROP VEH US	31	21	10	48%
<b>Sum:</b>	<b>130</b>	<b>109</b>	<b>21</b>	<b>19%</b>



## Kettering Town Forum Report 2013-06 to 2015-05

### Ise Lodge

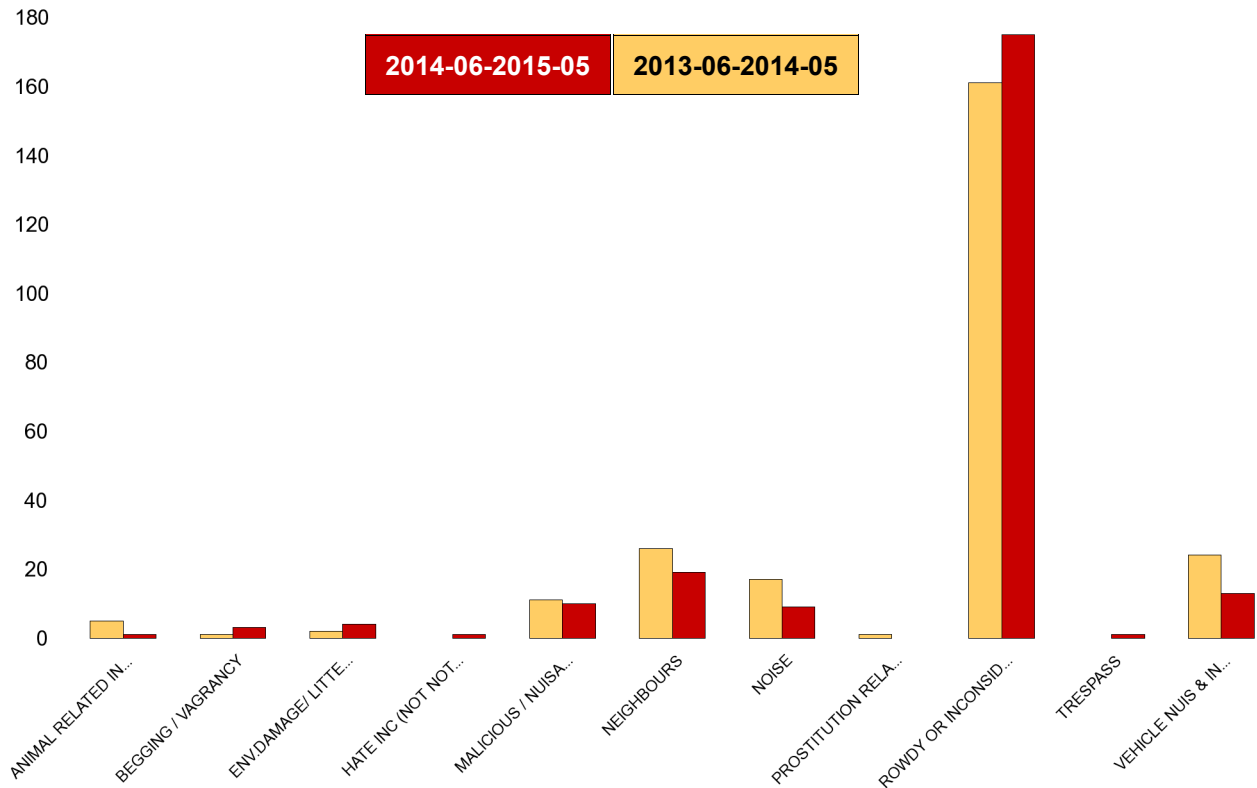
NSIR Closing Cat. 1 Desc	No of Incidents Latest 12 Months	No of Incidents Previous 12 Months	+/- Incidents	% Change Incidents
ANIMAL RELATED INC ANTI-SOCIAL	2	3	-1	-33%
ENV.DAMAGE/ LITTER/ NEEDLES	3	1	2	200%
MALICIOUS / NUISANCE COMMS	20	16	4	25%
NEIGHBOURS	10	14	-4	-29%
NOISE	7	6	1	17%
ROWDY OR INCONSIDERATE BEHAV	64	96	-32	-33%
TRESPASS	1	0	1	0%
VEHICLE NUIS & INAPPROP VEH US	38	22	16	73%
<b>Sum:</b>	<b>145</b>	<b>158</b>	<b>-13</b>	<b>-8%</b>



## Kettering Town Forum Report 2013-06 to 2015-05

### Northfield

NSIR Closing Cat. 1 Desc	No of Incidents Latest 12 Months	No of Incidents Previous 12 Months	+/- Incidents	% Change Incidents
ANIMAL RELATED INC ANTI-SOCIAL	1	5	-4	-80%
BEGGING / VAGRANCY	3	1	2	200%
ENV.DAMAGE/ LITTER/ NEEDLES	4	2	2	100%
HATE INC (NOT NOTIFIABLE CRIME	1	0	1	0%
MALICIOUS / NUISANCE COMMS	10	11	-1	-9%
NEIGHBOURS	19	26	-7	-27%
NOISE	9	17	-8	-47%
PROSTITUTION RELATED ACTIVITY	0	1	-1	-100%
ROWDY OR INCONSIDERATE BEHAV	175	161	14	9%
TRESPASS	1	0	1	0%
VEHICLE NUIS & INAPPROP VEH US	13	24	-11	-46%
<b>Sum:</b>	<b>236</b>	<b>248</b>	<b>-12</b>	<b>-5%</b>

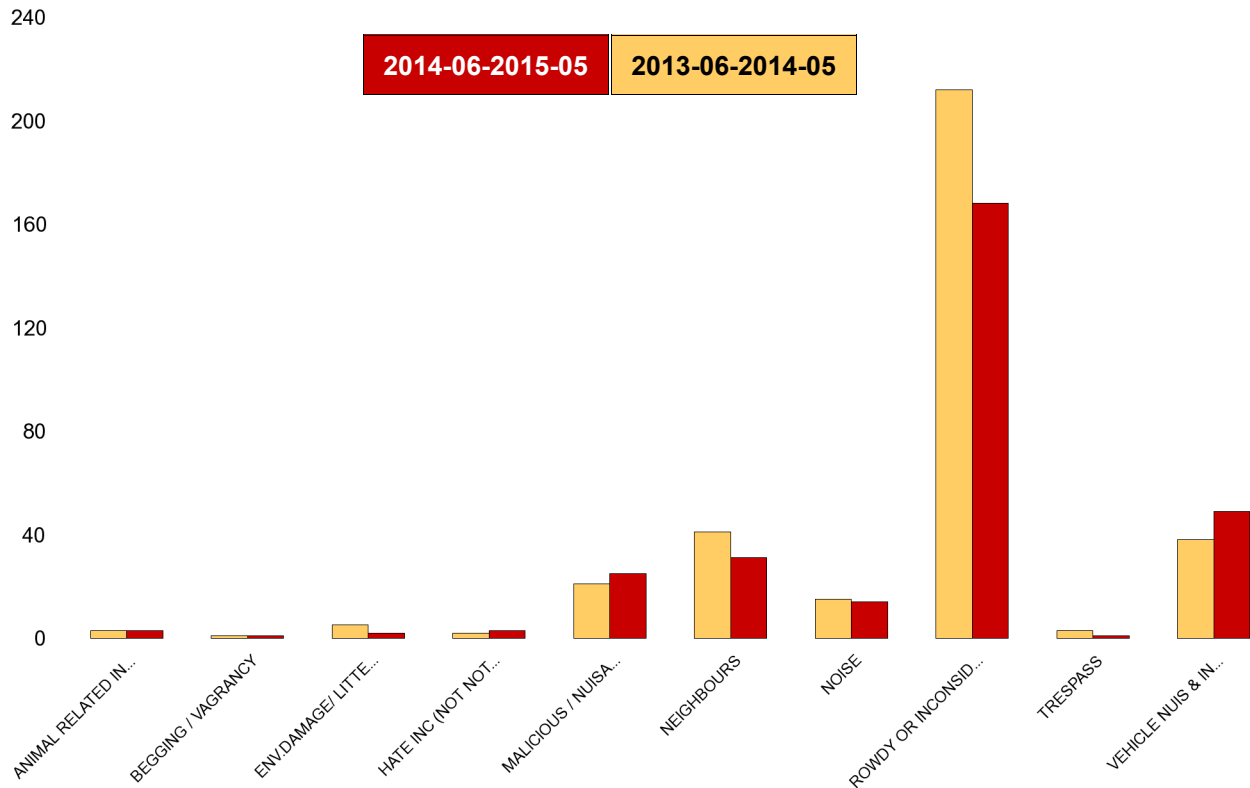




## Kettering Town Forum Report 2013-06 to 2015-05

### Pipers Hill

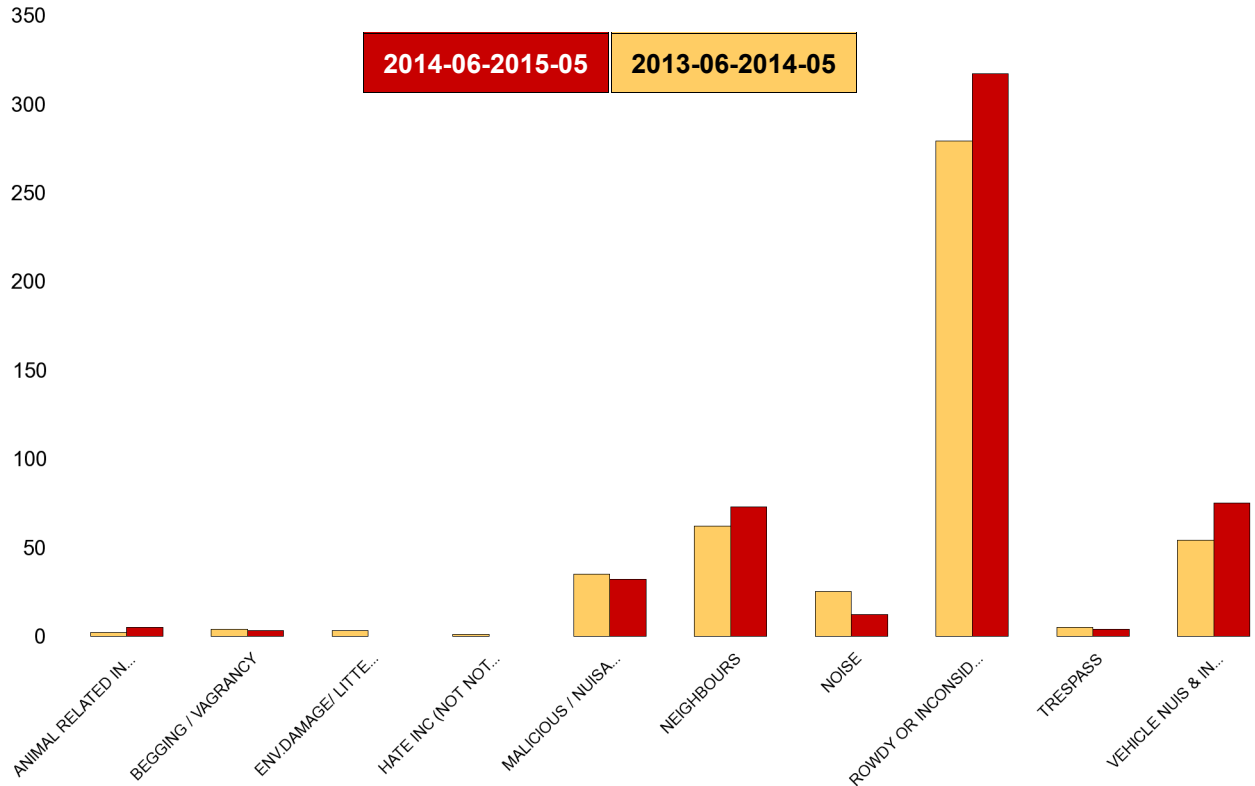
NSIR Closing Cat. 1 Desc	No of Incidents Latest 12 Months	No of Incidents Previous 12 Months	+/- Incidents	% Change Incidents
ANIMAL RELATED INC ANTI-SOCIAL	3	3	0	0%
BEGGING / VAGRANCY	1	1	0	0%
ENV.DAMAGE/ LITTER/ NEEDLES	2	5	-3	-60%
HATE INC (NOT NOTIFIABLE CRIME	3	2	1	50%
MALICIOUS / NUISANCE COMMS	25	21	4	19%
NEIGHBOURS	31	41	-10	-24%
NOISE	14	15	-1	-7%
ROWDY OR INCONSIDERATE BEHAV	168	212	-44	-21%
TRESPASS	1	3	-2	-67%
VEHICLE NUIS & INAPPROP VEH US	49	38	11	29%
<b>Sum:</b>	<b>297</b>	<b>341</b>	<b>-44</b>	<b>-13%</b>



## Kettering Town Forum Report 2013-06 to 2015-05

### St Michaels and Wickstead

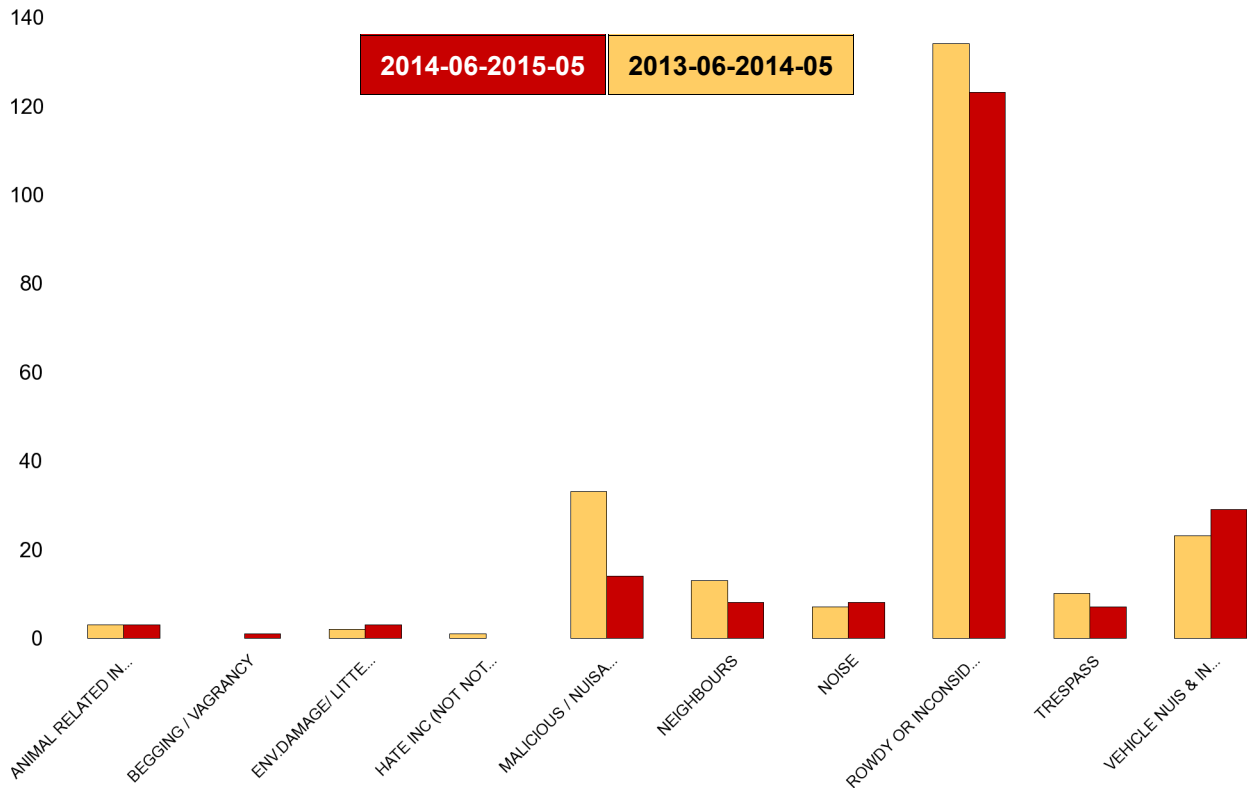
NSIR Closing Cat. 1 Desc	No of Incidents Latest 12 Months	No of Incidents Previous 12 Months	+/- Incidents	% Change Incidents
ANIMAL RELATED INC ANTI-SOCIAL	5	2	3	150%
BEGGING / VAGRANCY	3	4	-1	-25%
ENV.DAMAGE/ LITTER/ NEEDLES	0	3	-3	-100%
HATE INC (NOT NOTIFIABLE CRIME	0	1	-1	-100%
MALICIOUS / NUISANCE COMMS	32	35	-3	-9%
NEIGHBOURS	73	62	11	18%
NOISE	12	25	-13	-52%
ROWDY OR INCONSIDERATE BEHAV	317	279	38	14%
TRESPASS	4	5	-1	-20%
VEHICLE NUIS & INAPPROP VEH US	75	54	21	39%
<b>Sum:</b>	<b>521</b>	<b>470</b>	<b>51</b>	<b>11%</b>



## Kettering Town Forum Report 2013-06 to 2015-05

### St Peters

NSIR Closing Cat. 1 Desc	No of Incidents Latest 12 Months	No of Incidents Previous 12 Months	+/- Incidents	% Change Incidents
ANIMAL RELATED INC ANTI-SOCIAL	3	3	0	0%
BEGGING / VAGRANCY	1	0	1	0%
ENV.DAMAGE/ LITTER/ NEEDLES	3	2	1	50%
HATE INC (NOT NOTIFIABLE CRIME	0	1	-1	-100%
MALICIOUS / NUISANCE COMMS	14	33	-19	-58%
NEIGHBOURS	8	13	-5	-38%
NOISE	8	7	1	14%
ROWDY OR INCONSIDERATE BEHAV	123	134	-11	-8%
TRESPASS	7	10	-3	-30%
VEHICLE NUIS & INAPPROP VEH US	29	23	6	26%
<b>Sum:</b>	<b>196</b>	<b>226</b>	<b>-30</b>	<b>-13%</b>



## Kettering Town Forum Report 2013-06 to 2015-05

### William Knibb

NSIR Closing Cat. 1 Desc	No of Incidents Latest 12 Months	No of Incidents Previous 12 Months	+/- Incidents	% Change Incidents
ANIMAL RELATED INC ANTI-SOCIAL	5	3	2	67%
BEGGING / VAGRANCY	22	9	13	144%
ENV.DAMAGE/ LITTER/ NEEDLES	10	10	0	0%
HATE INC (NOT NOTIFIABLE CRIME	0	1	-1	-100%
MALICIOUS / NUISANCE COMMS	40	53	-13	-25%
NEIGHBOURS	54	57	-3	-5%
NOISE	16	26	-10	-38%
PROSTITUTION RELATED ACTIVITY	1	0	1	0%
ROWDY OR INCONSIDERATE BEHAV	625	686	-61	-9%
TRESPASS	12	4	8	200%
VEHICLE NUIS & INAPPROP VEH US	42	29	13	45%
<b>Sum:</b>	<b>827</b>	<b>878</b>	<b>-51</b>	<b>-6%</b>

